

LAUREN BENTLEY

SWIMWEAR

LOOKBOOK | CORE COLLECTION



INTRODUCTION

Focusing on elevated, timeless silhouettes, Lauren Bentley Swimwear collections represent craftsmanship without distractions. Men and women are offered swimwear that is equally as luxurious as it is thoughtful.

Our products draw inspiration from two main sources; the timeless art of fashion and the serenity of nature. The result is masterfully crafted garments that can be worn with ease.

We are dedicated to designing swimwear that stands the test of time, in both quality and style, rather than becoming obsolete with the changing seasons. For this reason, every detail is purposeful, ensuring finished products that will keep our customers satisfied summer-to-summer.

WOMEN'S COLLECTION



OVERVIEW

Made up of nine pieces, our women's collection offers three one-pieces, three tops, and three bottoms. Our fabric can be described as a second skin, truly enhancing the female figure. Lastly, four solid colorways bring our designs to life, while complementing all skintones.

In the pages that follow, you will be introduced to our leading women's collection. Created to inspire women to build the foundation of their swimwear wardrobe with garments that last the test of time.

GARDEN ROSE



SMOKED PAPRIKA



DEEP OCEAN



BLACK







SCOOP NECK MAILLOT

Our Scoop Neck Maillot was designed with every woman in mind. It features fine straps and a gentle scooping neckline that perfectly frames the décolletage. Complete with our classic-fit lower, this one piece is the beating heart of timeless elegance.

Size Scale: 38 - 48 (IT)

Colors: All collection colors (solid)



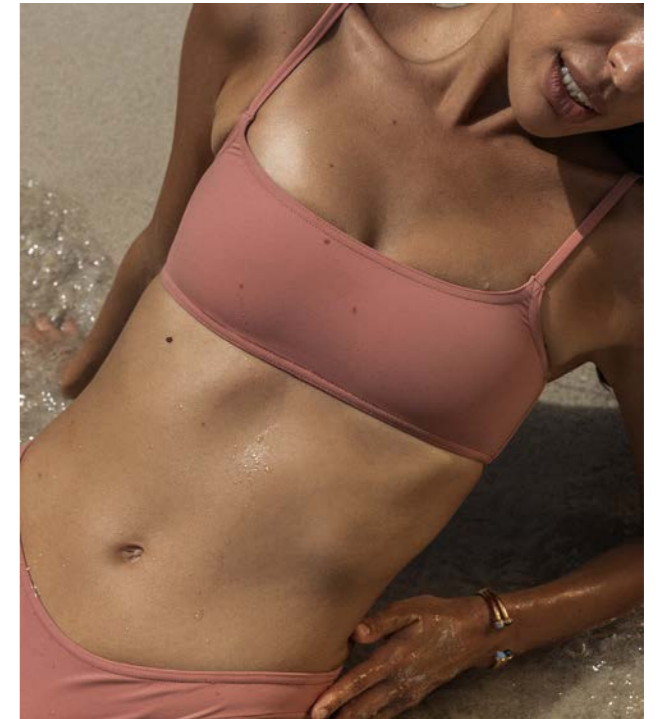


SCOOP NECK TOP + CLASSIC FIT BOTTOMS



Our Scoop Neck Top was designed to seamlessly merge functionality and beauty. Featuring fine straps, a gentle scooping neckline that perfectly frames the décolletage, and the right amount of coverage. This style has an effortless chicness, making it a true staple.

Size Scale: 38 - 48 (IT)
Colors: All collection colors (solid)



A modern take on the traditional hipster, our Classic Fit Bottoms naturally fall slightly higher on the hip for the most flattering fit. This style was designed to be your most worn bottom. With just the right amount of coverage, it is truly versatile.

Size Scale: 38 - 48 (IT)
Colors: All collection colors (solid)



CAP SLEEVE MAILLOT

Our Cap Sleeve Maillot is elegance in its purest form. Designed to evoke confidence, this one piece swimsuit gives a gentle embrace, exquisitely framing the décolletage. Its sophisticated strapless neckline and sleek body meets up with our classic fit lower for an unparalleled silhouette.

Size Scale: 38 - 48 (IT)

Colors: All collection colors (solid)





CAP SLEEVE TOP + HIGH RISE BOTTOMS



Our Cap Sleeve Top is elegance in its purest form. Designed to evoke confidence, this top gives a gentle embrace, exquisitely framing the décolletage. The sophisticated bandeau-style neckline is cut with beauty and comfort in mind.

Size Scale: 38 - 48 (IT)
Colors: All collection colors (solid)



Our High-Rise Bottoms were designed to evoke confidence. The waistline of this flattering silhouette falls right along the navel. Designed with our classic-fit coverage, this bottom has a timeless elegance that will transport you to the French Riviera in the 60s.

Size Scale: 38 - 48 (IT)
Colors: All collection colors (solid)

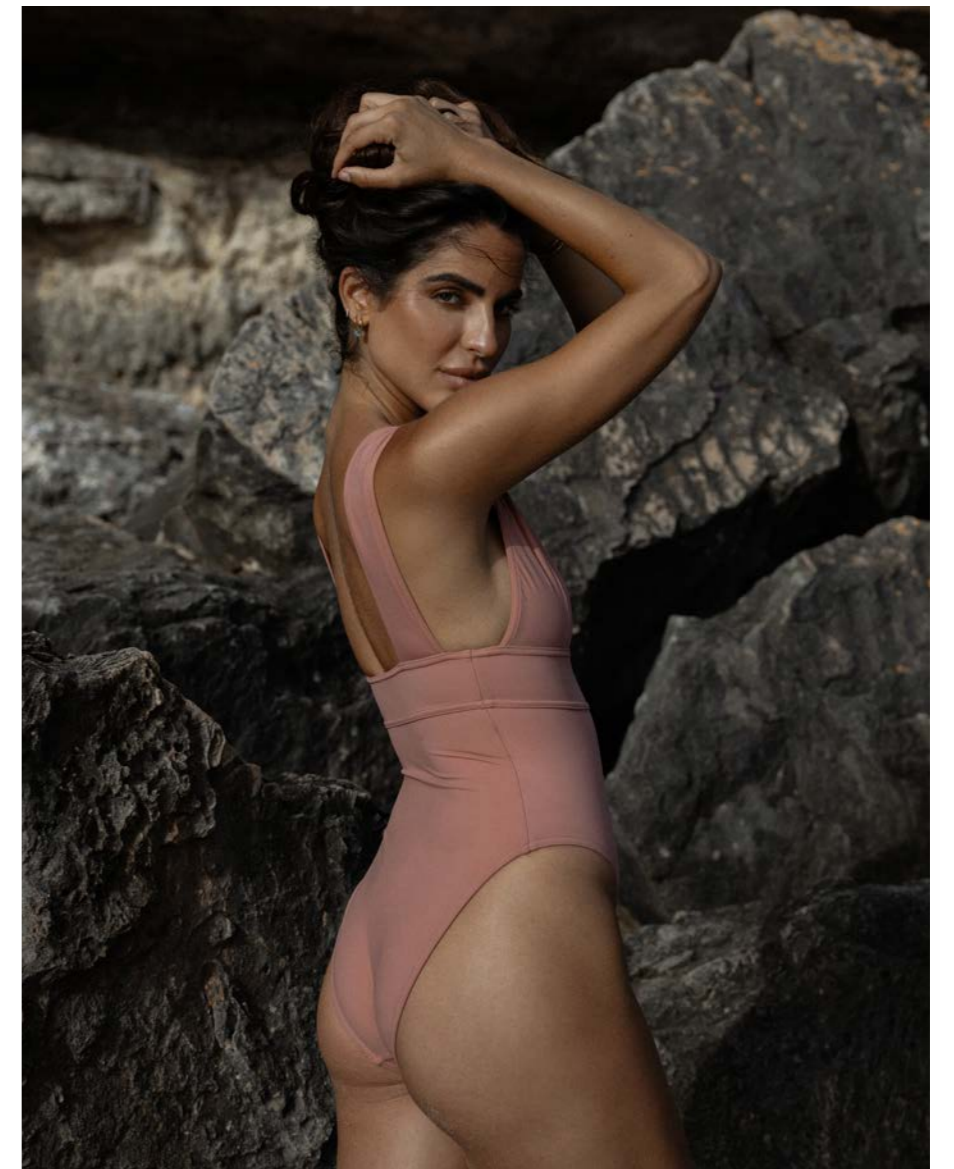


V NECK MAILLOT

Our V Neck Maillot exudes timelessness and sophistication. Featuring statement straps, angular cups, and a supportive band, this one piece suit was designed to be equally elegant and effective. The wide underbust band offers superior support, while enhancing your feminine figure. Finally, the body is complete with our classic-fit lower.

Size Scale: 38 - 48 (IT)

Colors: All collection colors (solid)



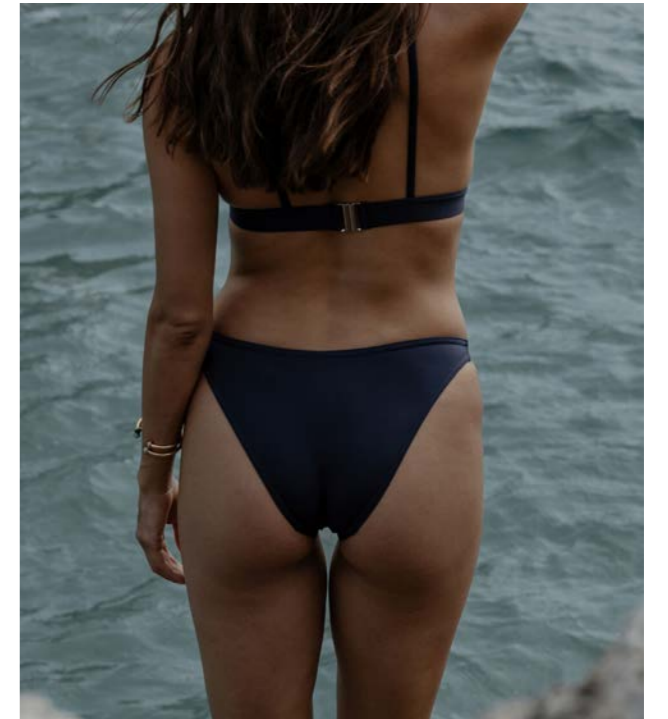


TRIANGLE TOP + NARROW FIT BOTTOMS



Our Triangle Top is a sophisticated twist on a classic. Featuring fine straps and triangular cups, this suit has a sleek and refined silhouette. The 1 1/4" underbust band offers ample support, while our soft-close fastener ensures you stay secure.

Size Scale: 38 - 48 (IT)
Colors: All collection colors (solid)



For those that prefer minimal tan lines, this bottom is the perfect beach bag companion. This style offers slimmer coverage, while maintaining the perfected fit of our Classic Fit Bottom. It naturally falls slightly higher on the hip for a flattering, modern silhouette.

Size Scale: 38 - 48 (IT)
Colors: All collection colors (solid)



OVERVIEW

MEN'S COLLECTION

Offering two classic designs in two colorways, as well as two inseam lengths, our men's collection represents tailoring at its finest. The garments feature a smooth, quick-drying fabric and top quality hardware. Inseam length options are 4.5" and 6.5".

In the pages that follow, you will be introduced to our leading men's collection. Masterfully constructed to fit the male physique, our intention is to provide men with durability and longevity in their swimwear, while looking sophisticated.

DEEP OCEAN



BLACK







CLASSIC TAILORED TRUNK

Swimming trunks don't get more sophisticated than this. Designed with reference to traditional men's tailoring, no detail has been overlooked. Featuring an adjustable waistband, darting, and refined hardware, this garment is a true representation of craftsmanship.

Size Scale: 44 - 54 (IT)

Inseams: 4.5", 6.5"

Colors: Deep Ocean, Black





Our Classic Drawstring trunks are the ultimate effortless yet polished swimsuit for men. The elastic waistband provides a comfortable fit, while the drawstring allows for further adjustment. Hardware is matte black for a sleek look, complete with zippered side-seam pockets to hold personal items securely.

Size Scale: 44 - 54 (IT)
Inseams: 4.5", 6.5"
Colors: Deep Ocean, Black



CLASSIC DRAWSTRING TRUNKS



Taking inspiration from the timeless swimwear spotted along the Mediterranean coastline throughout history, our pieces intertwine a vision of classic romance and the modern experience.



WWW.LAURENBENTLEYSWIM.COM

CONTACT:
INFO@LAURENBENTLEYSWIM.COM

