

# Natural Timber Characteristics

Whilst we try to ensure that our timber products reach you in perfect condition, we have to remember we are dealing with a natural material and there are many characteristics which can arise.

These are completely normal and have no detrimental effect on the product. We also manufacture our products so that most natural defects are inside the product where you will not see them. Or the plank may be reversible, so it can be used either way around.



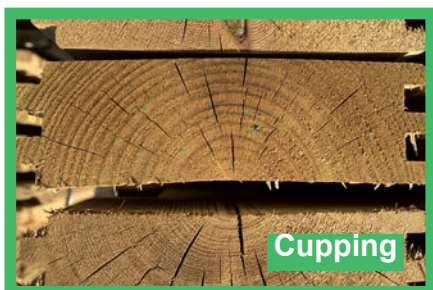
**Shake** appears like a series of splits. With a timber section of this size you will always encounter some degree of this (usually on one side). This does not affect the strength of the product and you will find the shake opens in continued warm weather and then closes up when the weather is wet and cooler or there is a lot of moisture in the air.



**Pith** is similar to the above defect and quite often found along side each other. Most of this is typically machined to be on the inside of the product.



**Knots** are typically found in timber as shown. These are not generally an issue and can actually be beneficial relieving stress points in timber. In many peoples opinion these add character to the products.



**Cupping** is mainly caused by the treatment of the timber. Where timber is kiln dried and then pressure treated it can cause cupping. Although we do limit this, the best way for you to counteract is, as you build the walls of your product, have one plank with the growth rings facing one way and the next with the rings facing the opposite way (counter cupping). This is only possible on square or rectangular products as the planks are reversible. On octagonal products if you have a problematic plank try it in another wall position to see where it will fit best.

