

Layzee Living



[www.layzeeliving.co.uk](http://www.layzeeliving.co.uk)

# Timber Products, Ponds & Accessories Assembly Instructions

# Introduction

Congratulations on your new purchase! We hope it provides you with many years of happiness in the garden.

This product has been treated with ACQ, which is child friendly and warrantied against rot and insect attack (10 year warranty on 44mm wood).

Please remember timber is a natural product and can be prone to expanding, shrinking and natural defects. Please see page 4 for more information.

After receiving your timber product we advise that you unpack and assemble it at the earliest opportunity.

Wood is a living material and once cut the appearance of cracks, slight movements or changes in colour are normal and the planks (except in extreme circumstances) do not need replacing. The planks will have been recently treated and may be delivered to you still moist. In the event of a rapid change in temperature these planks can dry very quickly and lose 1mm or 2mm of height. This might give the impression that they are lifting up however they are actually shrinking.

This product is heavy and some components may require two persons to lift.

At every point of manufacturing this product, care has been taken to provide quality and satisfaction to our customers. If any part of this kit is missing or damaged you must contact us before proceeding with assembly of this product.

# Natural Timber Characteristics

Whilst we try to ensure that our timber products reach you in perfect condition, we have to remember we are dealing with a natural material and there are many characteristics which can arise.

These are completely normal and have no detrimental effect on the product. We also manufacture our products so that most natural defects are inside the product where you will not see them. Or the plank may be reversible, so it can be used either way around.



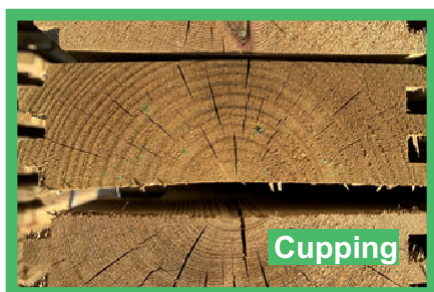
**Shake** appears like a series of splits. With a timber section of this size, you will always encounter some degree of this (usually on one side). This does not affect the strength of the product and you will find the shake opens in continued warm weather and then closes up when the weather is wet and cooler or there is a lot of moisture in the air.



**Pith** is similar to the above defect and quite often found alongside each other. Most of this is typically machined to be on the inside of the product.



**Knots** are typically found in timber as shown. These are not generally an issue and can actually be beneficial relieving stress points in timber. In many people's opinion these add character to the products.



**Cupping** is mainly caused by the treatment of the timber. Where timber is kiln dried and then pressure treated it can cause cupping. Although we do limit this, the best way for you to counteract is, as you build the walls of your product, have one plank with the growth rings facing one way and the next with the rings facing the opposite way (counter cupping). This is only possible on square or rectangular products as the planks are reversible. On octagonal products if you have a problematic plank try it in another wall position to see where it will fit best.



# Recommendations for Storage and Delivery

**Please take time to read these instructions prior to installing your product. This will help you understand the product and prevent mistakes being made.**

In the pre-assembly period, the wood is sensitive to variations in temperature and humidity. It is therefore necessary that you take the following precautions immediately after delivery.

Wood is a living material and once cut the appearance of cracks, slight movements or changes in colour are normal and the planks (except in extreme circumstances) do not need replacing.

The planks will have been recently treated and may be delivered to you still moist. In case of a rapid change in temperature these planks can dry very rapidly and lose 1 or 2mm of height. This might give you the impression that they are lifting up while they are actually shrinking. Whilst in cooler wet conditions the wood may expand back to its original size. This is completely normal.

- Do not store the wood in direct sunlight or under a black cover as this will cause distortion which will make installation extremely difficult.
- Assemble the structure as soon as possible after receipt.
- Assemble the structure in one go, preferably in the morning while the temperature is cool.
- If the product must be stored then use a cool well-ventilated place, sheltered from sun and rain.
- Components that are damaged, cracked or distorted due to bad storage and/or handling on site are not covered by warranty.

## Kit Contents

As you unpack your product make sure that you have all parts required and that their condition is satisfactory.

Contact us straightaway if you believe parts are missing or damaged.

## Safety Precautions

Use safety goggles during installation to reduce risk of eye injury.  
Gloves should be worn to protect fingers.

At every point of manufacturing this product, care has been taken to provide quality and satisfaction to our customers. If any part of this kit is missing or damaged then you must contact our support team on **02078673959** before proceeding with assembly of this product.



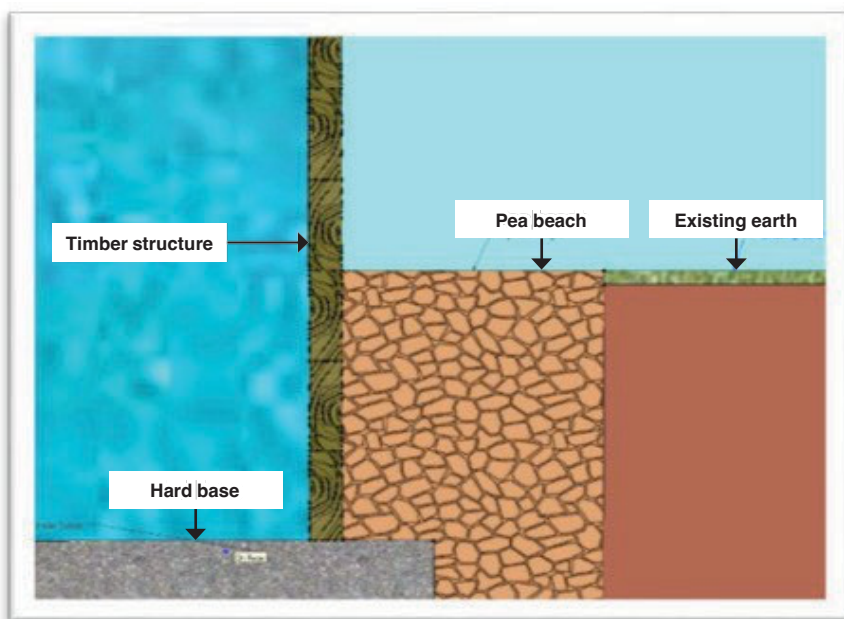
### **RISK OF DROWNING**

**Never leave children unattended around the pond when completed or at any stage of construction.**

# Total or Partial in-ground installation

These timber products can be installed above ground, partially in or fully in ground. However, if you do have your product fully or partially in ground you will need to ensure that there is adequate drainage so that the timbers are not to be permanently submerged in water. Use an adequate amount of pea beach around the structure if possible, with a run off to a soak away or similar, so that water cannot build up around the structure and rot the timbers. If an adequate amount of drainage in the form of pea shingle or similar has not been used, this may affect the warranty.

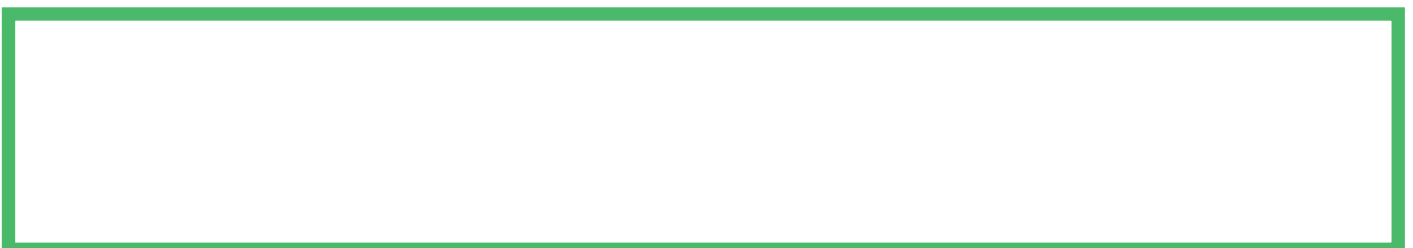
This product has been treated with ACQ which is child play friendly and is warranted against rot and insect attack (10 years on 44mm wood and 5 years on 27mm wood).



However, if this product is being installed completely or partially below ground level, you will need to install adequate drainage around the product. We recommend 300- 450mm width of pea shingle, all the way around the product. Never use a plastic membrane around the outside of product as this will accelerate any deterioration of a timber product.

The timbers are treated for ground contact only and are not to be submerged permanently

in water. Please also note that any modification to a wooden structure including drilling or cutting of a wall plank will void the warranty on any plank which is affected. As a precaution if you do require to modify a plank, we suggest that you treat the cut area with a good quality timber preservative if below ground level. Ensure any treatment does not come into contact with the liner.



# Preparation of the Base

## OPTION I: Subsoil Base

- Although the recommended base is concrete (see Option II below) you may choose to construct your pool on undisturbed ground. You must satisfy your-self that your site conditions are suitable. If your site is wet and prone to ground water or flooding then use a concrete base.
- Never construct your pool on made up ground, always dig down to undisturbed soil.
- Clear an area at least the size of the pond.
- Ensure that the cleared area is flat, level and smooth and that all vegetation has been removed.
- Ensure that all stones, sharp objects and roots are removed. Failure to prepare the ground may result in a damaged liner. Any damage caused to the liner (other than manufacturing defect) is excluded from any warranty.



## OPTION II: Concrete Base

- The recommended minimum base is a 100mm (4") thick concrete pad. Using a steel reinforcing grid in the concrete will greatly increase its strength and is recommended. Every site is different so give due consideration to increasing this specification if you have unstable ground or any other concerns. If in doubt seek the advice of a Ground Working Contractor or a Civil Engineer.
- Never construct your pond on made up ground, always dig down to undisturbed subsoil.
- The minimum size concrete base needs to be approximately 300mm larger than the outside dimension of the pond walls.
- Ensure that your finished concrete is absolutely level over the whole pond area. If your base is not level the water level will show this after filling.
- Ensure that your finished concrete is completely flat over the whole pond area.
- Ensure that your finished concrete is absolutely smooth. Rough concrete can damage the pond liner.
- Allow your concrete to cure before assembling your pool.

# Square Ponds and Rectangular Ponds Assembly Instructions



1

Bottom half plank



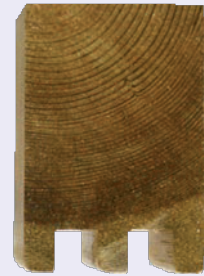
Standard plank



Top full plank

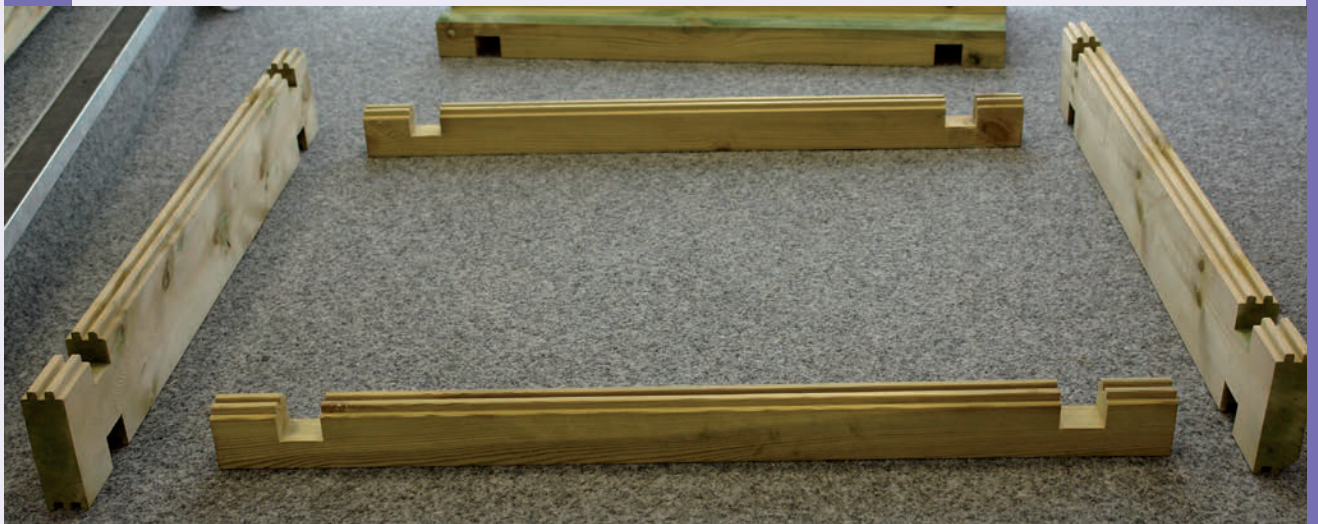


Top half plank



- Note the four different profiles used for building the structure walls.

2



- Lay out the “bottom half planks” (a narrow timber with a flat bottom and tongues on top).



3



- Then using “standard planks” (a wide timber with tongues and grooves) interlock the timbers using the cut-out notches.
- You should now have the correct shape and base of your walls set out.

4



- Add the next layer of “standard planks” as demonstrated above. Make sure each plank locates at both ends in a level manner. Failure to do this can result in damage to the plank ends.
- Ensure the tongues and grooves are located properly before using the knocking block and mallet to secure in place

- (If you have a pond with a 3metre side you should use the supplied extra 6" screws and screw down into the log below thereby pulling each row of logs down onto the row below, screw down into the bottom of the tongues and grooves not the top, use 2 screws for each row of logs spaced evenly from each end, this will prevent bowing along the long length by pulling the rows of logs together.

5



- Build up the walls using all your standard planks.
- The second to last planks used are the top full planks (two grooves on the bottom and a flat top).

6



- Finally you can add the top half planks.
- Once all the wall sections are in place, tap the walls down so that everything interlocks together properly. Use the knocking block to hit with the mallet so you do not damage the product.

### For ponds with a 3 metre side only

- You will have been supplied with 2 lengths of 4x3 and 8 gold screws. These are placed at the bottom of the pond across the width evenly spaced from each end with 2x 6" screws in each end, pre drill holes before fixing in place, they help to reduce any possibility of sides pushing out.



- You will also have been supplied with 4x 4" timber posts, these are to go along the 3-metre side equally spaced from the end, so for clarity you will have two upright posts along each 3-metre side and none on the shorter sides.
- Screw through the 44mm timber logs from the inside and into each of the upright posts with the 6" screws supplied, this will further strengthen the 3-metre side and prevent bowing.

### For all pond sizes

- At this point insert pond liner, we recommend getting into the pond with socks or soft shoes on and ensuring the liner is pushed into the bottom edges and then moving upwards pushing it into the corners, pull pond liner over the sides and drape over the side whilst you fill the pond with water, do not cut top of liner until you are sure the liner has fully settled into the bottom and side edges. There are videos on YouTube that will help with folding the liner into the corners but it is customer preference as to how this is done
- Once you are happy that the liner has settled to its maximum, using the 2x2 framing fit flush with top of logs sandwiching the liner between the top logs and the 2x2 framing pieces, fix in position with silver screws.
- Using a sharp knife trim off excess pond liner around the top taking care to leave as much as you can without it being unsightly, this will be covered by the top timber plates, using the 2" batten timbers you should sandwich the liner between the batten on the outside of the top of the pond and the top log of the main timber structure, if you have a 3 metre side you will need to cut the battens to fit either side of the upright posts which support the 3 metre side.

7



- There are pre-marked screw positions on some models, care is needed to avoid damaging any electrical cables.
- Take your time to position the top shelving evenly.
- Carefully fix in place using the screws provided, being careful not to pierce the liner. Use all the fixings provided making sure you fix into the corners of the top shelving as shown.

- Now leave the pond to settle, add maybe a fish or two (not too many at this stage) or some plants to get the natural nitrogen cycle going and enjoy!

# Warranty

## Wooden Ponds

Layzee Ltd gives an extended

10-year parts only warranty on 44mm and an extended 5-year parts only warranty on 27mm wall structure planks only, against wood rot and insect infestation attack.

- Timber structure walls 10 years on 44mm OR 5 years on 27mm warranty
- Liner 10 years on the welds on 44mm OR 5 years on the welds on 27mm warranty
- Top Shelving 1 year warranty

## Terms and conditions on the wall structure planks and liners:

Original Proof of Purchase must be supplied, along with details of any valid warranty issues with photographic evidence.

All warranties must have been registered at [www.layzeeliving.co.uk](http://www.layzeeliving.co.uk) (to extend to 5 or 10 years as above) within 60 days of purchase date.

This warranty is between Layzee Ltd and the original purchaser and is non-transferable.

The product must be installed in accordance with the installation manual.

Layzee Ltd will not be held responsible for removal or reinstatement of any components or accept any responsibility for any consequential loss.

Any modifications carried out to our products will void any warranty or claim.

Any warranty is on a pro rata basis over time e.g. For a 10-year warranty, a problem at 36 months the warranty will cover 70% of the cost of replacement parts on any valid claim. For a 5-year warranty at 36 months the warranty will cover 40% of the cost of replacement parts on any valid claim. See warranty examples below:

### 5 Years - 27mm Wooden Ponds

1st Year = 100%

Between 12-24 Month = 80% - 60%

Between 24-36 Months = 60% - 40%

Between 36-48 Months = 40% - 20%

Between 48 - 60 Months = 20% - 0%

### 10 Years - 44mm Wooden Ponds

1st Year = 100%

Between 13-24 Months = 90% - 80%

Between 25-36 Months = 80% - 70%

Between 37-48 Months = 70% - 60%

Between 49 - 60 Months = 60% - 5%

Between 61 - 72 Months = 50% - 40%

Between 73-84 Months = 40% - 30%

Between 85-96 Months = 30% - 20%

Between 97-108 Months = 20% - 10%

Between 109 - 120 Months = 10% - 0%

Wooden products use natural materials, any movement or discolouration can be expected. The Garden Timber

Company accept no liability for any such occurrence.

Care must be taken to avoid any damage to the product, which may void any warranty.

Any product must remain in its original installation location.

At the installation, where a valid warranty issue may occur, access for inspection must be made available with permission to take any required samples of the product for independent testing.

Our timber products must not be submersed in water. Adequate drainage for our timber products must be in place, to avoid constant wet conditions for the timber. In the form of a shingle soak away or submersible pump if necessary. If our product is partially or fully submerged inground, then adequate pea shingle should be installed, including a drain off, completely protecting the product from ground water. Failure to protect the timber from such issues will void any warranty.

This warranty covers the timber wall planks from wood rot and insect attack only. This applies only to the infected planks, providing they are returned to our Factory at the consumers cost and risk, any replacements will be arranged in accordance to this warranty and returned to the site of the original delivery.

Any warranty will be void if it is deemed that there has been a failure of regular upkeep of your pond.

If it is deemed that a pond has been left partially or completely empty the liner warranty will be classed as void.

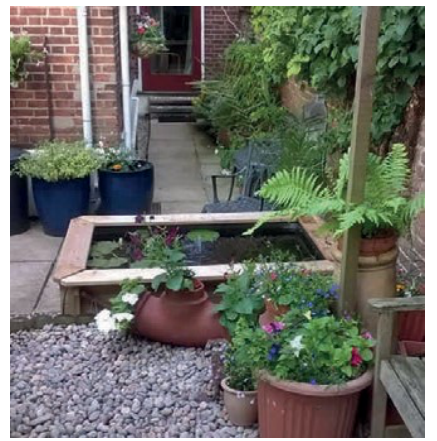
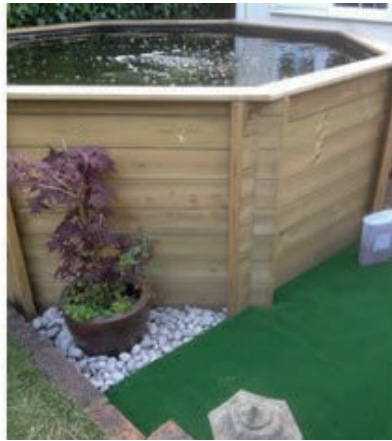
The pond should maintain 80% water level minimum at all times.

Liner warranty will only cover manufacturing defect of the weld, and does not cover any mechanical damage which may arise. i.e. user error cuts, rip etc.

## Exclusions include

- Any of our products used outside of the UK are not covered by our extended warranty.
- "Act of god" e.g. fire, flood, lightning.
- Any other accessories that come with our products like plastic sand pit cover or play sand are only warranted to be free from material or manufacturing defects at time of purchase only.
- Any damage caused by livestock animals or persons.
- We accept no liability for any livestock, damage to property or persons due to manufacturing defects.
- Any loss or damage from general wear and tear.
- Failure to comply with local regulations or laws on our products, whether for domestic or commercial use.
- We shall not be liable for and any consequential loss caused to our products by third party products or services.
- These terms and conditions will be construed in accordance with English law, any disputes relating to the terms and conditions shall be subject to the courts of England.

# Inspiration





[www.layzeeliving.co.uk](http://www.layzeeliving.co.uk)

Tel: 0207 867 3959