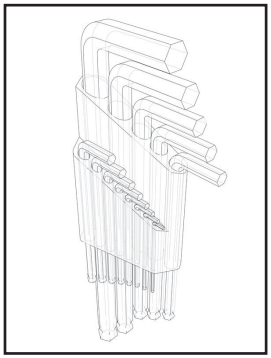
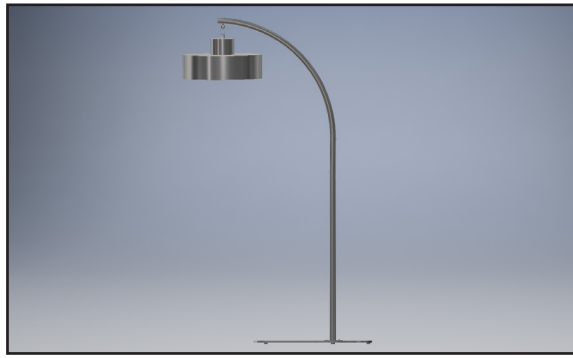


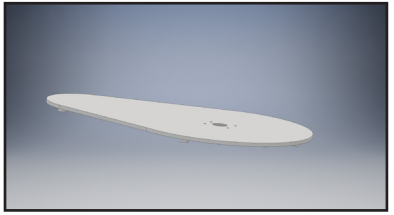
TOOLS REQUIRED



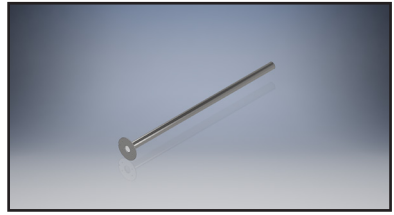
- 1x 4mm Allen Key
- 1x 3mm Allen Key



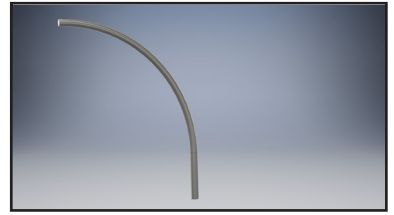
PARTS INCLUDED



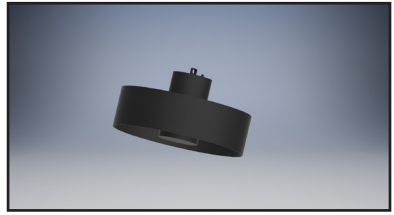
1x Base with feet fitted



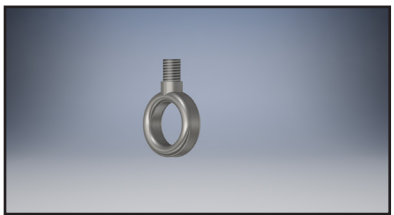
1x Bottom Straight Pole



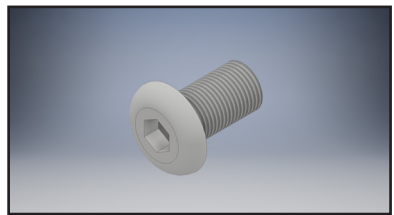
1x Top Curved Pole



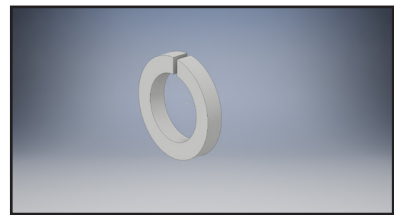
1x Hawaii 2000



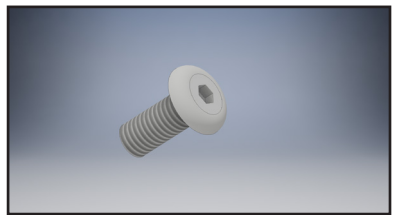
1x M8 Eye Bolt



4x M6x10mm Allen screws



4x M6 Split washers



1x M5x12mm Allen screw

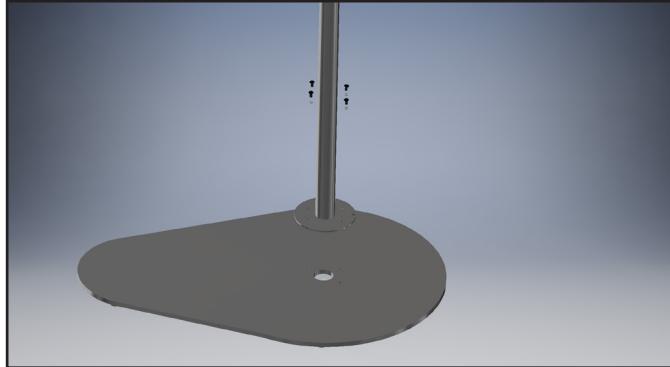
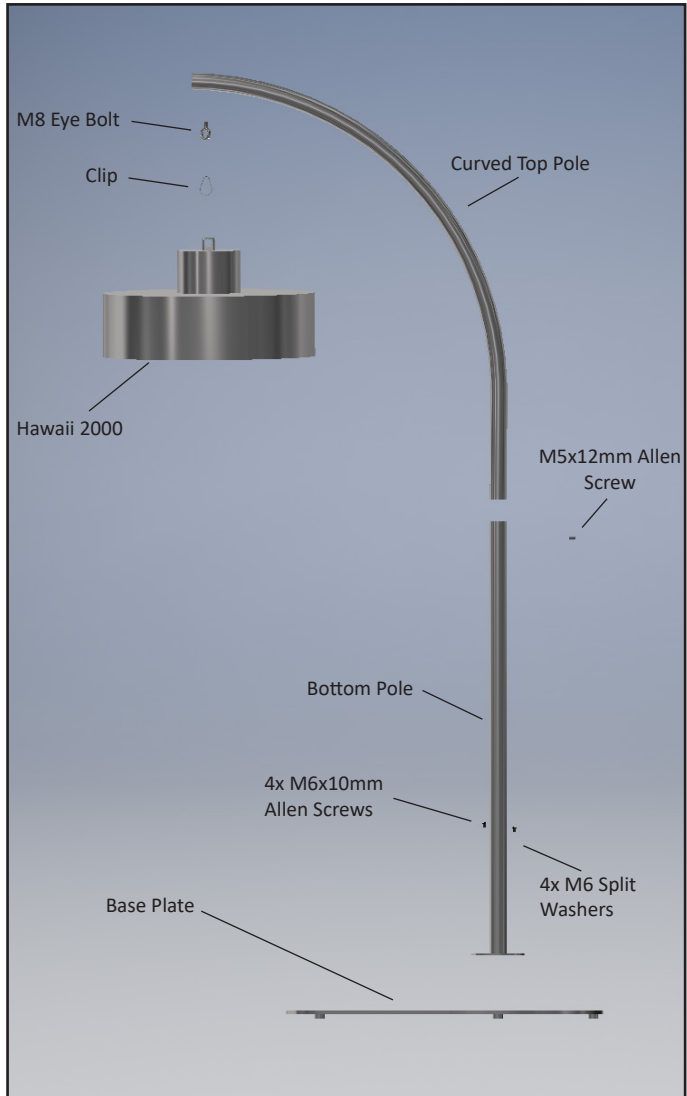


1x Carabina clip



1x Cable with plug fitted

Exploded View

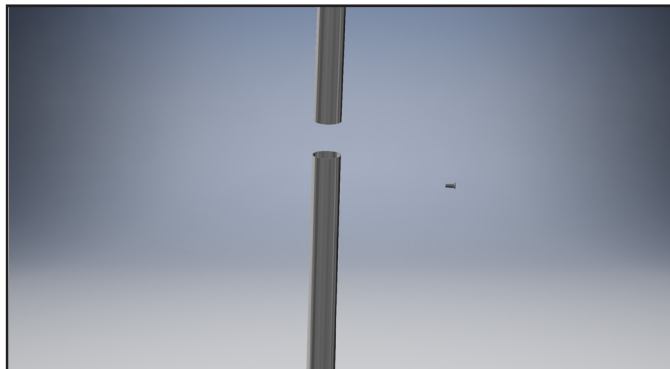


Step 1

Feed the cable up through the hole in the bottom of the base plate. Feed the end with the small connector not the 3-pin plug end.

Now feed the cable up through the bottom pole so that it end up hanging out of the top. Start at the end with the fixing plate.

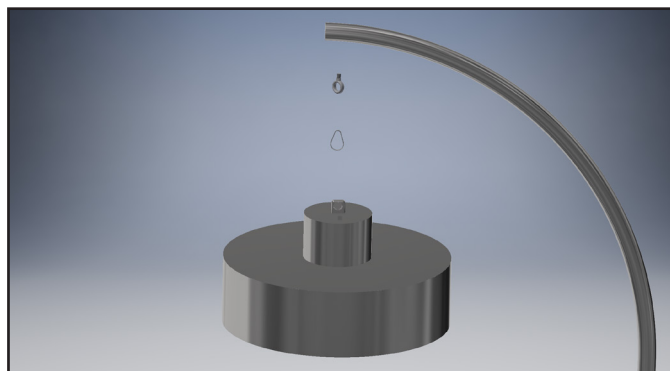
Fix the bottom pole to the base plate using the four M6x10mm screws and the M6 split washers.



Step 2

The top curved pole will arrive with the cable and plug fitted. Connect the cable from the bottom pole to the cable from the top pole and then slot the top pole into the bottom pole.

Using the M5x12mm allen screw locate the hole on the back below the join and fit the screw. You will require a 3mm allen key for this.



Step 3

Insert the M8 eye bolt into the threaded hole located at the top of the curved pole.

Using the clip, attach the Hawaii 2000 to the eye bolt.

Plug in the top of the cable to the Hawaii making sure to line up the pins correctly. Screw the two halves together sealing the inside of the plug.