

DOG ON WATER RAMP



Watch the setup video



Need Help? Contact Us:

Email: info@dogonwaterramp.com

Phone: 818-697- 3290 M-F 9am-5pm PST

DOG-ON WATER RAMP™ Instructions

The Original Inflatable/Floating **DOG-ON WATER RAMP™**

Congratulations on your Dog-On Water Ramp™ purchase!

The Dog-On Water Ramp™ is a finely crafted and very versatile water ramp for dogs. It requires only a few simple steps for assembly and is easy to install and use. Your new Dog-On Water Ramp™ is constructed of sturdy, durable materials that are gentle on dog's paws, joints and muscles. Dogs love the independence it gives them and enjoy having their own place – off the boat or dock or whatever its attached – to shake off, sit and rest between uses.

What's included:

1 – Flotation Platform Air bladder with Traction Mat

4 – Plastic Pipe Inserts

1 – SUP Pump for inflating Flotation platform

1 – Storage Bag/Backpack

2 – Lengths of Rope/Line – Used to lash the platform to your boat, dock, pool edge, etc.

1 – Repair kit includes air valve removal tool and 2 vinyl patches (glue not included – available on request)

Assembling Your DOG-ON WATER RAMP™

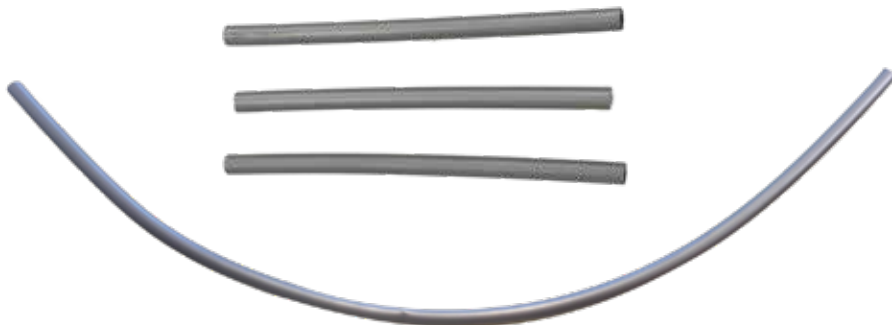
PHASE 1: Insert the 4 plastic tubes into ramp

PHASE 2: Inflate Dog on Water Ramp

1) Remove the Ramp and lay it on a flat surface to insert tubes **DO NOT INFLATE THE RAMP UNTIL PHASE 2.**



2) Locate the 3 short plastic tubes and the 1 long curved plastic tube the Air Pump & hose:



Assembling Your DOG-ON WATER RAMP™

3) Insert the 3 short plastic tubes into the 3 fabric slots on the ramp. The opening is on the left side. There is Velcro inside the end of the slot to keep it closed, pry it open with your fingers to insert the plastic tubes. The plastic tubes will slide all the way in until they disappear inside the slot.

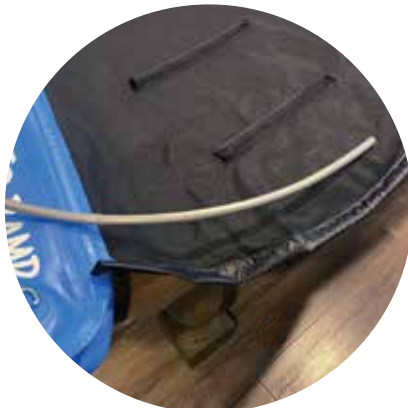
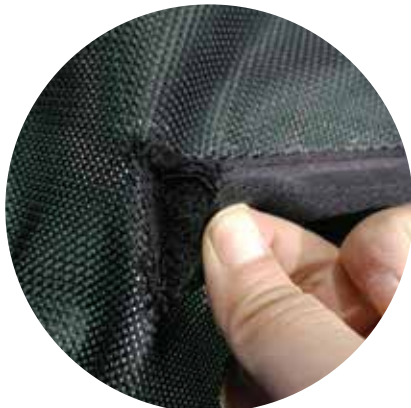


4) Once inserted push the end together, there is Velcro inside the tube to keep it closed.



Assembling Your DOG-ON WATER RAMP™

5) Insert the long curved plastic tube into the slot at the end of the ramp. There is Velcro inside the end of the slot to keep it closed, pry it open with your fingers to insert the plastic tube.



6) It will take some force, and you will need to adjust the fabric slot as the plastic tube gets farther into the slot. Try straightening the fabric slot to help make insertion easier.



Assembling Your DOG-ON WATER RAMP™

7) Be sure the long plastic tube is inserted fully so you can no longer see it. Now pinch the end of the tube by pushing down on it to secure the Velcro inside.



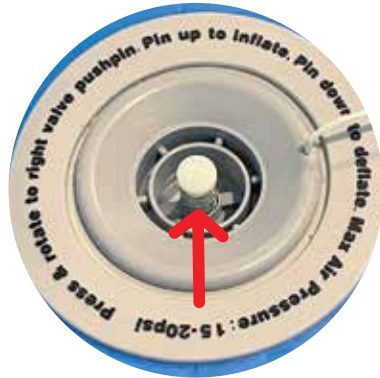
Phase 2: Inflating the ramp.

1) Locate the Air Pump and hose: Attach the hose to the pump by screwing on clockwise. Tighten snug

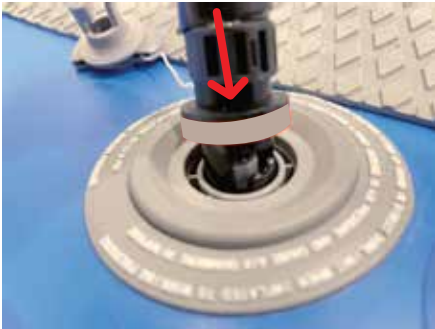


Assembling Your DOG-ON WATER RAMP™

2) Locate the Inflation Port: On the top end of the platform is an inflation Port. Remove the locking cap by turning counterclockwise (left) 1/4 turn. Under the cap is a **White** locking valve. **Be sure it is in the UP position before attaching pump.**



3) Locate the other end of the hose (gray ring) and insert the end in the inflation port and lock in place by turning **clockwise (right) 1/4 turn.**



Assembling Your DOG-ON WATER RAMP™

4) Stand Pump on floor and step on platforms with your feet: Pump air into the Flotation Platform until the inflation gauge **reads 5PSI/0.35 bar**. Flotation platform should be very hard, it is designed to be this hard to avoid flex.

**5PSI
0.35**



**DO NOT
OVER INFLATE**

**5PSI
0.35**



5) Remove pump from inflation port:

Twist counterclockwise (left) 1/4 Turn and hose will pop out.



NOTE: If Air releases after you remove the pump, push "Release Valve" to UP POSITION for reinflation.



Assembling Your DOG-ON WATER RAMP™

4) Ramp should look like pictures below if assembled correctly.

TOP



Note: bottom of ramp should have curved mesh extending down toward the water.

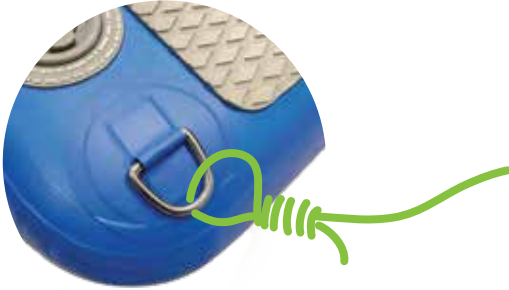
BOTTOM



Attaching the Dog-On Water Ramp™

Tethering to Your Boat, Dock, Pool Edge, etc.

1) Tie the ropes provided or your own ropes to the D-Rings on the Top, bottom or end of the floatation platform. Tie the D-rings that work best for you, **but you must attach to at least 2 D-rings.** 4 D-rings may provide stability for larger dogs.



2) Float the ramp and place the leading edge of the ramp (deck section) against whatever it is being attached to (see picture).

Lash the ropes to any available secure location: cleat, pole, rail, ladder, eye bolts, etc. For greater stability, the 2 ropes should be tied at points a couple of feet apart – rather than, for example to a single cleat or post.



Deflating your Dog-On Water Ramp™

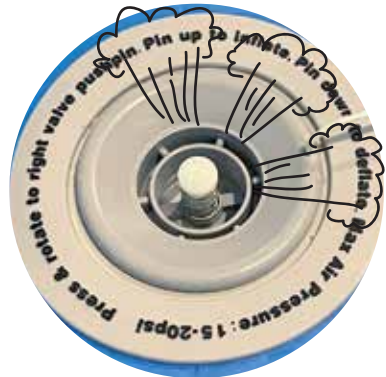
Deflating & Storage

- 1) First rinse entire platform and ropes with fresh water. Allow to dry fully before storing.
- 2) Do NOT remove the plastic tubes you inserted during assembly, those can stay in and ramp can be folded small enough to fit in storage bag.
- 3) Lay Flotation platform flat on flat surface

4) Locate the Inflation Port: On the top end of the Flotation Platform is a Inflation Port. Remove the Locking Cap by turning counterclockwise (left) $\frac{1}{4}$ + turn. Under the cap is a release valve for filling or releasing the air.



5) Push the release valve DOWN & it will lock to allow ALL the Air to release from Flotation platform. Fold flotation platform while holding down release valve to get all the air out.



Backpack Storage for Dog-On Water Ramp™

Fold items and place in backpack/storage bag.

Bag is intentionally large so all items will fit in bag. Remove Pump Hose if you need extra space.

Adjust backpack straps to fit snug on back

Be sure all items are dry before storage to avoid mildew.



Dogs are usually eager to get wet without much encouragement. Some dogs take to their Dog-On Water Ramp™ naturally, showing you how it is done. But if your pal needs a little help... tie a length of line, about 15 feet long, to a floatable retrieving toy. While holding on to one end of the line, toss the toy into the water a few feet in front of the mesh ramp of the Dog-On Water Ramp™. Wait until your dog gets near the toy and then simply guide him/her by pulling the retrieving toy between the tubes and towards the platform deck. (Your dog can also be trained to safely enter the water by going off the Platform / Deck and between the flotation tubes.)

Usage and Maintenance

The Dog-On Water Ramp™ is designed for recreational usage by dogs and should provide years of enjoyment. We highly recommend taking the Dog-On Water Ramp™ out of the water between uses and hosing or washing it to remove residual salt water, chlorine/chemically treated pool water, algae, corrosive chemicals, etc. The Traction Mat is suitable for wet areas but should be allowed to dry between uses. Failure to provide diligent, proper care and maintenance will void the warranty and claims for damage. If the Dog-On Water Ramp™ is left in the water for extended periods, the prolonged contact with salt water, algae, chlorine, residual petroleum products, etc., may cause a water line on the side of the flotation pad. This is normal and will not affect the performance of the ramp.

REPAIR INSTRUCTIONS

Small punctures, tears or cuts less than 1 inch in size can be repaired using the included repair kit included: 2 x Vinyl Patches, Valve removal tool for valve replacement.

NOTE: WE DO NOT include Polyurethane Glue in the repair kit because it is a flammable material that Amazon restricts us from including.

If you need the glue you can purchase it from your local hardware store or contact us at

info@dogonwaterramp.com or 818- 697-3290

and we will be happy to mail you the glue.



WARRANTY INFORMATION

*The Dog-On Water Ramp™ is designed exclusively
FOR PET USE ONLY.*

**USE BY HUMANS IS SPECIFICALLY DISCLAIMED AND
NOT RECOMMENDED.**

Two Year Warranty

This warranty applies ONLY to repair or replacement of any supplied or manufactured part(s) of this product that, upon inspection by Kani LLC. or its product manufacturers, proves to have failed in normal recreational use due to defects in materials or workmanship. Kani LLC will determine whether to repair or replace the unit or component at no charge to the purchaser.

This warranty shall not apply and does not cover any problem(s), that if it is determined by Kani LLC. or its product manufacturers, that the problem(s)/defect(s) was caused by damage resulting from misuse, abuse, neglect, failure to follow the instructions for set-up and installation, or failure to comply with the recommendation in the Usage and Maintenance section of the Instructions. This Warranty does not apply to installation or associated expenses, onto any boat or any other structure, or for commercial use. This warranty also does NOT cover any modifications to the original product or to any structure to which the Dog-On Water Ramp™ has been attached. In no event shall Kani LLC have liability that exceeds the purchase price of the product.

WARRANTY INFORMATION

Kani LLC sole responsibility is as set forth above and assumes no responsibility for warranties either expressed or implied beyond that which is contained herein. Kani LLC

SHALL NOT BE LIABLE FOR ANY CONSEQUENTIAL OR INCIDENTAL DAMAGES (such as damage to a boat or other such structure, or injury to any animal or person) RESULTING FROM ANY BREACH OF WARRANTY, EXPRESSED OR IMPLIED, APPLICABLE TO THIS PRODUCT.

Since some states do not allow the exclusion of limitation of consequential or incidental damages, or of implied warranties, these limitations may not apply to you. This warranty gives you specific legal rights and you may also have other rights, which vary from state to state.

If this product needs service, please contact us for instructions. Non-warranty repairs will result in charges for materials, labor, and shipping.

For prompt responses to Warranty/Service Requests please submit the following via email to: info@dogonwaterramp.com

PLEASE INCLUDE:

Complete contact information + Receipt/Proof of purchase
Detailed description and nature of the defect/problem
Photos of the affected area(s) of the defect/problem

FEATURES



Watch the setup video

Scan QR Code below to watch a video on how to set up your ramp or go to www.dogonwaterramp.com/setup



HOW TO SCAN: OPEN, AIM & TAP



Open the camera on your phone



Aim it at the Flowcode



Tap the banner that appears

Thank you!

Need Help Contact Us:

Email: info@dogonwaterramp.com

Phone: 818-697- 3290

M-F 9am-5pm PST

We are located in Los Angeles CA

DOG ON WATER RAMP

