

## DIAETCH™ 37% Phosphoric Acid Etching Gel



**DiaEtch is a blue colored gel-type substance containing 37% phosphoric acid that etches enamel and dentin to promote adhesion of primer/bonding agent adhesives to tooth structure and restorative materials.**

### FEATURES & BENEFITS

- Quick and precise application with small gauge (25 gauge) pre-bent tip
- Convenient dispensing syringe
- 15-second etch
- Excellent biocompatibility
- Ideal consistency and material thickness
- Washes off easily without any residue for predictable adhesion
- Color can be easily differentiated from the tooth

### Order Information

#### Item #A2001-3101 Economic Package

Contains: 5 syringes of 5 ml and 20 disposable tips

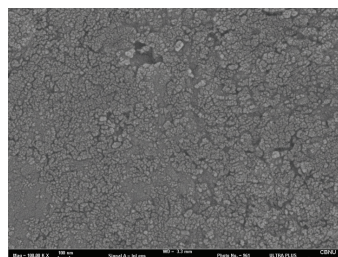
#### Item #A2001-3103 Regular Package

Contains: 2 syringes of 3 ml and 10 disposable tips

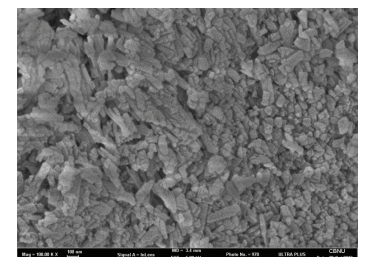
#### Item #A2001-3202 Refill Package

Contains: 1 syringe of 5 ml and 5 disposable tips

BEFORE



AFTER



Micro photographs of premolar, X1,000