



Detailed analysis of hereditary cancer genes

**SAFE | SENSITIVE | RELIABLE**

## WHAT IS **PreSENTIA**?

PreSENTIA is a genetic test that screens for genetic changes (mutations in the DNA) in the genes with cancer susceptibility. These mutations can be inherited from parents to their children, and exist from birth. They do not always develop into cancer but they raise someone's chances of developing cancer in the future.

## KNOW YOUR **GENES**, KNOW YOUR **CHOICES**

PreSENTIA can potentially identify the genetic changes that could cause cancer. This has many benefits on planning, prognosis and directing better treatment decisions:

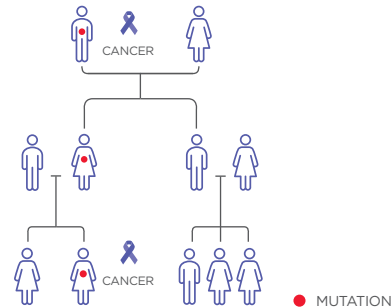
- Targeted **cancer monitoring** – recommended screening tests at key time intervals to detect cancer early, when treatment is more beneficial
- Prevention of cancer by **prophylactic measures**
- Actionable information for family members that might carry the same genetic mutation
- Improved classification of the disease for **better clinical management**
- Drug therapy (chemoprevention), where applicable

## WHAT DOES **PreSENTIA** TEST FOR?

BREAST & GYNECOLOGICAL 26 GENES	BREAST / GYN GUIDELINES -BASED 19 GENES	BREAST HIGH-RISK 7 GENES	BRCA1 / BRCA2 2 GENES	COLORECTAL 17 GENES	COLORECTAL HIGH-RISK 10 GENES	COLORECTAL NON-POLYPOSIS 5 GENES
COLORECTAL POLYPOSIS SYNDROME 7 GENES	MYELODYSPLASTIC SYNDROME / LEUKEMIA 24 GENES	GASTRIC 14 GENES	PROSTATE 15 GENES	PANCREATIC 17 GENES	RENAL 13 GENES	SKIN (XP-ASSOCIATED) 9 GENES
FAMILIAL MELANOMA 7 GENES	PARANGLIOMA / PHEOCHROMOCYTOMA 6 GENES	PARATHYROID 1 GENE	THYROID 1 GENE	PAN-CANCER 62 GENES		

## WHO IS **PreSENTIA** FOR?

- Family members with cancer in the same side of the family
- Family members with early cancer onset
- Family members with rare cancer types
- A family member with multiple cancers
- A family member that has been diagnosed with a genetic mutation that has cancer susceptibility
- Patients already diagnosed with cancer



## HOW IS **PreSENTIA** PERFORMED?



PreSENTIA is a non-invasive, safe and easy test to perform. Sample is collected via a buccal swab, by moving it in circular movements in the inside of the cheeks.