



 **UPGORILO**

DOG WASTE STATION

Step By Step Instructions Manual



THANK YOU FOR CHOOSING UPGORILO!

Your new UPGORILO dog waste station has arrived and it will make your life so much easier.

That's why we put so much effort into designing it to perfectly fit your needs.

But first things first, we need to install it!

When we say 'we', we mean we're going to guide you, step by step.

We created this instructions manual so that you won't feel overwhelmed and get your new dog waste station up and ready to use in no time!

We also know that sometimes things just don't seem to fit, so don't hesitate to drop us a line at contact@upgorilo.com if you have questions or need help!

Anyways, this UPGORILO dog waste station
CAN'T WAIT TO BE OF SERVICE so let's assemble it!

MISSING A PART? DON'T WORRY, WE GOT YOUR BACK!

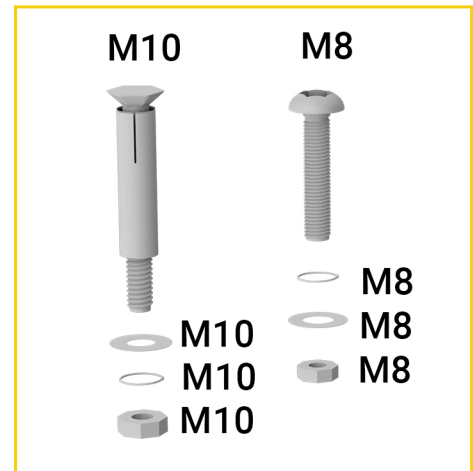
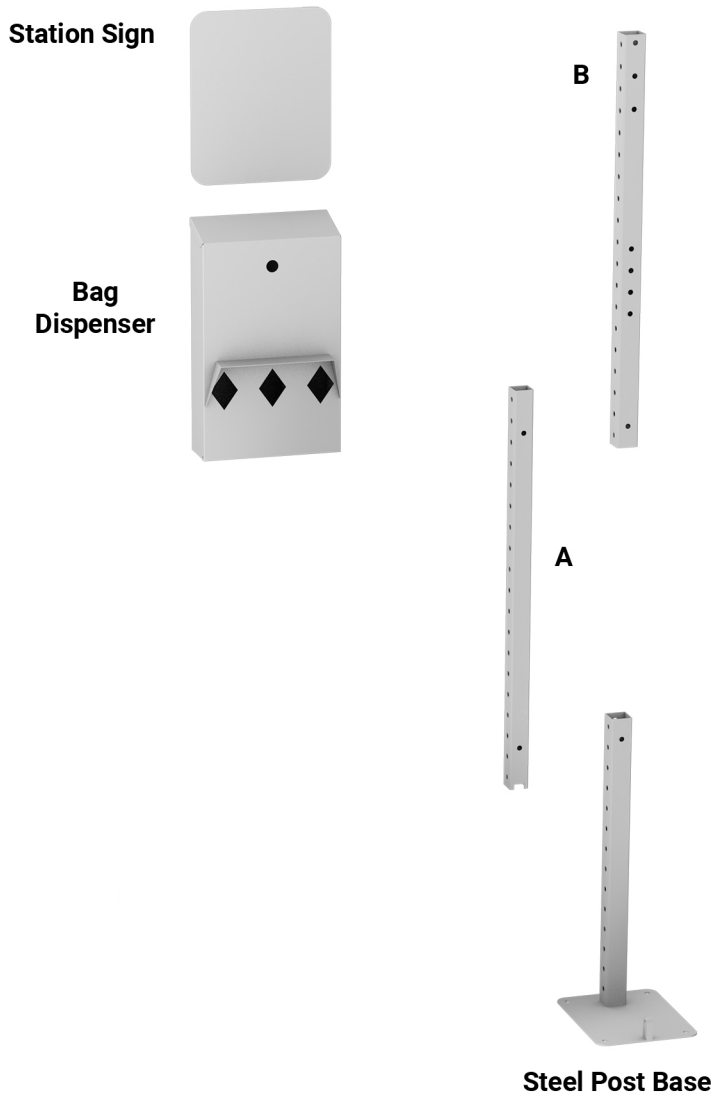
Compare the sketch on the next page with your package.

Are all the pieces there?

We added one extra screw for every screw type in your package.

However, sometimes errors happen, so if anything is missing, just send as an email and we will make sure to fix it!

HERE IS WHAT YOUR DOG WASTE STATION PACKAGE SHOULD CONTAIN



Before you start, here are a few quick pointers:

The installation requires two people, so call a friend to join the fun!

For more stability, it's best to anchor the dog waste station in cement, on the ground.
In this case, along with the items provided you will also need a Percussion Drill & a Hammer.

Steel post base (1pc)
Steel post segment A (1pc)
Steel post segment B (1pc)
Station sign (1pc)
Bag dispenser (1pc)
Screws M8 50mm (15pcs)
Flat Washer M8 (15pcs)
Spring Washer M8 (15pcs)
Nuts M8 (8pcs)
Box of dog waste bags (3pcs)
Bag dispenser key (2pcs)
Hex Wrench (1pc)
Outer Hexagon Wrench (1pc)

For mounting in the cement:

Expansion bolt M10 (4pcs)
Flat Washer M10 (4pcs)
Spring Washer M10 (4pcs)
Nuts M10 (4pcs)

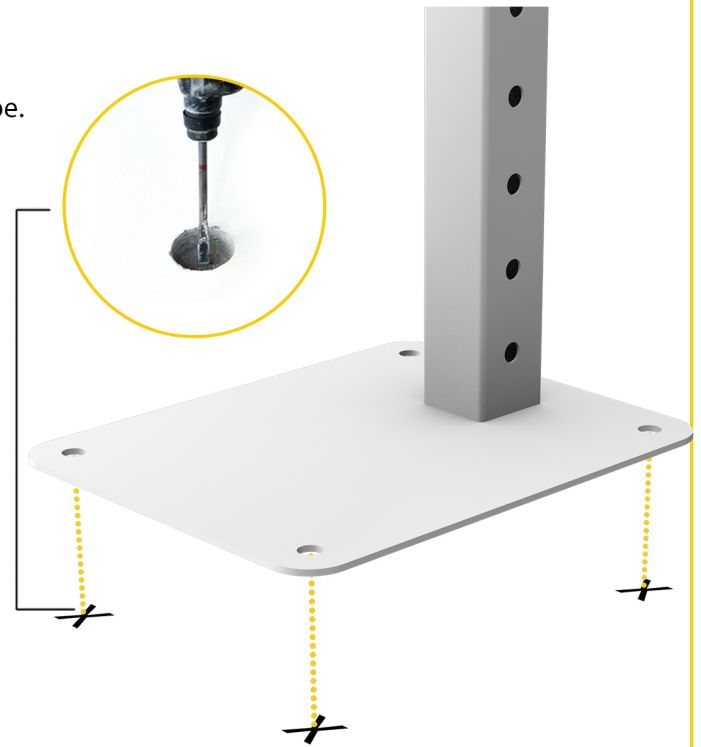
READY TO ASSEMBLE YOUR NEW DOG WASTE STATION?

STEP 1

Place the base on the cemented surface, exactly where you want your dog waste station to be.

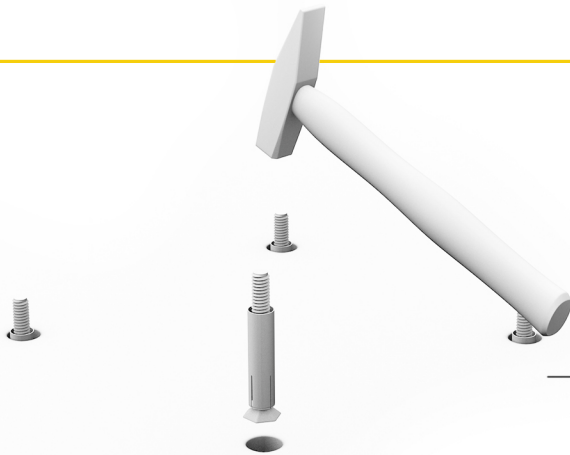
Mark the 4 places of the holes on the ground. Place the post aside.

Using a Percussion Drill, make holes in the marked places.



STEP 2

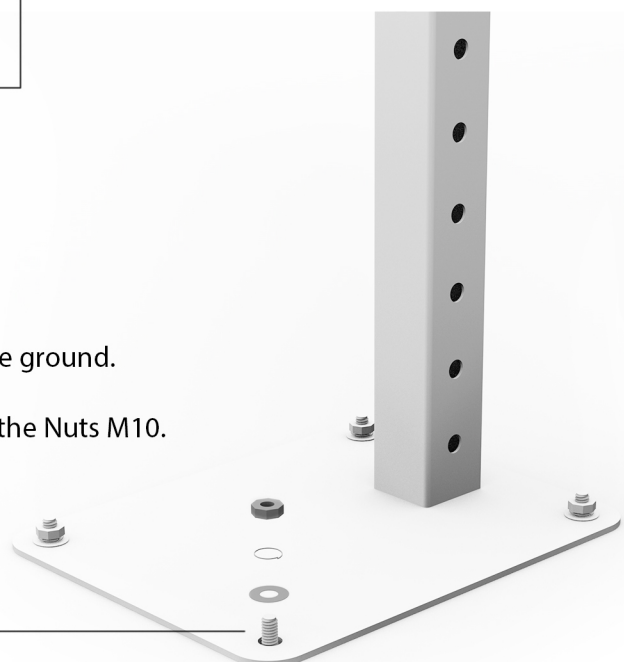
Insert the screw M10 with the expansion bolt in the hole. Fix in the hole using a Hammer.



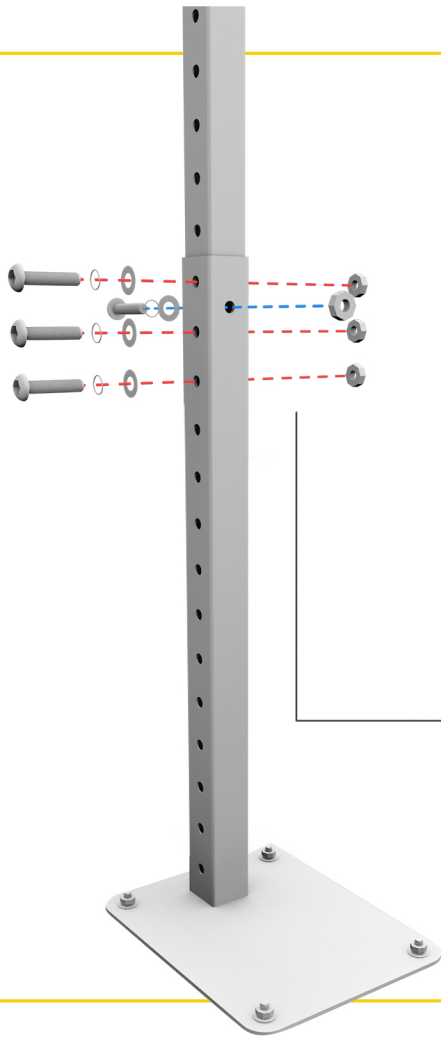
Place the post with the holes through the screws in the ground.

Add the Flat Washers M10, the Spring Washers M10 & the Nuts M10. Fasten in place using the Hex Wrench.

Repeat for the other 3 holes.



STEP 3



Take segment A.

It should have 1 hole at the bottom & 1 hole at the top.

Slide in the segment A.

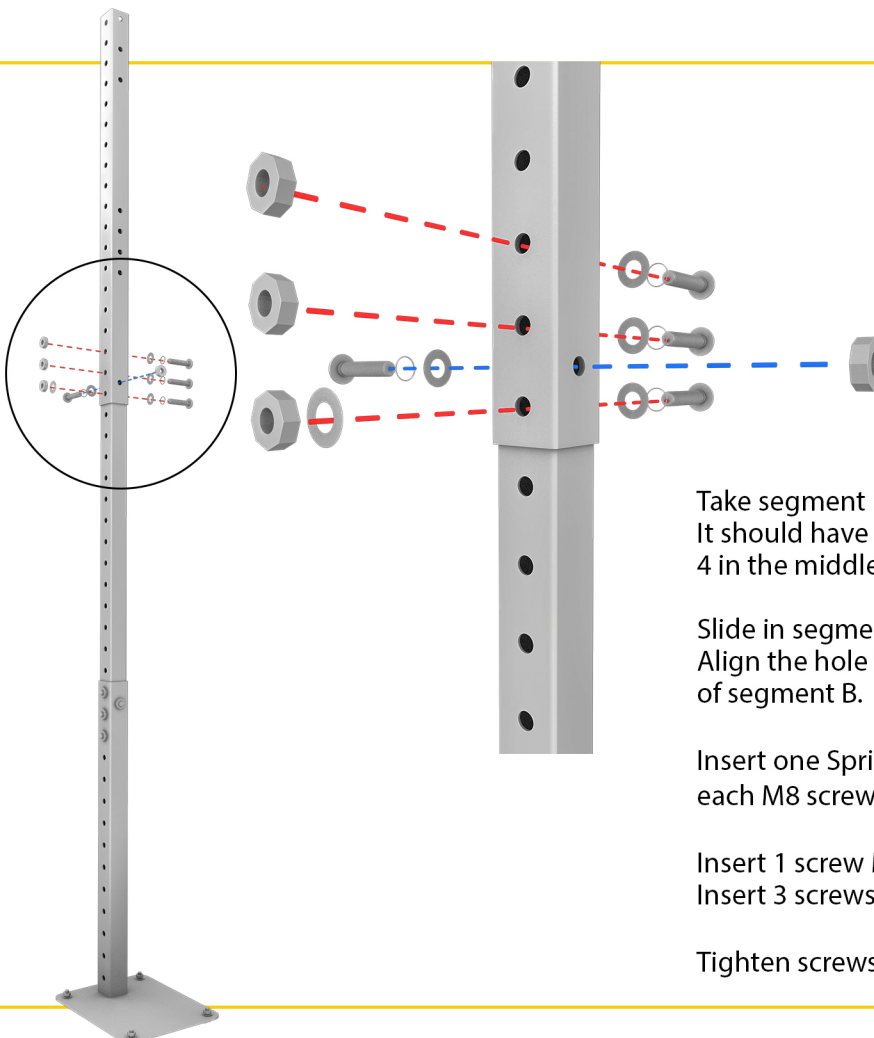
Align the last 3 side holes of the base with the first 3 side holes of segment A.

Use 4 M8 screws. Insert one Spring Washer M8 & one Flat Washer M8 on each M8 screw.

Insert the 3 screws M8 through the side.
Insert 1 screw M8 from back to front.
(Just like the picture)

Tighten screws with Nuts M8 using the Hex Wrench.

STEP 4



Take segment B.

It should have 1 hole at the bottom,
4 in the middle & 3 at the top.

Slide in segment B.

Align the hole from segment A with the bottom hole
of segment B.

Insert one Spring Washer M8 & one Flat Washer M8 on
each M8 screw.

Insert 1 screw M8 from back to front.
Insert 3 screws M8 though the side.

Tighten screws with Nuts M8 using the Hex Wrench.

STEP 5

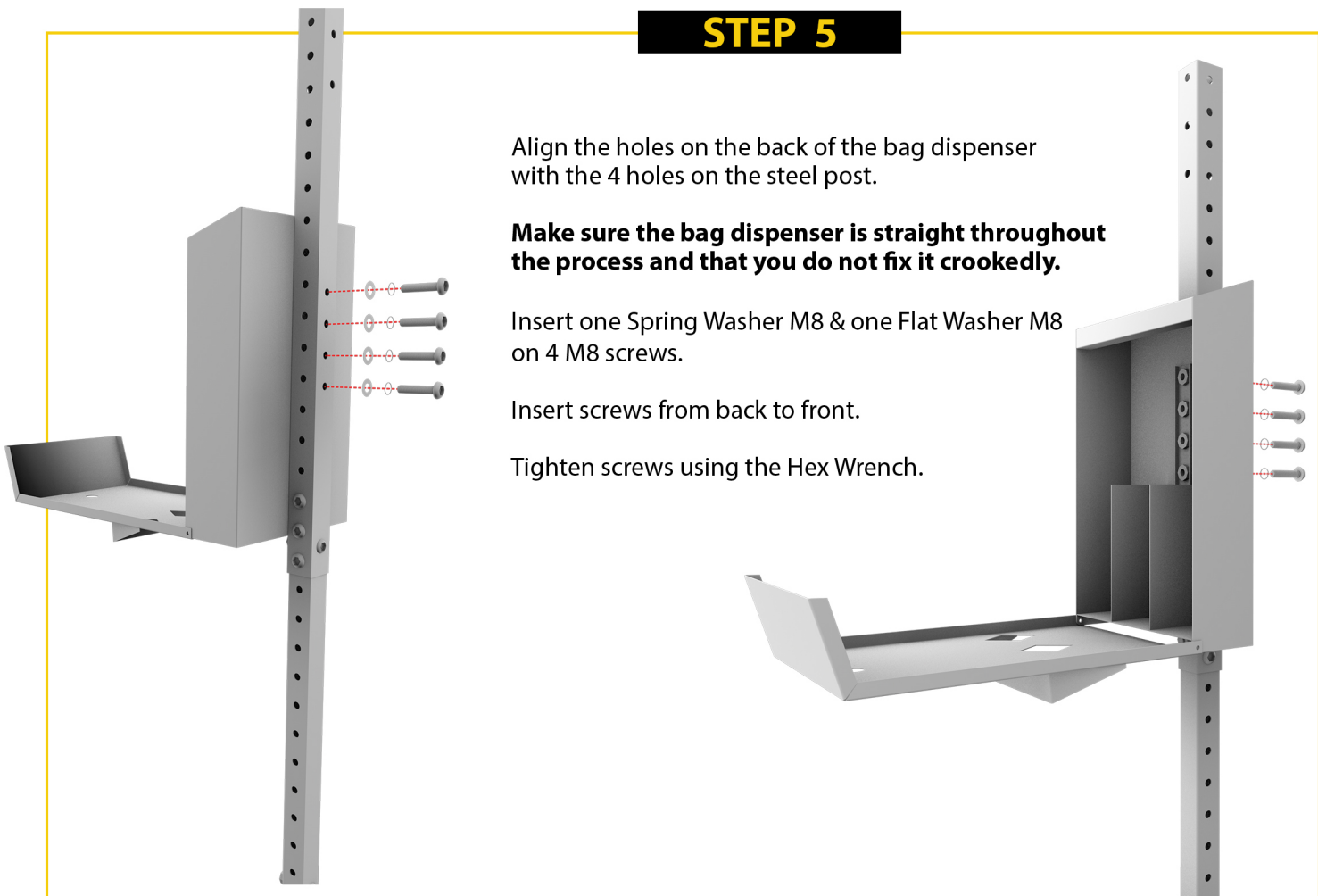
Align the holes on the back of the bag dispenser with the 4 holes on the steel post.

Make sure the bag dispenser is straight throughout the process and that you do not fix it crookedly.

Insert one Spring Washer M8 & one Flat Washer M8 on 4 M8 screws.

Insert screws from back to front.

Tighten screws using the Hex Wrench.



STEP 6

On top of the steel post, align the holes on the back of the station sign with the holes on the steel post.

Make sure the station sign is straight throughout the process and that you do not fix it crookedly.

Insert one Spring Washer M8 & one Flat Washer M8 on 3 M8 screws.

Insert screws from back to front.

Tighten screws using the Hex Wrench.



STEP 8

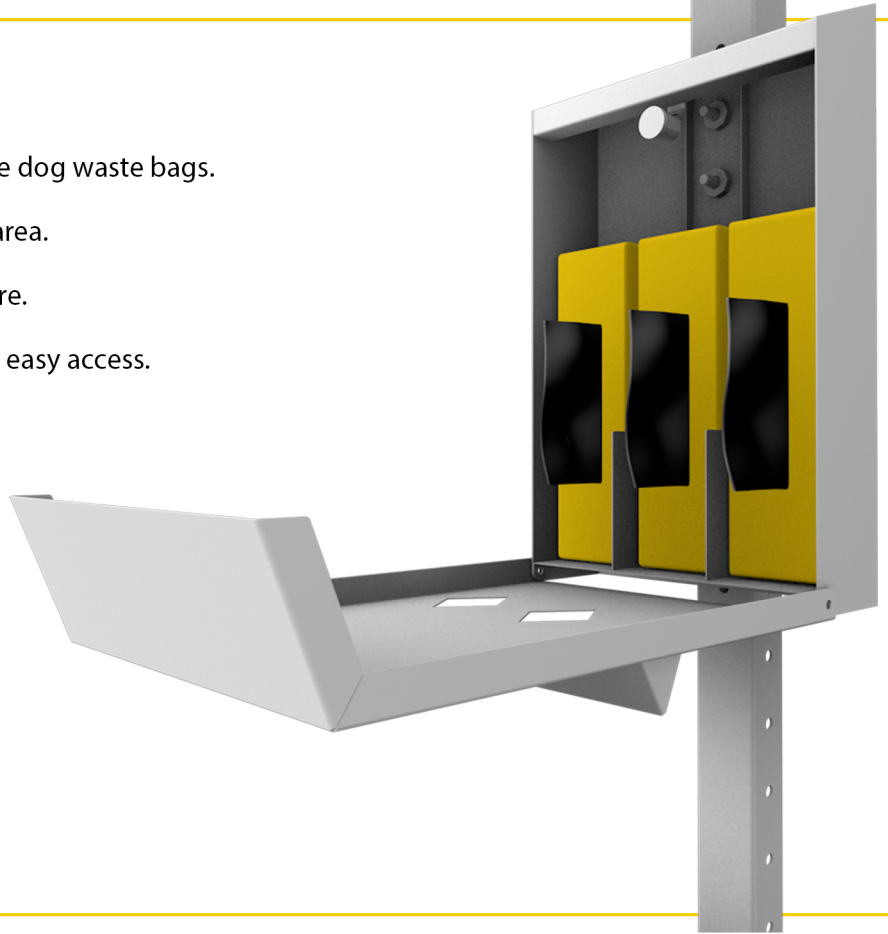
Unlock the bag dispenser to install the dog waste bags.

Open the boxes from the perforated area.

Place the boxes as shown in the picture.

Pull the bags out of the box a little for easy access.

Close & lock the dispenser's door.



That's it, you're done!

FREQUENTLY ASKED QUESTIONS

ALL YOU NEED TO KNOW ABOUT YOUR NEW DOG WASTE STATION

1. What happens if the item is defective or has a quality issue?
We stand behind our products 100%. You only need to write to us at contact@upgorilo.com and we'll be happy to offer a solution.

2. What type of replacement dog waste bags will fit the dispenser?

The dispenser can fit any dog waste bag rolls that come in boxes of maximum 3.18"w x 3.4"d x 9.45"h.

3. If I bought more than one UPGORILO dog waste station can I use the same key for all of the bag dispensers?

Yes, all of the UPGORILO Dog Waste Bag Dispensers are made to match the same key, so you won't find yourself carrying a bunch of them around.

THANK YOU FOR BEING PART OF **OUR STORY**

A dog it's a perfect family member, always spreading joy!
But the thing is... he also has needs. Some of which make us turn our nose up a little.

We, at **UPGORILO**, love dogs! And came up with a **great solution**,
designing it to be even more **practical and better to use!**

This **Dog Waste Station** helps you to keep parks, streets, **multi-family properties and residential backyards** clean by providing a spot for people to always have a clean, easy to open bag at hand and to also quickly throw away dog waste.

We all love dogs, but we also love **clean and healthy** spaces for us and our four-legged friends to enjoy!

UPGORILO dog waste station includes a signage, a triple storage bag dispenser and a can.
It also includes **3 rolls of dog waste bags & 50 can liners**, so it can be of service on the spot!

The **glow in the dark feature** makes it visible at all times, whilst the lidded can & the rain shed keep the odors in and the water out.

PINCH, PICK UP, DISPOSE - now made easier.

Don't forget, we're always **happy to hear from you**.
If you have any issue, or just want to say hello, don't hesitate to write.

Our friendly customer support team can't wait to help you!
contact@upgorilo.com