

A professional studio photograph of three models. On the left, a woman with dark curly hair and a light beige trench coat. In the center, a woman with dark hair pulled back, wearing a light yellow high-collared blouse. On the right, a woman with long brown hair and a light beige trench coat. The background is a plain, light grey. The text 'RefectoCil AUSTRALIA' is at the top, and 'Training MANUAL' is at the bottom.

RefectoCil  
AUSTRALIA

*Training*  
**MANUAL**



LASH & BROW STYLING  
by RefectoCil





# Colours



057103

## Pure Black No. 1

15 ml

Especially recommended for tinting eyelashes and eyebrows of clients who have black or dark brown hair – for the most beautiful black styles!



057113

## Graphite No. 1.1

15 ml

To naturally cover and subtly darken greying or white hair. Mixing with graphite lets other RefectoCil colours show a cooler tone. For timeless styles!



057203

## Blue Black No. 2

15 ml

Blue black is a shade of black with a soft blue shimmer which adds additional depth and shine and creates mind-blowing blue black styles.



057212

## Deep Blue No. 2.1

15 ml

Deep blue is an intensive dark blue tone, that is especially recommended for lashes and that matches blonde or light blonde looks in a dazzling way!



057303

## Natural Brown No. 3

15 ml

Natural brown No. 3 is a strong and versatile opaque brown that creates the most natural brunette looks.



057313

## Light Brown No. 3.1

15 ml

Light brown is a natural, versatile light hue, that enhances the brilliant effect of dark blonde to light blonde hair. Brighten up any style!



057402

## Chestnut No. 4

15 ml

Chestnut lends lashes and brows a warm brown shade with subtle red tones and gives any style that charismatic extra touch!



057412

## Red No. 4.1

15 ml

Red is an intense shade, that perfectly matches eyelashes and eyebrows to a wide variety of red hair colours and enhances daring red looks in a captivating way!



057002

## Blonde Brow

15 ml

With Blonde Brow eyebrows can be lightened up to 3 shades. It helps with tinting grey or bristly eyebrows and enables tinting dark brows in light hues. Use only with RefectoCil Oxidant Cream.

## The Benefits

- Long, dark and full eyelashes
- Perfectly defined eyebrows
- Lasts up to 6 weeks
- Individually customizable colour, 9 base shades, 8 mixable!

LASH STYLING  
by RefectoCil

*Lovely  
Lashes & Brows*



# Lash Lift & Brow Lamination



0550112

## Eyelash Lift

36 applications

### Intense and wide-eyed look!

RefectoCil Eyelash Lift lifts lashes straight up and thereby makes even short lashes look significantly longer and thicker for up to 6 weeks. The special formula nurtures the lashes. The lifting pads, made in Germany, fit the curvature of the lid perfectly and can be used up to 100 times.

### Content:

- 2 Lifting pads per size S, M, L
- 2 Lashperm, 3,5 ml
- 2 Neutralizer, 3,5 ml
- 1 Glue, 4 ml
- 1 Lifting tool
- 2 Mini-cosmetic dishes
- 2 Cosmetic brushes

Single articles can be reordered separately.

Before Eyelash Lift



After Eyelash Lift



0550113

## Brow Lamination Kit

approximately 15 applications

**For fuller looking brows.** RefectoCil Brow Lamination Kit allows you to design and fixate brows semi-permanently in any desired shape. The ingredient keratin has a hair strengthening effect and the application time is only 10 minutes. The brows can be coloured immediately after the treatment.

### Content:

- 2 Lash & Brow Perm 3,5ml
- 2 Neutralizer 3,5ml
- 2 Cosmetic Brushes
- 2 Application Dishes
- 1 Eye Care Pads for free

# Kits & Displays

0576622

## Starter Kit Basic

**Complete set for classic styles.** The kit contains:

- 6 RefectoCil tints (pure black, graphite, blue black, natural brown, light brown, chestnut)
- 1 Oxidant 3% liquid
- 1 Eye protection papers extra (80pcs.)
- 1 Skin protection cream
- 2 Cosmetic brushes with spoolie
- 1 Browista Palette
- 1 Micellar eye make-up remover
- 1 Tint remover
- 1 RefectoCil Style Book, that shows how to recreate current catwalk trends.



0576632

## Starter Kit Creative

The kit contains:

**Complete set for creative styles.**

- 1 RefectoCil Blonde Brow
- 5 RefectoCil colours (pure black, deep blue, light brown, graphite, red)
- 1 Oxidant 3% cream
- 1 Eye protection paper extra (80 pcs.)
- 1 Skin protection cream
- 2 Cosmetic brushes with spoolie
- 1 Browista Palette
- 1 Micellar eye make-up remover
- 1 Tint remover
- 1 RefectoCil Style Book, that shows how to recreate current catwalk trends.

057778

## Mini Lash & Brow Styling Kit

**The Mini Lash & Brow Styling Kit is the ideal kit for beginners.** It contains all products needed for a Brow or Lash Styling by RefectoCil service. It is perfect for the first contact with the brand, as give away, at fairs, vocational schools or price draws.

### Content:

- 3 RefectoCil colours (graphite, blue black, natural brown)
- 1 Oxidant liquid
- 1 Silicone Pads
- 2 Mini Cosmetic Dishes



# Kits & Displays



05735

## Lash & Brow Bar

23 x 19 cm

**Handy & stylish - have your own Lash & Brow Bar in the salon!** The kit contains:

- 4 Pairs of Brow Styling Strips and 4 additional strips
- 8 RefectoCil colours (pure black, graphite, blue black, deep blue, natural brown, light brown, chestnut, red)
- 1 Blonde Brow
- 1 Tint remover
- 1 Micellar eye make-up remover,
- 1 Oxidant 3% cream
- 1 Skin protection cream
- 1 Silicone Pads
- 1 Browista Palette
- 2 Cosmetic brushes with spoolie
- 1 Styling Gel

Also available without products, Art. No. 05894

05895

## Floor Display

58 x 175 x 59 cm

**The RefectoCil floor display is simple, practical and elegant.** It is easy to transport, offers shelves for flexible product arrangements and room for all products including the Sensitive line. The display offers large advertising space and a lockable storageroom in the back. It's an eye-catcher at fairs & events.

**Products are not included.**



## Display World of Colours

On request only – please contact your sales partner.



## Display Dare to Care

On request only – please contact your sales partner.



## Display Intense Brow[n]s

On request only – please contact your sales partner.





# RefectoCil

## Intense Brow[n]s Products



05039

### Intense Brow[n]s Activator Gel

15 ml

The easy to use RefectoCil Intense Brow[n]s Activator Gel produces the desired colour result in combination with RefectoCil Intense Brow[n]s Base Gels. The Activator Gel contains Silver Nitrate that tints brows and lashes from deep within.



05034

### Strong Primer

15 ml

The Intense Brow[n]s Intensifying Primer prepares the skin for even tinting. Choose the Intensifying Primer Strong for a very intense result.



05038

### Base Gel Ash Brown

15 ml

A cool and ashy shade of brown that suits neutral and cold colour types. To be used in combination with the Activator Gel.



05037

### Base Gel Chocolate Brown

15 ml

A medium brown shade with a slight warm undertone. Recommended for neutral or warm skin types. To be used in combination with the Activator Gel.



05036

### Base Gel Deep Brown

15 ml

A particularly dark shade of brown, for striking and eye-catching looks. Especially recommended for gentle facial features and dark hair. To be used in combination with the Activator Gel.



05035

### Base Gel Black Brown

15 ml

The almost black shade gives the face a strong frame. Harmonious with black hair or to create contrast brows. To be used in combination with the Activator Gel.

### Intense Brow[n]s Starter Kit now available:

- 1x Medium Primer 15ml
- 1x Base Gel Ash Brown
- 1x Base Gel Chocolate Brown
- 1x Base Gel Deep Brown
- 1x Base Gel Dark Brown
- 1x Activator Gel
- 1x Tint Remover
- Kit also comes with free Brow Mapper



05058

### Intense Brow[n]s Tint Remover

150 ml

Remove any unwanted skin stains or correct the shape of the eyebrows with the RefectoCil Intense Brow[n]s Tint Remover. It can also be used to create a soft ombre effect. Thanks to the mild formula, it can be applied in the sensitive eye area without concern.



# RefectoCil

## Intense Brow[n]s Products

### BROW INTENSIFYING by RefectoCil

Learn everything you need to know about Brow Intensifying by Refectocil and find out about 3 techniques developed to respond to your clients' individual brow needs.



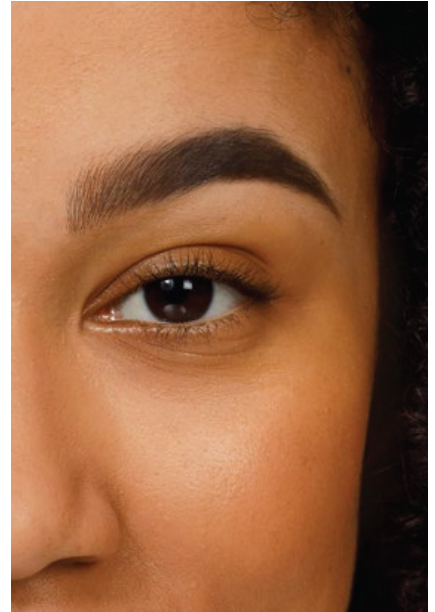
#### Full Brow Technique

For a particularly intense look.



#### Ombre Shading Technique

For a natural and feathery-like look.



#### Brow Filling Technique

For more contoured and defined brows.

Free from PPD  
& suitable for  
allergy prone and  
*sensitive*  
skin

certified  
*cruelty free*  
&  
*vegan*

Professional  
lash and brow tinting  
system based on  
*plant*  
ingredients

Comes in four  
*smudge*  
&  
*waterproof*  
customisable shades  
of brown

FOR PROFESSIONAL USE ONLY  
**R**

# Repair & Care



05912  
**Lash & Brow Booster**

6 ml

2 in 1 Double Effect. For up to 56% longer lashes as well as thicker and broader brows with fewer gaps.



05876  
**Skin Protection Cream & Eye Mask**

75 ml

2 in1! It protects the skin from stains and simultaneously acts as nourishing eye mask.



05913  
**Care Balm**

9 ml

Intensive night care. Strengthens brows & lashes. Castor oil supports natural hair growth.



05877  
**Styling Gel**

9 ml

The ideal day care! It protects the colour and nourishes the hair with the unique colour protect formula and D-panthenol. In addition unruly hair is fixed in the desired position.



05923  
**Eye Care Pads**

10 applications

4 in 1 Pad-Effect! Intensive care & moisture as well as protection against skin staining during Lash & Brow Styling.

*Dare to Care!*





# Essentials



057816  
**Oxidant 3% liquid**

100 ml

The intensive developer ensures brilliant colour results and can be used without concern in the sensitive eye-area.



057817  
**Oxidant 3% cream**

100 ml

Oxidant cream is characterized by its easy to mix texture. It ensures brilliant colour results and is a must for RefectoCil Blonde Brow.



05722  
**Silicone Pads**

10 pairs

The Silicone Pads prevent unwanted staining of the skin. They are self-adhesive - no cream is needed. The soft, impermeable high-tech silicone is anti-slip, skin-friendly and matches any eye shape. Easy to clean and reusable up to 100 times.



05790  
**Eye Protection Papers**

96 pcs.

RefectoCil Eye Protection Papers protect the lower eyelids from unwanted staining.



05791  
**Eye Protection Papers EXTRA**

80 pcs.

Extra soft and with special, impenetrable coating



05889  
**Micellar Eye Make-up Remover**

150 ml

Strengthens lashes and attracts eye make-up thanks to micellar technology „magnetically“. It cleans thoroughly – no rubbing!



05890  
**Saline Solution**

150 ml

For best possible results. Degreases and removes residues. Use before every lash & brow styling service.



05888  
**Tint Remover**

150 ml

Removes stains that develop during tinting easily and quickly. Only suited for RefectoCil oxidative tints!

# Refill

## Refill products for Eyelash Lift & Eyelash Curl

Single articles for Eyelash Lift and Eyelash Curl can be reordered separately.



05798

### Cosmetic Brushes Soft

5 pcs.



05550

### Lash Styling Glue

4 ml



05952

### Application Sticks

10 pcs.



a pair of

### Lifting Pads

The **Eyelash Lifting Pads** are available in the following sizes:

05604 **Pads S**

05605 **Pads M**

05606 **Pads L**



05609

### Lashperm/ Neutralizer

With keratin. Application time:

8 + 5 min





057671

## Application Set Mini

5 sticks, 5 mini dishes



05932

## Brow Mapper

The first step towards expertly created brows is to find the perfect shape for each brow and face shape. The new RefectoCil "Brow Mapper" allows precise brow mapping but can also be used to draw the outline of the brow shape before tinting.



05778

## Browista Palette & Browista Ring

The Browista Palette and the Browista Ring allow hands-free brow & lash tinting for the first time! Both tools come with a marking for the ideal mixing ratio and 2 compartments where brow & lash tint can be mixed simultaneously.



05706

## Brushanizer

The Brushanizer is a practical and hygienic brush storage solution that can be used for short or long brushes as well as eyelash lifting tools while you work. 3 generous storage areas allow you to work cleanly while ensuring your workspace doesn't become dirty or sticky.



05555

## Eyelash Lifter

The new Eyelash Lifter by RefectoCil is designed to allow easy lifting and a precise separation of lashes during the lash styling service.



05951

## Precision Brow Tweezer

The Precision Brow Tweezer by RefectoCil is a great tool for any brow maintenance or shaping session. It is made of stainless steel and has an ergonomically perfect shape. With the slanted tip it is easy to remove even very short and fine hair including the roots, which is extremely important for precision.

05757

## Browista Toolkit

2 brushes, 2 application dishes

The Kit contains two brushes that allow finest detail work and are equipped with a rubber spoolie. Two application dishes are also part of the set.







# Line & Shine

05927

## Highlighter Set

The "Brow Highlighter Set by RefectoCil" provides an optical lifting effect, opening your eyes more – for that irresistible look!

- Texture refined with silk powder
- Longlasting, smudge- & waterproof up to 8 hours
- Unique powdery texture – easy to apply
- Soft shimmer effect
- Make-Up-Shapener especially developed for this type of pen



05933

## Full Brow Liner 01

light



05934

## Full Brow Liner 02

medium



05935

## Full Brow Liner 03

dark

**For the perfect finish!** Full Brow Liners by RefectoCil fill out your eyebrows visually and give them the ideal shape.

- Texture refined with silk powder
- Longlasting – up to 10 hours
- Smudge- & waterproof
- Super-fine tip for a precise application



# Colour Match Chart



RefectoCil	<b>1</b> pure black	<b>1!</b> graphite	<b>2</b> blue black	<b>2!</b> deep blue	<b>3</b> natural brown	<b>3!</b> light brown	<b>4</b> chestnut	<b>4!</b> red							
	5-10 min	5-10 min	5-10 min	5-10 min	5-10 min	5-10 min	10 min	10-20 min							
4 N		×		×		×			×		×				
7 N		×		×											
9 N															
White															



# RefectoCil

## Tint Treatment Procedure

---

### Step 1: Preparation

- Cleanse the eye area using the **RefectoCil Micellar Eye Make-up Remover**.
- Use **RefectoCil Saline Solution** for optimum results.
- Apply either **RefectoCil Silicone Pads**, **Eye Care Pads** or **Skin Protection Scream** with **Eye Protection Papers** under the eyelashes to prevent unwanted skin staining.

### Step 2: Mix & Apply

- Mix equal part ratios of desired **RefectoCil Tint** with either the **RefectoCil Liquid** or **Cream Oxidant** in the **Browista Palette** or **Mini Application Dish**.
- Apply to brows and/or lashes using the **RefectoCil Browista Toolkit**, **Application Sticks** or **Soft Cosmetic Brush**. Use a cotton tip to remove any excess tint around the brow area or on the eyelid.

### Step 3: Application time

- 10 minutes for brows and lashes.

### Step 4: Remove Tint and Style

- Remove tint by using damp cotton rounds and luke warm water in a kidney dish. Have your client tilt her face towards the dish, remove **Protection Pad** and gently remove excess tint with water.
- Use the **RefectoCil Styling Gel** to style brows and lashes.
- Any excess **Skin Protection Cream** can be massaged around the eye area and left on as an eye cream for the client.

### *Trainer Tips!*

- If **RefectoCil Blonde Brow** has been previously used, the application time is shortened to 2-5 minutes. If tinting lashes after a **RefectoCil Eyelash Lift/Curl**, application time is shortened to 2 minutes.



# RefectoCil

## Lash Styling Treatment Procedure

---

**Step 1:** Cleanse the eye area with **RefectoCil Micellar Eye Make-up Remover** and then once more with saline solution.

**Step 2:** Ask your client to look up and use the **RefectoCil Eye Care Pads** or **Silicon Pads** to hold down the bottom lashes. Once they are secure your client can then close his/her eyes.

**Step 3:** Select the ideal **Lash Lift Pad** size depending on length of the clients lashes and desired lift effect.

**Step 4:** Apply **RefectoCil Lash Lift Glue** to the back of the lifting pads - wait approximately 5 seconds to allow glue to become 'tacky' then adhere the pad to the eyelid, as close to the lash line as possible without going over the roots of the eyelashes.

**Step 5:** Working 3-4 small sections, apply **Lash Lift Glue** to the lifting pads, waiting 5 seconds then using either the **Rose Wood Stick** or the **Lash Lifting Tool**, gently adhere lashes to the lifting pads. Separate and isolate lashes as neat and straight as possible.

**Step 6:** Once all lashes are adhered to the lifting pads, 'lock in' the tips of the lashes using extra lash lift glue. This will ensure lashes stay secure during the processing time.

**Step 7:** Dispense a pea sized amount of **Lash Perm Solution** into the **Mini Application Dish** provided. Using the **Soft Application Brush**, apply **Lash Perm Solution** from the base of the lashes and 3/4 of the way up. Do not apply solution to the tips of the lashes.

**Step 8:** Set a timer for 8 minutes. Once the minutes have passed, use a dry cotton tip to gently remove the Lash Perm Solution. Be careful not to drag the solution past the tips of the lashes.

**Step 9:** Dispense a pea sized amount of **Neutraliser** into the second **Mini Application Dish** and use the second **Soft Application Brush** to apply **Neutraliser** to the same area that the **Lash Perm Solution** was applied.

**Step 10:** Set a timer for 5 minutes. Once the 5 minute processing time has passed, use a cotton tip to remove the **Neutraliser**.

If tinting the lashes, you can tint directly onto the lifting pads once the Neutraliser has been removed from the lashes. The processing time for a lash tint after a lift is 2 minutes as the cuticle of the lashes are open.

**Step 11:** Using a kidney dish with luke warm water, ask your client to tilt her head towards the dish and gently flush the eye area. The lashes will become unstuck from the lifting pads and the lifting pads will gently come away from the eyelid.

**Step 12:** Use **RefectoCil Saline Solution** to ensure all residues are removed from the lashes. Saline will also balance the PH of the eyes.

**Step 13:** Apply **RefectoCil Styling Gel** to finish the treatment and recommend your client use the **RefectoCil Care Balm\*** 2-3 times a week at home to ensure optimum lash health.

\***RefectoCil Care Balm** must only be applied 48 hours after a lash tint or lash tint.



## Brow Lamination Treatment Procedure

---

**Step 1:** Conduct client consultation and check for contraindications.

**Step 2:** Using a cotton pad, cleanse brow area with **RefectoCil Micellar Eye Make Up Remover** and repeat with **RefectoCil Saline Solution**.

**Step 3:** Use **Browista brush** to comb brows into place

**Step 4:** Dispense a pea-sized amount of **Step 1 Power Perm** into **RefectoCil Dish**. Using **RefectoCil Application Brush**, evenly apply **Power Perm** to the brow hairs (avoiding any skin around the eyebrows). Using the spoolie/brow brush, comb brows into desired shape.

**Step 5:** Allow Step 1 Power Perm to process for 8 minutes then remove Power Perm using a dry cotton tip.

**Step 6:** Dispense a pea-sized amount of **Step 2 Neutraliser** into **RefectoCil Dish**. Evenly apply **Neutraliser** and comb brows into desired shape.

**Step 7:** Allow Step 2 Neutraliser to process for 5 minutes then remove with a damp cotton pad.

### *Trainer Tips!*

Tint brows\* with RefectoCil Tint and Oxidant and style with RefectoCil Styling Gel.

\*Reduce processing times of tint to 2-3 minutes after Brow Lamination.



# RefectoCil

## Intense Brow[n]s

---

**Step 1:** Cleanse brows using **RefectoCil Micellar Eye Make-up Remover** on a cotton round.

**Step 2:** Gently cleanse the brows, using your preferred brow shampoo. For more even, longer lasting skin stain, perform a light exfoliation using a spoolie in a circular motion.

**Step 3:** Use the **RefectoCil Brow Mapper** and the 3 point method to map out the brows accurately prior to application.

**Step 4:** Use the **Intense Primer** to thoroughly prep the brows. We recommend going both with and against the hair growth and focus on the skin to ensure an effective stain.

**Step 5:** Wait 4 minutes

**Step 6:** Using a dry cotton pad, wipe over brow area to remove Primer residue.

**Step 7:** Wait 4 minutes for the brows and skin to completely dry.

**Step 8:** Using the **Browista brush**, apply a small even layer of selected **Intense Brow(n)s** shade. For a strongly defined skin stain, ensure the colour gel is firmly and evenly pressed into the skin as well as onto the brow hairs.

**Step 9:** Using a dry cotton pad, wipe over brow area to remove Intense Brow(n) colour gel residue.

**Step 10:** Wait 4 minutes for brows to once again completely dry prior to the next step.

**Step 11:** Use a clean Browista brush to apply **Activator Gel**. Focus on working precisely as you see the colour appear and the skin stain occur.

**Step 12:** Use a cotton tip and **Intense Brow(n)s Tint Remover** to create perfect brow shape.

**Step 13:** Wait 1 minute.

**Step 14:** Using a damp cotton pad, wipe over brow area to remove Activator Gel residue.

**Step 15:** Remove any unwanted stains using a cotton tip and **Intense Brow(n)s Tint Remover**.

**Step 16:** Finish off with **RefectoCil Highlighter** and **Styling Gel** to accentuate the brows.

### *Trainer Tips!*

- \* During the drying time, ensure no “shiny” areas remain. Alternatively you can fan dry for half the suggested time.
- \* You can complete the steps again if necessary to achieve a more intense stain or correct certain areas. You do not need to do the priming step again, only Colour gel and Activator gel.
- \* Using the Browista spoolie, gently work the Primer throughout the hairs and onto the skin. We recommend using a circular rubbing motion to target the area. This same process can be used after applying the required Colour as well as after the application of Developer Gel. The objective of this technique is to obtain best penetration of Primer, Colour & Developer.
- \* For maximum stain effect, thoroughly work the primer, colour and developer throughout the area. For best results use a silicon brow spoolie with short bristles like the RefectoCil Browista Brush.
- \* Always keep your clients informed of the appropriate home care.





# RefectoCil Colour Blending

Lash and brow tinting and styling has been an integral part of beauty services for many years, however, this doesn't mean this treatment has to be mundane. These offerings are still very much on trend and the team at RefectoCil Australia wants to help lash and brow artists put colour and creativity into lash and brow treatments by creating customized tints.

Have you ever experienced a client make a grand entrance into your salon with vibrant, ravishing red hair? You can compliment this transformation using RefectoCil Blonde Brow to prepare the brows and then tint with RefectoCil Red to accentuate this celebration of your client's unique style. This is just one of the many creative ways you can use RefectoCil products.

There are 8 colours in the RefectoCil Oxidative tint range that are designed to be mixed together to create variation of colour, so there's no excuse for one shade fits all! There are also amazing staining possibilities with our NEW Intense Browns range. This range of products offer a great alternative for those clients who do not tolerate oxidative tints. The range is PPD free, vegan and cruelty free!

For best results  
always use a  
**1:1 ratio**  
of tint to oxidant

Add **Chestnut**  
to accentuate  
*warmer*  
tones

*Trainer  
Tips!*

Add **Graphite** to create  
*cooler*  
more ash based shades

This is a great way to customize  
a cooler brow tint for any  
platinum or ashed based  
blonde clients

Mix  
**Deep Blue** and **Red**  
together to create a  
*gorgeous*  
Purple tint to bring out  
green & hazel eyes

Add  
**Black** to **Natural Brown**  
for a dark brunette shade or  
**Black** to **Blue Black**  
for even darker lashes

# FAQ's

---

- **Are RefectoCil products tested on animals?**

No, RefectoCil products are not tested on animals.

- **Are RefectoCil products Vegan?**

All but 2 products are Vegan. The exceptions are:

RefectoCil Care Balm: Contains Lanolin.

RefectoCil Lash Perm Solution: Contains Keratin.

- **Is a skin patch test necessary?**

Yes, a skin test patch is necessary to perform on clients who have not had a lash tint or lash lift/curl previously. Test patches should be performed 24 hours before a treatment is carried out to ensure no reactions occur within that time frame. If the client does have a reaction or any irritations, do not carry out the treatment.

- **What is the ratio or tint to oxidant**

The tint to oxidant ratio is 1:1 (equal parts).

- **Is Blonde Brow a blonde tint colour?**

No, Blonde Brow is NOT a tint. Blonde Brow is a bleaching paste for use on the EYEBROWS ONLY.

- **What is the shelf life of the tint?**

RefectoCil tints have a 12 month shelf life from date of opening.

- **Where are RefectoCil products made?**

RefectoCil products are manufactured in Austria.

- **Is RefectoCil PPD free? (P-Phenylenediamine)**

Yes, RefectoCil tints are PPD free. They do, however, contain an ingredient from the same family - Toulene Diamine. This ingredient is much less irritation than PPD, however please ensure a skin test patch is carried out if the client has had previous irritations to PPD.

- **How many tint applications will I get from a 15ml tube or RefectoCil Tint and a 100ml bottle of Oxidant?**

You will get approximately 30 tint applications from RefectoCil 15ml tint (this may vary if colour mixing) and 160 applications from a RefectoCil 100ml Oxidant.

- **Do I need to use RefectoCil Oxidant with RefectoCil Tints?**

For guaranteed results, always use RefectoCil Oxidants to activate RefectoCil tints.

- **Should I use RefectoCil Micellar Eye Makeup Remover even if my client isn't wearing any makeup?**

Yes, RefectoCil Micellar Eye Makeup Remover not only removes makeup but also cleanses the eye area and lashes of any oil and residues to ensure a long lasting tint.

- **How should I best store my RefectoCil tints?**

RefectoCil tints are best kept stored away from direct sunlight in a dry, cool area with the cap securely on.

- **Can I perform a treatment on a client who is wearing contact lenses?**

Always ensure contact lenses are removed before performing a lash tint or styling treatment. This should be checked during client consultation.

- **What is the cost per treatment for a RefectoCil Tint?**

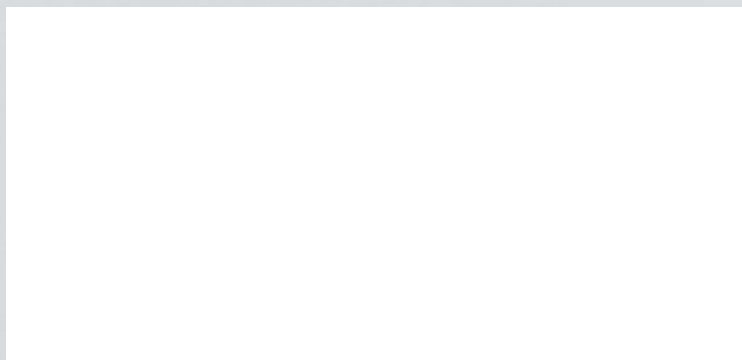
RefectoCil Tint application according to equal part ratios of tint to oxidant is 0.55c per treatment.\*

\*Based on RRP.





*Welcome  
to the world  
of perfect  
brows & lashes!*



**RefectoCil Australia**

Shop 2, 3 Grosvenor St Neutral Bay, NSW 2089. AUSTRALIA

Tel: +61 2 7200 8452

Email: [sales@refectocil.com.au](mailto:sales@refectocil.com.au)

Web: [www.refectocil.com.au](http://www.refectocil.com.au)



Follow us on:



Refectocil



@refectocilaustralia



[facebook.com/refectocilaustralia](https://facebook.com/refectocilaustralia)