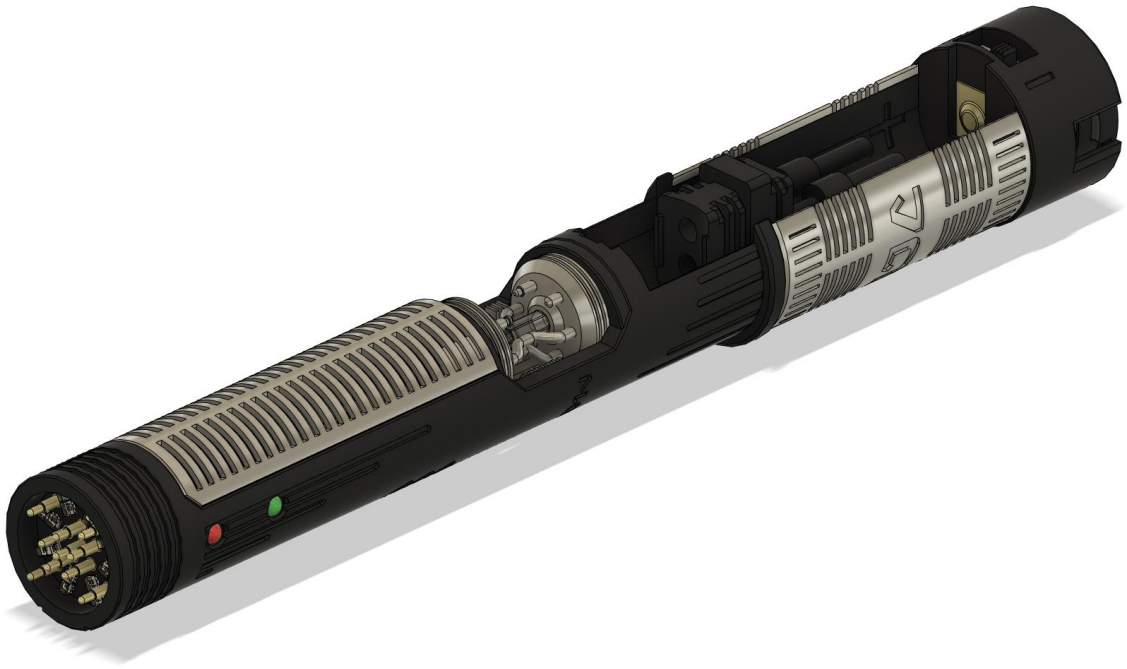


SHADOWFOIL PROPS' MASTER CHASSIS GUIDE FOR WATTO'S JUNKYARD TUSKEN SLAYER (V1 & V2)



SAMUEL STEPHENSON

SHADOWFOIL PROPS

COMPATIBLE PARTS

SOUNDBOARD	PROFFIE V2.2/V3 OR GHV3
BATTERY	18650 PROTECTED BUTTON TOP LI-ION
BATTERY CONTACTS	KEYSTONE 1010-1 (POSITIVE) AND 1016-1 (NEGATIVE)
SPEAKER	22MM BASS SPEAKER (KR/CCSABERS)
ACCENT LEDs	3MM STANDARD LED
CRYSTAL CHAMBER LEDs	2X TRIMMED WS2812B STRIP SINGLE PIXEL
NEOPIXEL CONNECTOR	LONG PIN SHTOKCUSTOMWORX NPXL V2 / V3 OR CCSABERS CONNECTORS (DIFFERENT VERSIONS OF MAIN BODY AVAILABLE ON SHAPEWAYS FOR V2 VS V3 NPXL)
SWITCHES	LOW PROFILE BRASS TACTILE SWITCHES
KILL SWITCH	3A E-SWITCH 500ASSP1M2QE
OLED	KR 128x32 OLED DISPLAY TCSS 128x32 OLED DISPLAY

ASSEMBLY

USE WIRE SNIPPERS OR AN X-ACTO KNIFE TO CUT THE SUPPORTS FROM THE SIDES OF THE SWITCH CHASSIS. THIS WILL FREE THE SWITCH CHASSIS AND PLUNGERS FROM THE MAIN BODY. THEN TRIM OFF THE SUPPORT MATERIAL TO FREE THE PLUNGERS. THE PLUNGERS SLIDE INTO THE SWITCH BODY AND SHOULD BE ABLE TO MOVE FREELY ALONG THE GUIDES. YOU MAY NEED TO CLEAN LOOSE POWDER FROM THE SWITCH CHASSIS HOLES BEFORE INSERTING THE PLUNGERS. IF THE PLUNGERS ARE TIGHT, TRY SPINNING A DRILL BIT BY HAND IN THE HOLES TO CLEAR OUT ANY BURRS OR LOOSE MATERIAL.

THE SWITCH CHASSIS IS DESIGNED TO FIT INTO THE CLAMP SECTION OF THE HILT AND THE PLUNGERS PUSH TACTILE SWITCHES INSTALLED ON THE BACK SIDE OF THE MAIN CHASSIS BODY.

