

PER FORTUNA Art. 1634

74 % Baumwolle, Cotton
26 % Polyamid, Polyamide



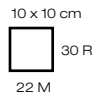
10 x 50 g



ca. 190 m
per 50 g



4-4,5



22 M



Gr. 38-40
ca. 300-350 g



36*



37*



38*



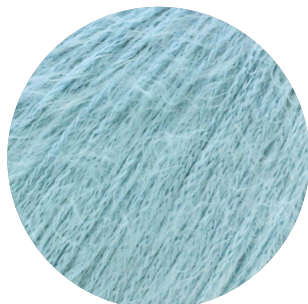
39*



40*



41*



42*



43*



44*



32



14



27



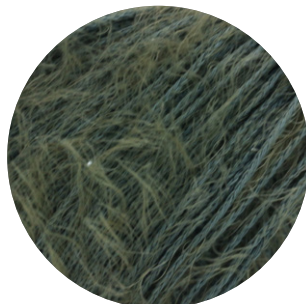
13



20



28



7



* NEU/NEW

LANA GROSSA GmbH

Ingolstädter Straße 86 · 85080 Gaimersheim · Tel. +49 (0)8458 61-0 · Fax +49 (0)8458 61-36 · www.lana-grossa.de

LANA GROSSA

PER FORTUNA Art. 1634

74 % Baumwolle, Cotton
26 % Polyamid, Polyamide



10 x 50 g



ca. 190 m
per 50 g



4-4,5



10 x 10 cm
30 R
22 M



Gr. 38-40
ca. 300-350 g



29



30



10



8



31



11



33



2



34



3



5



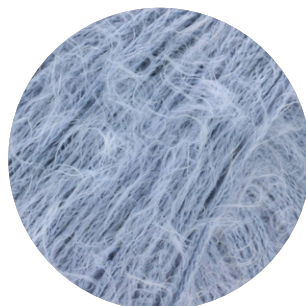
6



35



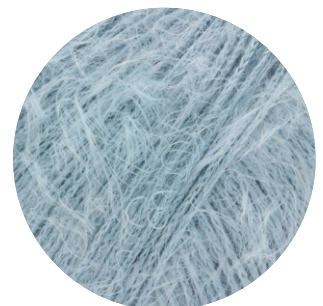
24



21



22



* NEU/NEW

LANA GROSSA GmbH

Ingolstädter Straße 86 · 85080 Gaimersheim · Tel. +49 (0)8458 61-0 · Fax +49 (0)8458 61-36 · www.lana-grossa.de

LANA GROSSA

PER FORTUNA Art. 1634

74 % Baumwolle, Cotton
26 % Polyamid, Polyamide



10 x 50 g



ca. 190 m
per 50 g



4-4,5



22 M



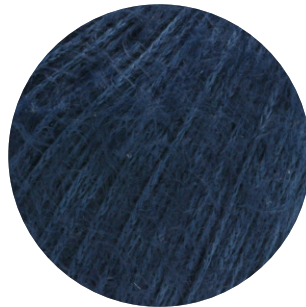
Gr. 38-40
ca. 300-350 g



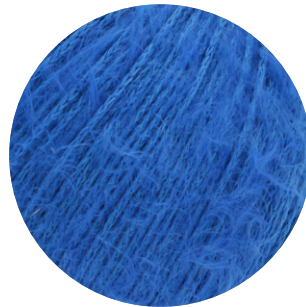
23



17



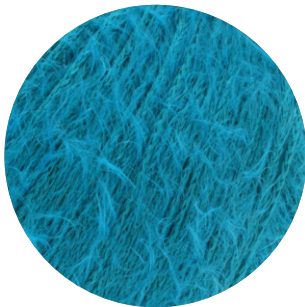
16



25



15



26



18



9



* NEU/NEW

LANA GROSSA GmbH

Ingolstädter Straße 86 · 85080 Gaimersheim · Tel. +49 (0)8458 61-0 · Fax +49 (0)8458 61-36 · www.lana-grossa.de