

PRIME[®]
Structured Cable

CATEGORY 5E UTP CMR BULK CABLES

BC1100900X

Category 5E Bulk Cable

UTP 24AWG

CMR

1000 ft.

UL verified

350 MHz

9 Colors Available



100% Bare Copper
UL444

Prime Wire & Cable, Inc.
Diamond Bar, CA 91765
primestructuredcable.com
datacenters@primewirecable.com
866-512-3415

Category 5E UTP Solid CMR Bulk Cables

Category 5E cabling solution supports the operation of 1000 BASE-T over 100 meters and are qualified for frequency up to 350 MHz. It provides bandwidth required for multi-media, broadband video, analog video and other future applications.

Standard Compliances

ETL Verified to TIA/EIA 568-C.2, UL 444, and ISO/IEC 11801
ROHS Compliant
ATM 155 Mbps
Ethernet 10BASE-T, 100BASE-TX, 100BASE-VG, 100BASE-T4
1000 Mbps 1000BASE-T Gigabit Ethernet™ (IEEE 802.3)

Sheath Physical Properties

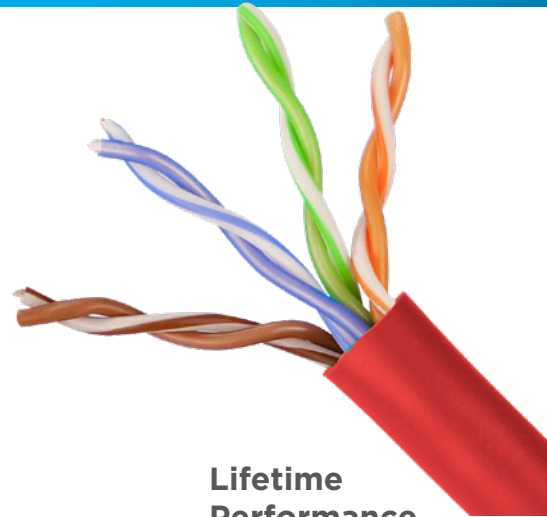
Before Aging Tensile Strength (Mpa) ≥ 13.5
Elongation(%) ≥ 150
Aging Period (C x hrs) 100 C x 24h x 7d
After Aging Tensile Strength(Mpa) ≥ 12.5
Elongation(%) ≥ 125
Cold bend(-20 ± 2 C x 4h) 8xCable O.D., No visible cracks

Electrical Characteristics (20 C)

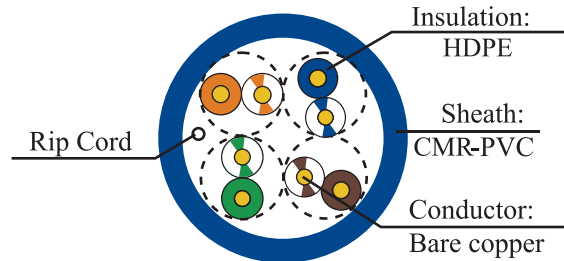
1.0-100.0MHz Impedance(Ω) 100 ± 15
100-350 MHz Impedance(Ω) reference values
1.0-350.0MHz Delay Shew (ns/100m) ≤ 45
DC Resistance (Ω/100m) max 9.5
DC Conductor Resistance Unbalance (%)max 5.0

Application

1000BASE-T Gigabit Ethernet
100BASE-T Fast Ethernet (IEEE 802.3), 10BASE-T
100 VG - AnyLAN(IEEE802.12), 155/622 Mbps ATM
350MHz Broadband Video
Voice, T1, ISDN



**Lifetime
Performance
Warranty!**



BC1100900X Electrical Performance

Freq (MHz)	Attenuation (dB/100m)	Return Loss (dB)	NEXT (dB)	PS-NEXT (dB)	ELFEXT (dB/100m)	PS-ELFEXT (dB/100m)	DELAY (ns/100m)	ACR (dB)
	Max.	Min.	Min.	Min.	Min.	Min.	Max.	
1	2.04	20.00	65.30	62.30	64.00	61.00	570.00	63.26
4	4.05	23.01	56.27	53.27	51.96	48.96	552.00	52.22
10	6.47	25.00	50.30	47.30	44.00	41.00	545.38	43.83
16	8.25	25.00	47.24	44.24	39.92	-	543.00	38.99
20	9.27	25.00	45.78	42.78	37.98	34.98	542.05	36.52
25	10.42	24.32	44.33	41.33	36.04	33.04	541.20	33.91
31.25	11.72	23.64	42.88	39.88	34.10	31.10	540.44	31.16
62.5	16.99	21.54	38.36	35.36	28.08	25.08	538.55	21.37
100	21.98	20.11	35.30	32.30	24.00	21.00	537.60	13.33
200	32.42	18.92	30.78	27.78	17.78	17.78	537.02	-
250	36.85	17.60	29.33	26.33	15.84	12.84	536.28	-
350	44.85	16.30	27.14	24.14	12.92	9.92	535.92	-