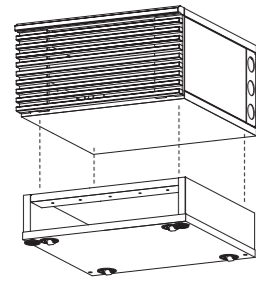
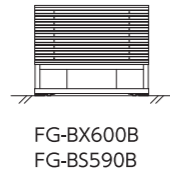


置型タイプ 《必須アイテム》ホームシアターラック+ 床置き台座

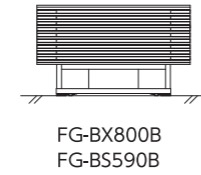


W600



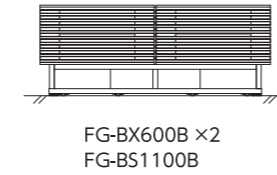
FG-BX600B  
FG-BS590B

W800



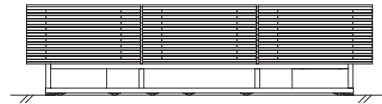
FG-BX800B  
FG-BS590B

W1200



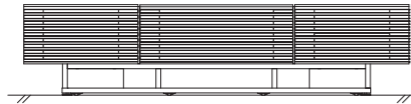
FG-BX600B ×2  
FG-BS1100B

W1800



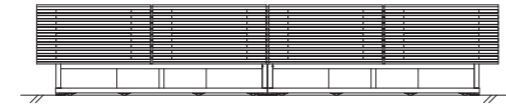
FG-BX600B ×3  
FG-BS1600B

W2000\*



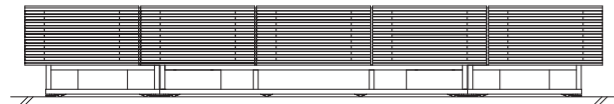
FG-BX600B + FG-BX800B + FG-BX600B  
FG-BS1600B

W2400



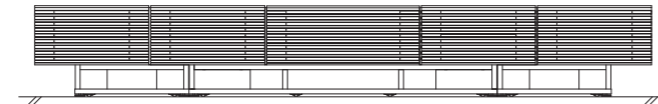
FG-BX600B ×4  
FG-BS1100B ×2

W3000



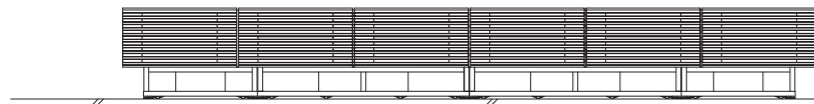
FG-BX600B ×5  
FG-BS590B + FG-BS1100B + FG-BS590B

W3200\*



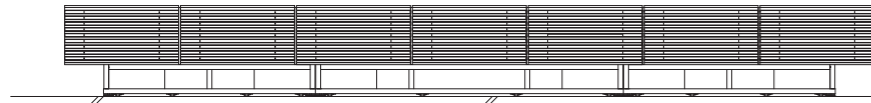
FG-BX600B ×2 + FG-BX800B + FG-BX600B ×2  
FG-BS590B + FG-BS1600B + FG-BS590B

W3600



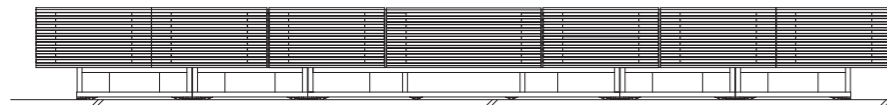
FG-BX600B ×6  
FG-BS590B + FG-BS1100B ×2 + FG-BS590B

W4200



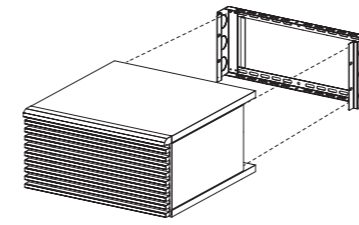
FG-BX600B ×7  
FG-BS1100B + FG-BS1600B + FG-BS1100B

W4400\*



FG-BX600B ×3 + FG-BX800B + FG-BX600B ×3  
FG-BS590B ×2 + FG-BS1600B + FG-BS590B ×2

壁掛タイプ 《必須アイテム》ホームシアターラック+ 壁掛金具

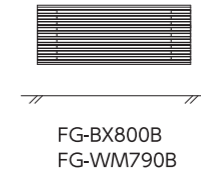


W600



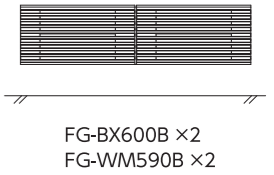
FG-BX600B  
FG-WM590B

W800



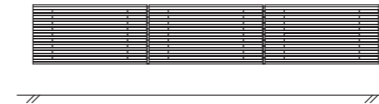
FG-BX800B  
FG-WM790B

W1200



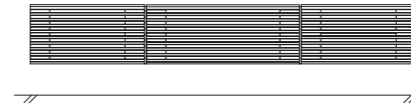
FG-BX600B ×2  
FG-WM590B ×2

W1800



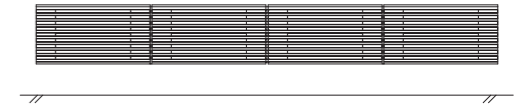
FG-BX600B ×3  
FG-WM590B ×3

W2000\*



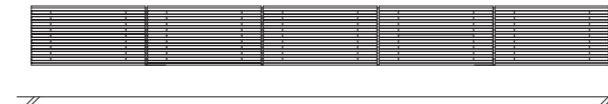
FG-BX600B + FG-BX800B + FG-BX600B  
FG-WM590B + FG-WM790B + FG-WM590B

W2400



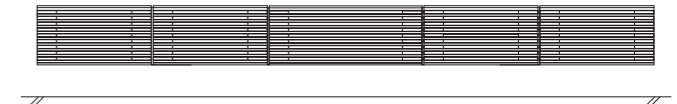
FG-BX600B ×4  
FG-WM590B ×4

W3000



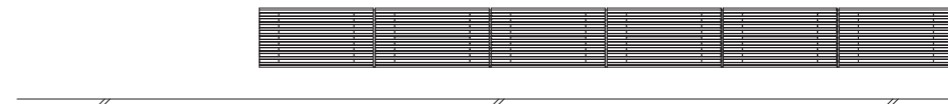
FG-BX600B ×5  
FG-WM590B ×5

W3200\*



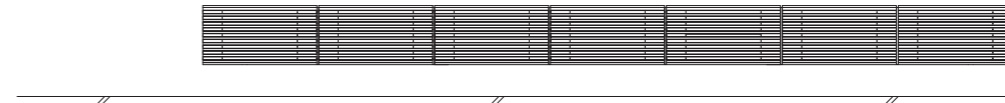
FG-BX600B ×2 + FG-BX800B + FG-BX600B ×2  
FG-WM590B ×2 + FG-WM790B + FG-WM590B ×2

W3600



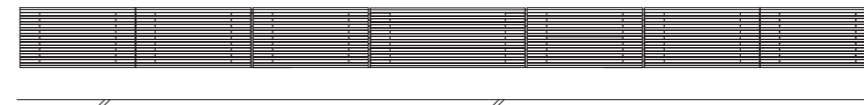
FG-BX600B ×6  
FG-WM590B ×6

W4200



FG-BX600B ×7  
FG-WM590B ×7

W4400\*



FG-BX600B ×3 + FG-BX800B + FG-BX600B ×3  
FG-WM590B ×3 + FG-WM790B + FG-WM590B ×3

● ホームシアターラックに床置き台座（別売）または壁掛金具（別売）を必ず連結してご使用ください。  
※ W2000/W3200/W4400の場合、FG-BX800Bをセンターに置き、その両側にFG-BX600Bを連結してご使用ください。

● 上記以外の組み合わせ・取付位置で使用しないでください。  
● 壁掛施工する場合は、工事専門業者と相談の上、耐荷重を満たすように壁面の補強をして取り付けてください。