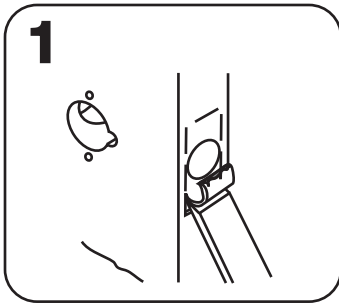
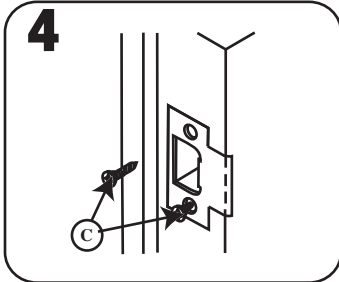


PARISI

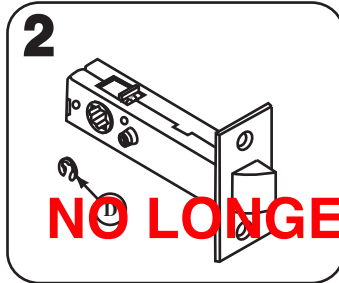
PRIVACY INSTALLATION



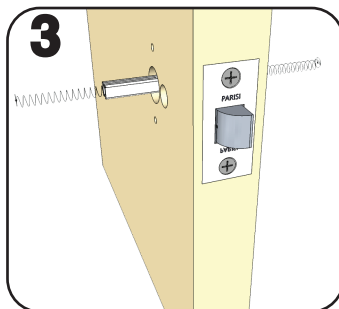
Drill holes in the door following the sequence indicated on the Template (that is: 1, then 2, then 3, then 4).
Insert Latch into the 25mm hole in the edge of the door and mark outline of faceplate.
Remove and chisel away outline until face plate fits flush.



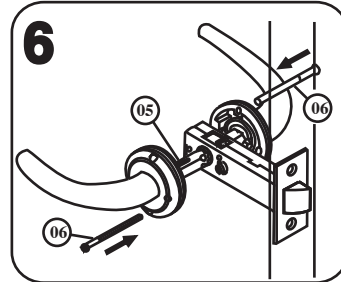
Align and drill Strike Plate directly opposite the hole in the door.
Mark outline; remove and chisel away until strike face fits flush.
Drill pilot holes and fix with screws (C).
Use appropriate screws - both wood and metal frame screws are supplied.



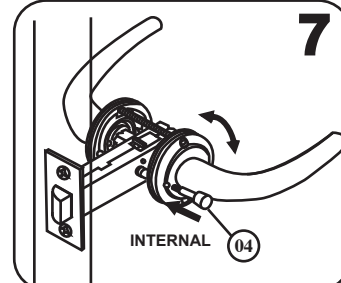
Before fixing the latch on the door ensure that the circlip (D) is on the correct side (curved face of tongue).
For INWARD opening doors (most common) the circlip should be on the side as per the diagram shown here. (Latch is pre-set-up for inward opening doors as standard.)
For OUTWARD opening doors the circlip is to be removed and fixed on the opposite side (flat side of tongue).



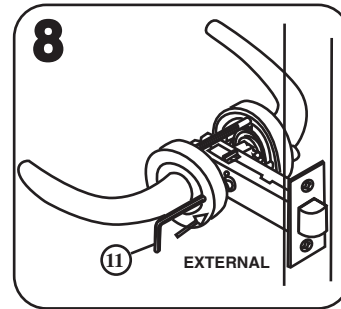
Fit the two sprung spindles by inserting the spindles fully in the latch from both sides.
They will stay on the latch to allow for the fitting of the handles.
Ensure that the wide grooves are facing downwards and line up with the grub screw hole.



Fit the levers and fix with tie bolt screws (06) as indicated.
Then fit the grub screws on lever ensuring not to overtighten.
SOME models use grub screws that require a screwdriver and not an Allen key. Fit but do not overtighten. If handle binds release the grub screw by a quarter turn.



Insert the Privacy Pin (04) in the proper hole on the inside of the door and screw in.
NOTE: do not overtighten.



It is recommended that a lubricant be used on the O-rings prior to fitting the outer rose.
Press fit the outer cover roses.

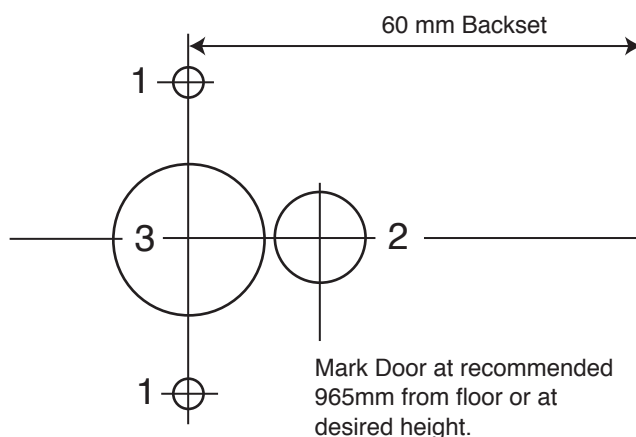
If mounting has been correctly carried out then take the following steps to ensure proper working of the privacy set.
Working with the door OPEN:
1- Push the internal privacy pin and check that the external lever is locked: Lever should not turn.
2 - Insert and push the allen key from the outside hole (11) as shown.
Outside lever should now turn.

Cut along dotted line.

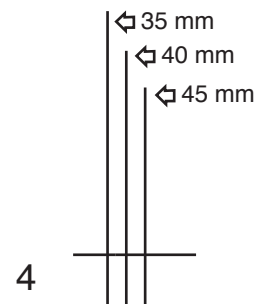
INSTALLATION TEMPLATE FOR PRIVACY SET

IMPORTANT NOTE:
Door must be drilled in sequence.
1) Two holes diameter 4mm
2) One hole diameter 12mm
3) One hole diameter 20mm
4) One hole diameter 25mm

NOTE:
All dimensions are nominal.
PRIVACY LATCH has a larger diameter cut-out than the Standard Latch



FOLD HERE AGAINST EDGE OF DOOR



MARK FOR 25mm HOLE at centre of Door Thickness