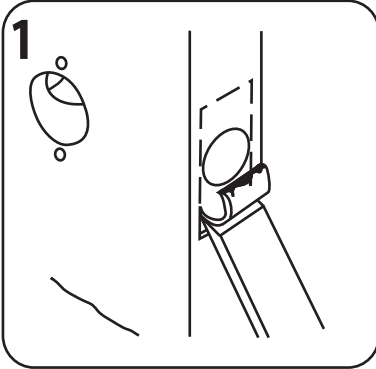
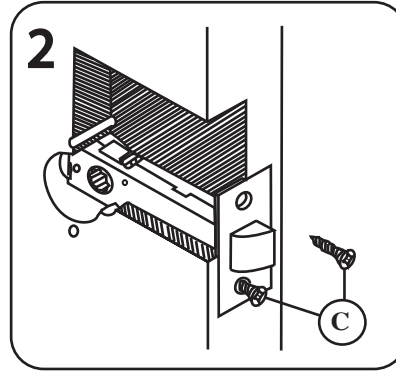


PARISI

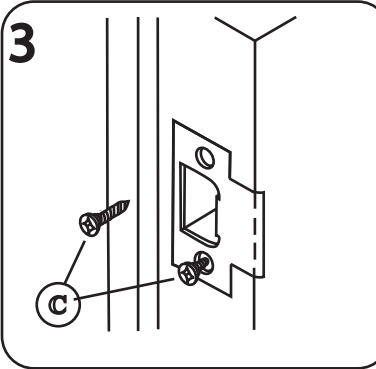
LATCH FITTING INSTRUCTIONS



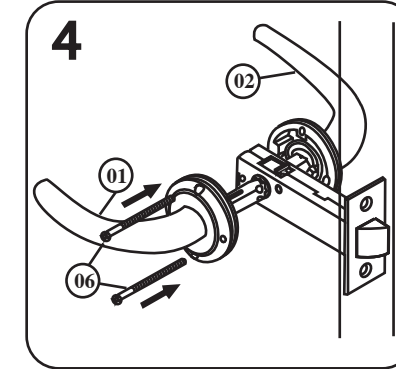
Drill holes in the door following the sequence indicated on the Template (that is: 1, then 2, then 3.) Insert Latch into the 22mm hole in the edge of the door and mark outline of faceplate. Remove and chisel away outline until face plate fits flush.



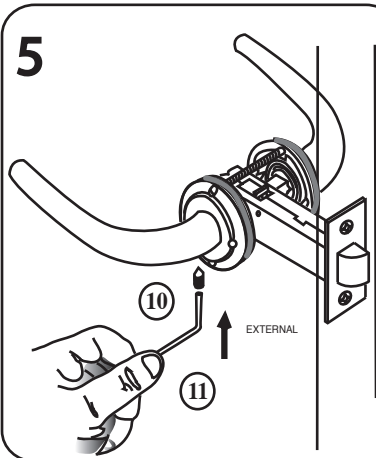
Re-insert Latch into the 22mm hole in the edge of the door, drill pilot holes, and fix with screws (C).



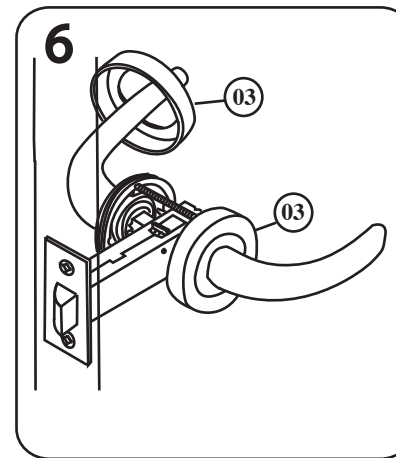
Align and drill Strike Plate directly opposite the hole in the door. Mark outline: remove and chisel away until strike face fits flush. Drill pilot holes and fix with screws (C). Use appropriate screws - both wood and metal frame screws are supplied.



Fit the levers (01), (02) and fix with tie bolt screws (06) in the Vertical or the Horizontal position depending on mechanism used. Vertical fixing - shown for illustration purposes - is standard for Latch fitting. Horizontal fixing is standard for Lock bodies.



OPTIONAL FIXING SYSTEMS
Fit the grub screw (10) into the handle using the allen key (11).
NOTE:
Do not overtighten the grub screw.
SOME models use grub screws that require a screwdriver and not an Allen key. Fit but do not overtighten. If handle binds release the grub screw by a quarter turn.



Fit the two outer roses (03) to finish the installation.

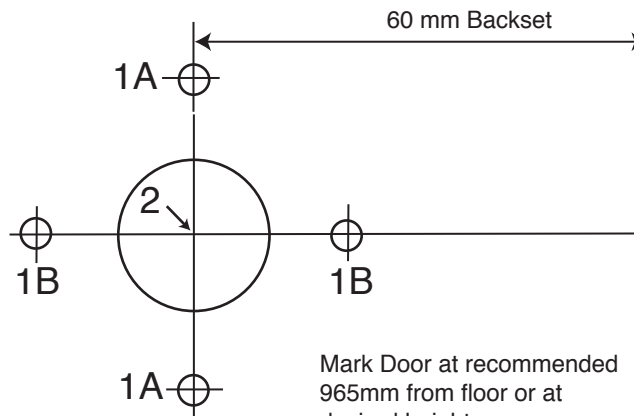
With models that use push-on outer roses it is recommended that a lubricant be used on the O-rings prior to fitting the outer rose.

Cut along dotted line.

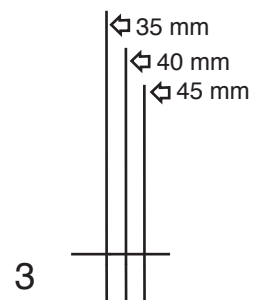
INSTALLATION TEMPLATE FOR PASSAGE SET

IMPORTANT NOTE:
Door must be drilled in sequence.
1) Two holes diameter 4mm
(Use the 1A or 1B as required, there is no need to do both.)
2) One hole diameter 20mm
3) One hole diameter 22mm

NOTE:
All dimensions are nominal.



FOLD HERE AGAINST EDGE OF DOOR



MARK FOR 22 mm HOLE at centre of Door Thickness