

# BRAND NEW LODDON VALLEY LAMB



## 100% Pure Pasture Victorian Lamb. Exclusive to Gamekeepers.

At Loddon Valley, they firmly believe that great Australian lamb starts with the land. That's why they choose their partners where the richest and most fertile land can be found across Victoria. These farms adhere to the highest levels of animal husbandry, sustainability, and producing the best quality lamb.

- Bred specifically for restaurants. Optimal size at 23-26kg.
- Micro-marbling for exceptional flavour and tenderness.
- Gamekeepers source the whole body, offering flexibility and consistency.

## Dry-Aged Loddon Valley Lamb

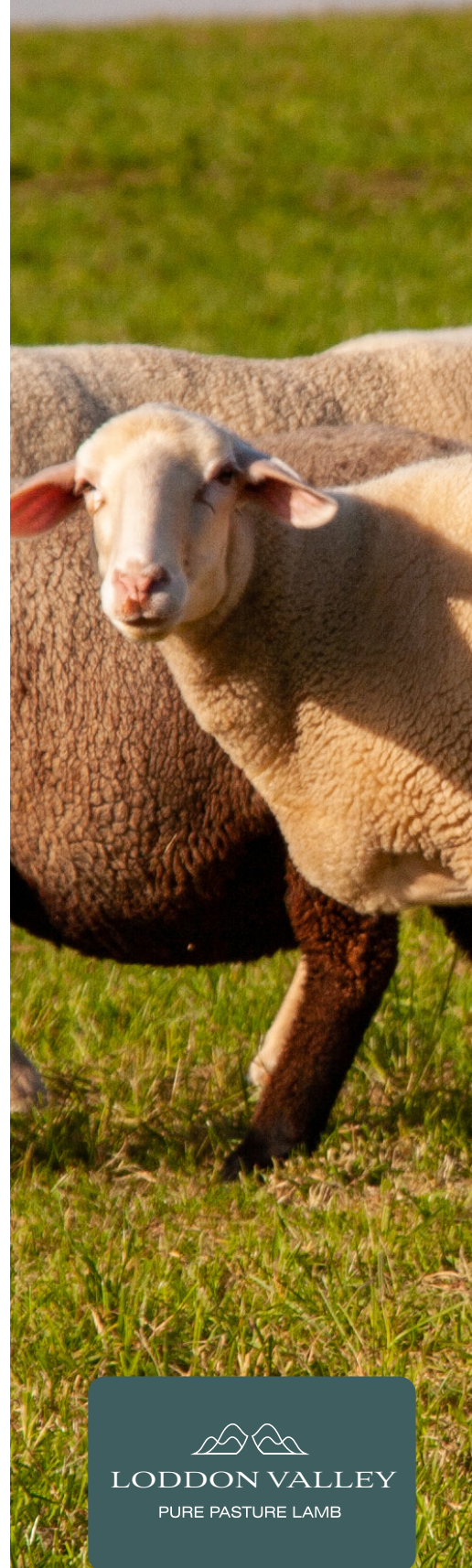
Gamekeepers offers a unique and specialised dry-ageing lamb program. Selected Loddon Valley cuts will undergo a 35-day dry ageing process, resulting in a rich, buttery, and milky flavour profile.



CODE	DRY AGED LAMB
DALL	Dry Aged Loddon Valley Lamb Loin Cap On
DALL1	Dry Aged Loddon Valley Lamb Loin Bone In Cap On
DALR	Dry Aged Loddon Valley Lamb Rump Cap On
DALRA	Dry Aged Loddon Valley Lamb Rack Cap On

CODE	LAMB CUTS
LBAC1	Loddon Valley Lamb Backstrap Cap On
LBAC	Loddon Valley Lamb Backstrap Denuded
LBAC2	Loddon Valley Lamb Backstrap On The Bone Cap On
LBCH	Loddon Valley Barnsley Chop
LBON	Loddon Valley Lamb Bones 15kg
LBRI / LBRI1	Loddon Valley Lamb Brisket / Bone Out
LCUT	Loddon Valley Lamb Cutlet 20 / Tray
LCUT1	Loddon Valley Lamb Cutlet Cap On 10 / Tray
LDIC	Loddon Valley Lamb Diced
LFIL	Loddon Valley Lamb Eye Fillet
LFAT	Loddon Valley Lamb Fat
LFQC	Loddon Valley Lamb Forequarter Chop
LFSH	Loddon Valley Lamb Forequarter Shank

All cuts subject to availability.



[www.loddonvalleylamb.com.au](http://www.loddonvalleylamb.com.au)

# BRAND NEW LODDON VALLEY LAMB



**GAMEKEEPERS**  
MEAT & GAME SPECIALISTS

CODE	LAMB CUTS
LBAR	Loddon Valley Lamb Full Barrel
LHSH	Loddon Valley Lamb Hindquarter Shank
LLEG1	Loddon Valley Lamb Leg Boned
LLEG2	Loddon Valley Lamb Leg Boned And Tied
LLEC	Loddon Valley Lamb Leg Easy Carve
LLEG	Loddon Valley Lamb Leg On The Bone
LNOI	Loddon Valley Lamb Loin Rolled And Tied (Noisette)
LMIN	Loddon Valley Lamb Mince
LNEC	Loddon Valley Lamb Neck
LNEC1	Loddon Valley Lamb Neck Bone Out
LNFI	Loddon Valley Lamb Neck Fillet
LNEC2	Loddon Valley Lamb Neck Split
LOBU	Loddon Valley Lamb Osso Bucco
LRAC2 / 3 / 4 / 6	Loddon Valley Lamb Rack / 2 pts / 3 pts / 4 pts / 6 pts
LRACO	Loddon Valley Lamb Rack Cap On 8 pts Frenched
LRIB	Loddon Valley Lamb Ribs
LRCO	Loddon Valley Lamb Rump Cap On
LRCO1	Loddon Valley Lamb Rump Denuded
LSAD	Loddon Valley Lamb Saddle Bone In
LSAD1	Loddon Valley Lamb Saddle Bone Out
LSBA	Loddon Valley Lamb Shoulder Banjo
LSHO	Loddon Valley Lamb Shoulder Bone In
LSHO1	Loddon Valley Lamb Shoulder Boneless
LSHOEC	Loddon Valley Lamb Shoulder Easy Carve
LSHOY	Loddon Valley Lamb Shoulder Oyster
LSHOY1	Loddon Valley Lamb Shoulder Oyster Boneless
LSRA	Loddon Valley Lamb Shoulder Rack (4 pts / Rack)
LSHO2	Loddon Valley Lamb Shoulder Rolled And Tied
LSSQ	Loddon Valley Lamb Shoulder Square Cut
LLCH	Loddon Valley Lamb T-Bone (Loin Chop)
LTRI	Loddon Valley Lamb Trim
LWHO	Loddon Valley Lamb Whole

All cuts subject to availability.

## Contact Us:

7 Edgecombe Court, Moorabbin, VIC 3189  
 servicedesk@gamekeepersmeat.com.au | Phone: 03 9555 7000  
[gamekeepersmeat.com.au](http://gamekeepersmeat.com.au)



**LODDON VALLEY**  
PURE PASTURE LAMB

[www.loddonvalleylamb.com.au](http://www.loddonvalleylamb.com.au)

