



Toujours à la recherche de nouvelles technologies, nous avons développé des supports techniques et processus d'impressions propres à vos besoins de l'orthopédie.

Nous travaillons ainsi en étroite collaboration avec vous pour sublimer et appliquer vos personnalisations avec un résultat optimal !

Du motif sélectionné parmi nos catalogues, jusqu'au motif créé sur-mesure, ils sont tous imprimables sur nos différentes matières !

Always looking for new technologies, we have developed technical support and printing process to answer to your own orthopedic needs.

We work then in close partnership with you to sublime and apply your customization with an optimal result !

From selected designs in our catalogues, to the custom design, there all are printable on different materials !



SOMMAIRE **SUMMARY**

NOS PRODUITS POUR LA PROTHÈSE	4	OUR PRODUCTS «PROTHESIS»
NOS PRODUITS POUR L'ORTHÈSE	6	OUR PRODUCTS «ORTHESIS»
NOS OFFRES	8	OUR OFFERS
COMMENT ÇA MARCHE ?	9	HOW DOES IT WORK ?
COLLECTION MOTIFS	10	PATTERN COLLECTION





**DES MATÉRIAUX
INNOVANTS
POUR
LA PROTHÈSE**



**INNOVATIVE
MATERIALS
FOR
PROTHESIS**

GAMME MAILLE

LYCRA

Le lycra est compatible pour la lamination ou le garnissage

Largeur 150 cm

Poids 250 g/m²

Bi-extensible

Retransmet les couleurs éclatantes

Minima de commande : 1 mètre sur 150 cm de large

ANTI-ABRASIF

L'anti-abrasif est compatible pour le garnissage et la fabrication de manchon

Largeur 150 cm

Poids 175 g/m²

Résistant au boulochage

Bi-extensible

Retransmet les couleurs éclatantes

Fil recyclé

Minima de commande : 1 mètre sur 150 cm de large

TISSU DE STRATIFICATION

Le tissu de stratification est compatible pour la lamination et le prepreg

Largeur 150 cm

Poids 123 g/m²

Mono-extensible

Absorbe facilement la résine légère

Minima de commande : 1 mètre sur 150 cm de large

RANGE JERSEY

LYCRA

Lycra is compatible for lamination or lining

• *Width 150 cm*

• *Weight 250 g/m²*

• *Bi-extensible*

• *Transmits bright colours*

Minimum order: 1 meter on 150 cm of width

ANTI-ABRASIF

Anti-Abrasive is compatible for lamination or lining

• *Width 150 cm*

• *Weight 175 g/m²*

• *Resistant to pilling*

• *Bi-extensible*

• *Transmits bright colours*

• *Recycled wire*

Minimum order: 1 meter on 150 cm of width

LAMINATION FABRIC

Lamination fabric is compatible for lamination or prepreg

• *Width 150 cm*

• *Weight 123 g/m²*

• *Mono-extensible*

• *Absorb easily light resin*

Minimum order: 1 meter on 150 cm of width

DES MATÉRIAUX INNOVANTS POUR L'ORTHÈSE

INNOVATIVE MATERIALS FOR ORTHESIS



GAMME PAPIERS TRANSFERTS

PAPIER TRANSFERT

Papier transfert testé et approuvé pour les appareillages orthopédiques, en format large pour une application plus simple pour le grands appareillages

Largeur 150 cm
Poids 45 g/m²
Polyéthylène
Polypropylène

- *Width 150 cm*
- *Weight 45 g/m²*
- *Polyethylene*
- *Polypropylene*

Minima de commande : 1 mètre sur 150 cm de large

PAPIER TRANSFERT INT

Papier transfert testé et approuvé pour les appareillages orthopédiques, en format plus étroit pour un transport à l'international et un stockage plus simple

Largeur 76 cm
Poids 66 g/m²
Polyéthylène
Polypropylène

- *Width 76 cm*
- *Weight 66 g/m²*
- *Polyethylene*
- *Polypropylene*

Minima de commande : 10 mètre sur 76 cm de large

RANGE TRANSFER PAPER

TRANSFER PAPER

Transfer paper tested and approved for orthopedic devices in large format for easier application for large devices

- *Width 150 cm*
- *Weight 45 g/m²*
- *Polyethylene*
- *Polypropylene*

Minimum order: 1 meter on 150 cm of width

TRANSFER PAPER INT

Transfer paper tested and approved for orthopedic devices, in a narrower format for international transport and easier storage

- *Width 76 cm*
- *Weight 66 g/m²*
- *Polyethylene*
- *Polypropylene*

Minimum order: 10 meters on 76 cm of width

GAMME TISSUS 3D

Une gamme idéale pour le garnissage, lavable en machine, résistant et de haute qualité

3D NU

Largeur 140 cm
Poids 270 g/m²

Minima de commande : 1 mètre sur 140 cm de large

3D NU MAILLE GRATTÉE

Largeur 140 cm
3D Nu : 270 g/m²
Maille grattée PA : 140 g/m²
Mousse PU : 27 kg/m³

Minima de commande : 10 mètres sur 140 cm de large

3D THERMOFORMABLE

Largeur 140 cm
3D Nu : 270 g/m²
Mousse PE : 33 kg/m³

Minima de commande : 10 mètres sur 140 cm de large

RANGE 3D FABRIC

Perfect for lining, machine-washable, resistant and of high-quality

3D FABRIC

- *Width 140 cm*
- *Weight 270 g/m²*

Minimum order 1 meter on 140 cm of width

SCRAPPED MESH 3D

- *Width 140 cm*
- *3D Fabric : 70 g/m²*
- *Scrapped mesh PA : 140 g/m²*
- *Foam PU : 27 kg/m³*

Minimum order: 10 meters on 140 cm of width

THERMO 3D

- *Width 140 cm*
- *3D Fabric : 270 g/m²*
- *Foam PE : 33 kg/m³*

Minimum order: 10 meters on 140 cm of width

VOUS ÊTES **YOU ARE**
UNIQUE, **UNIQUE !**
VOTRE **YOUR**
APPAREILLAGE **ORTHOPEDIC**
ORTHOPÉDIQUE **DEVICE**
AUSSI **TOO**

Parce que tout objet mérite son design, nous vous proposons des services de customisation de qualités, abordables et adaptés pour tous types d'appareillages orthopédiques. De la réalisation du design jusqu'à l'impression, notre équipe met tout en œuvre pour fournir un rendu optimal à ses utilisateurs, tout en travaillant en direct avec l'orthoprothésiste. Il n'a jamais été aussi simple et rapide de customiser ! C'est pourquoi nous proposons 3 niveaux de personnalisations accessibles :

Because every object deserves its design, we offer quality customization services, affordable and adapted for all orthopedic devices. From realisation through design to printing, our team gives its best to provide an optimal rendering, working simultaneously time with the orthoprothesist. Customization has never been easier and faster before ! That's the reason why we suggest you to choose between 3 levels of customization available :

U CATALOG

C'est le choix parmi plus de 260 motifs de notre catalogue classé par univers !
This is the choice among more than 250 patterns, classified by universe !

U ADAPT

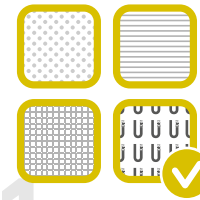
C'est l'adaptation d'une image créée par l'utilisateur que nous adaptons aux dimensions de son appareillage !
This is the creation of a design by a user, that can be adapted by our team on the prosthesis !

U CUSTOM

C'est réaliser le souhait d'un utilisateur par la création sur mesure d'un motif lui appartenant à vie !
Is the possibility to make the user's dream come true by creating a custom design, belonging to him for life !

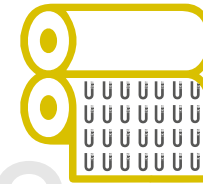
* Nos motifs et designs "sur-mesure" sont imprimables sur toutes nos matières aux finitions qualitatives : Gamme papiers transferts / Tissu de stratification / Lycra / Gamme tissus 3D

COMMENT **HOW DOES**
ÇA MARCHE ? **IT WORK ?**



1 CHOISISSEZ VOTRE
CUSTOMISATION
PARMI
LES 3 SERVICES

*Choosing
my customization
between
the 3 services !*



2 NOUS TRAITONS
VOTRE COMMANDE
ET NOUS VOUS
L'EXPEDIONS

*We produce
and send it for you.*



3 RECEVEZ VOTRE
CUSTOMISATION
ET APPLIQUEZ-LA
SUR L'APPAREILLAGE

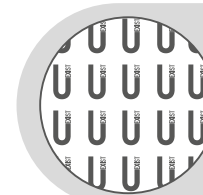
*You can apply it
on the orthopedic
device !*



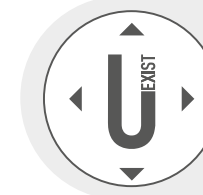
4 L'APPAREILLAGE
EST CUSTOMISÉ.

*The orthopedic
device is now
customized.*

MOTIF ALL-OVER **PATTERN ALL-OVER**
OU PLACÉ **OR PLACED**



Le motif all-over est simple en placement !
Il se répète à l'infini, adapté pour l'univers des appareillages !
*The all-over pattern is very simple to fix on the device!
It repeats itself ad infinitum !
Adaptable on any orthopedic devices !*



Le motif placé peut être adapté à l'échelle de votre appareillage, en nous transmettant simplement : la hauteur, circonférences distale, proximale et le sens !
The placed pattern can be scaled on your device. You just have to give us the height, distal and proximal circumferences and direction !

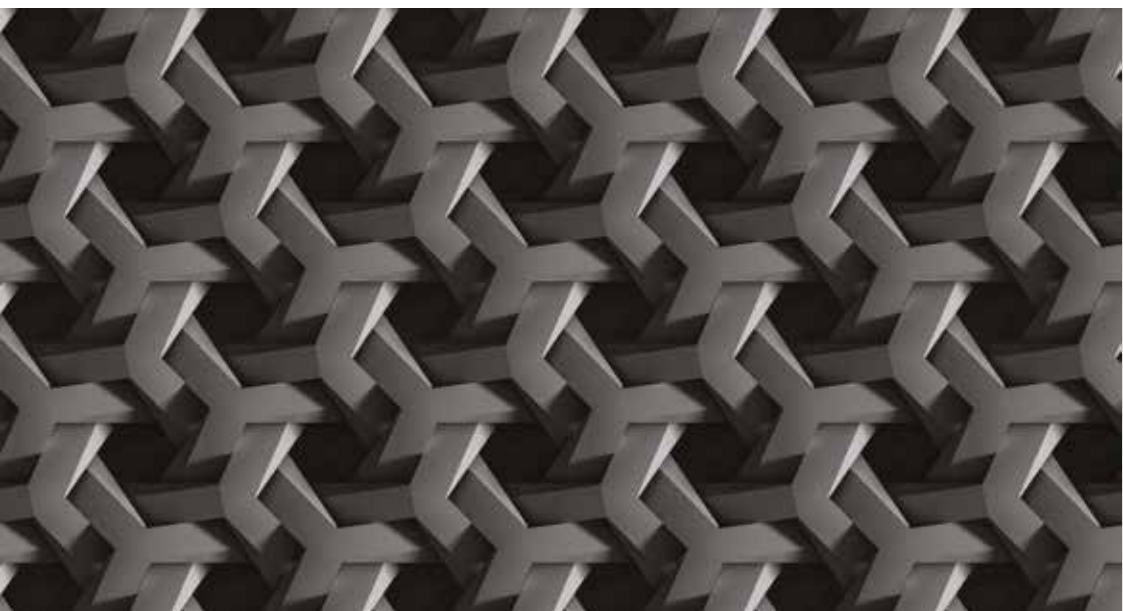
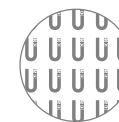
U-EXIST
COLLECTION
3D & GRAPHIK





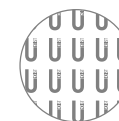
**U-3D001
WHITE ROTIN**

© U-EXIST



**U-3D002
BLACK ROTIN**

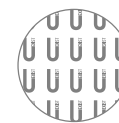
© U-EXIST





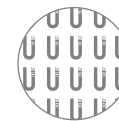
**U-3D003
FLOWER**

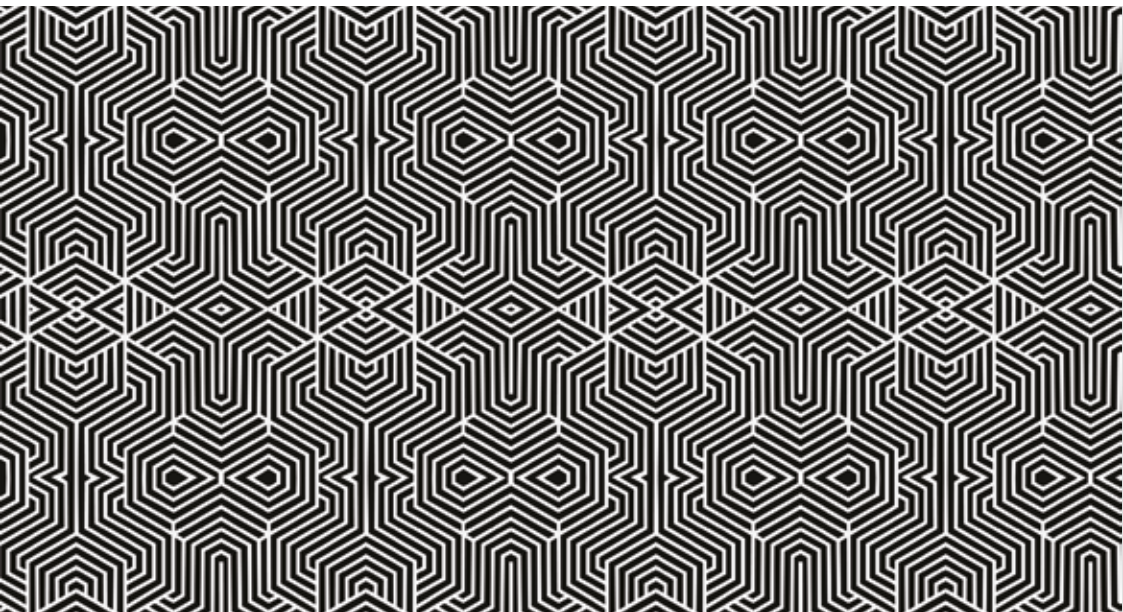
© U-EXIST



**U-3D004
COLOR
FLOWER**

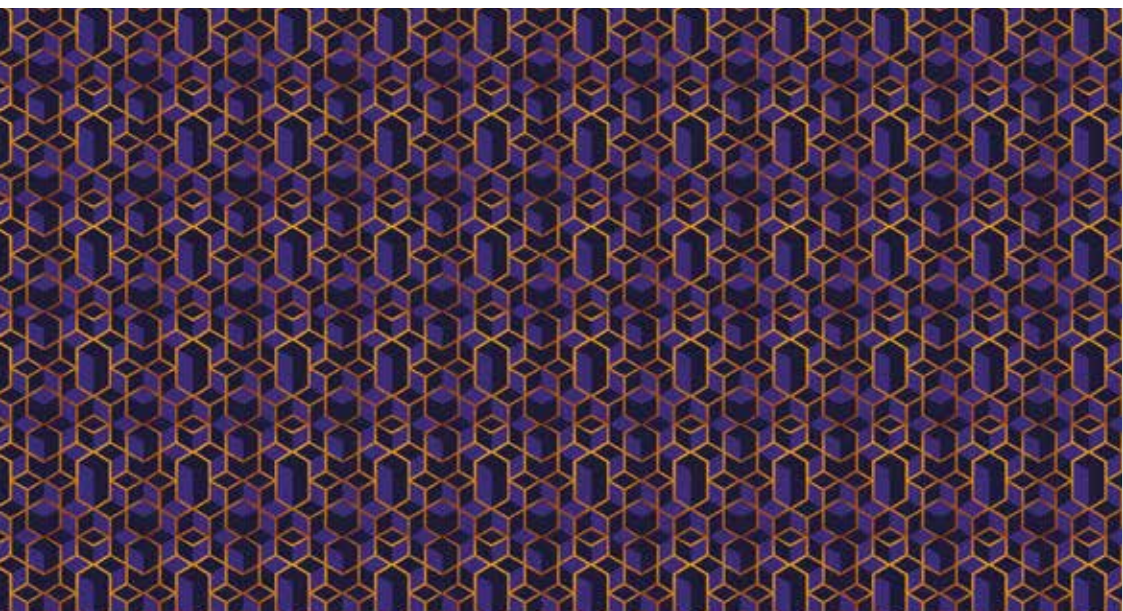
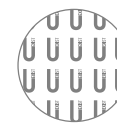
© U-EXIST





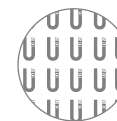
**U-3D005
LABYRINTHE**

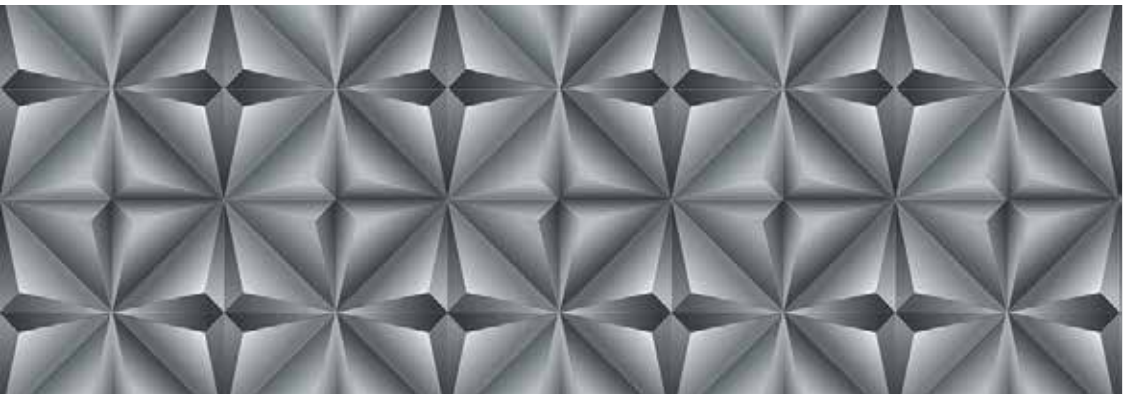
© U-EXIST



**U-3D006
GOLD CUBIK**

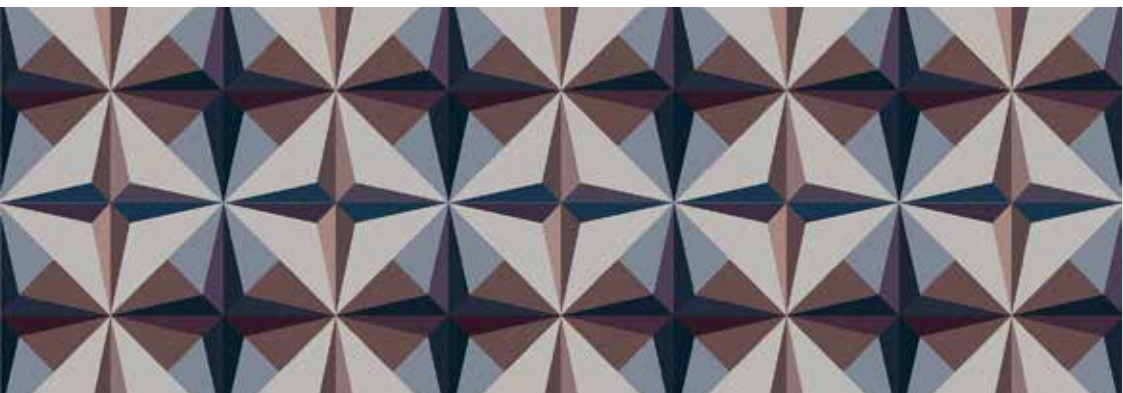
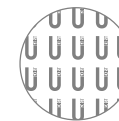
© U-EXIST





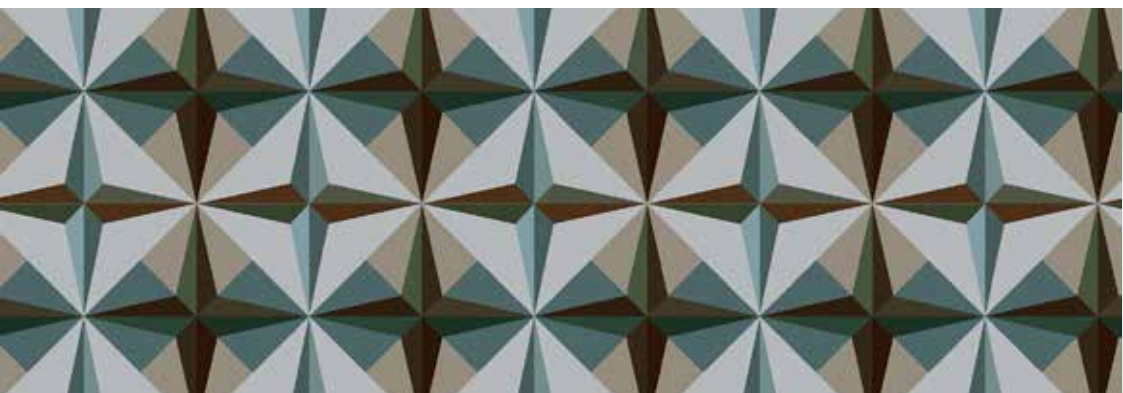
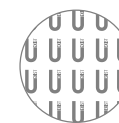
**U-3D007
CAPITON**

© U-EXIST



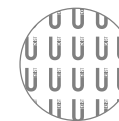
**U-3D008
CAPITON
AUTUMN**

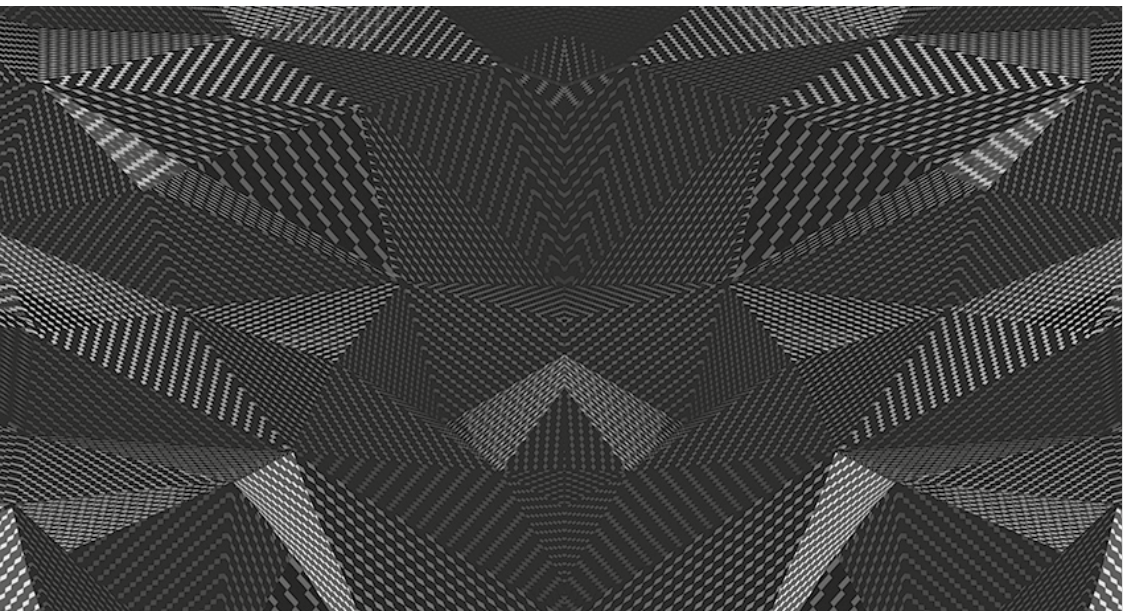
© U-EXIST



**U-3D009
CAPITON
SUMMER**

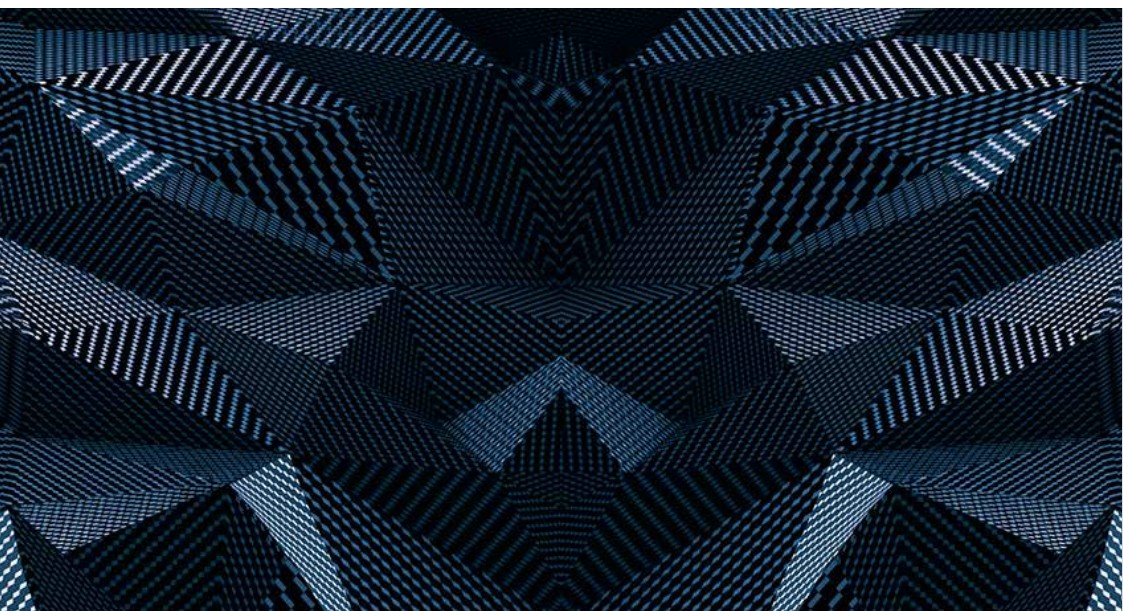
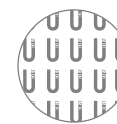
© U-EXIST





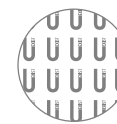
**U-3D010
CARBON
FRACTAL
BLACK**

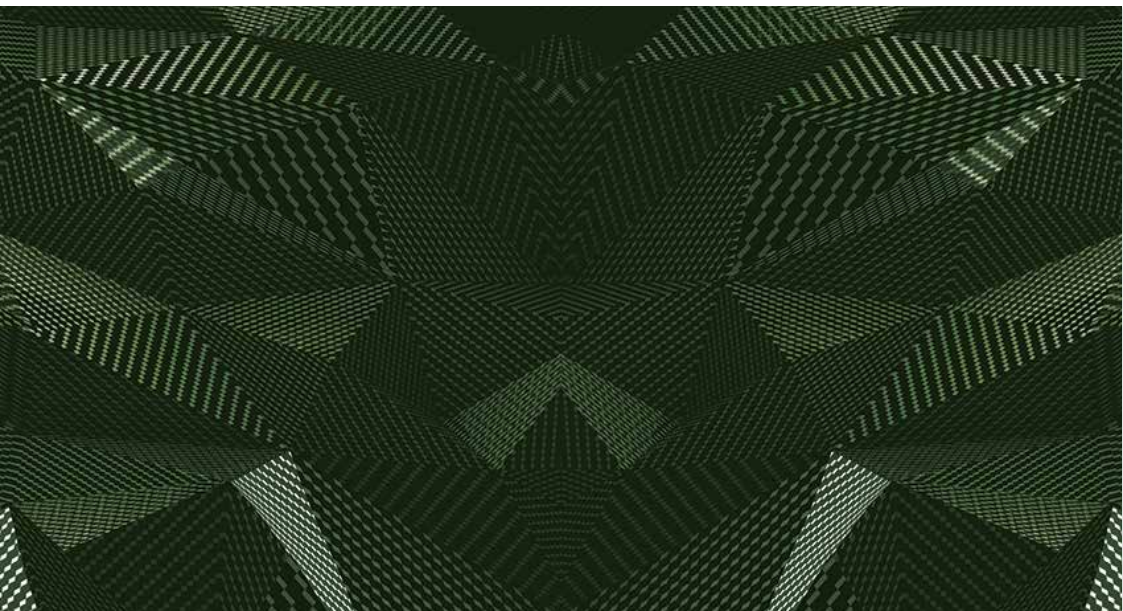
© U-EXIST



**U-3D011
CARBON
FRACTAL
BLUE**

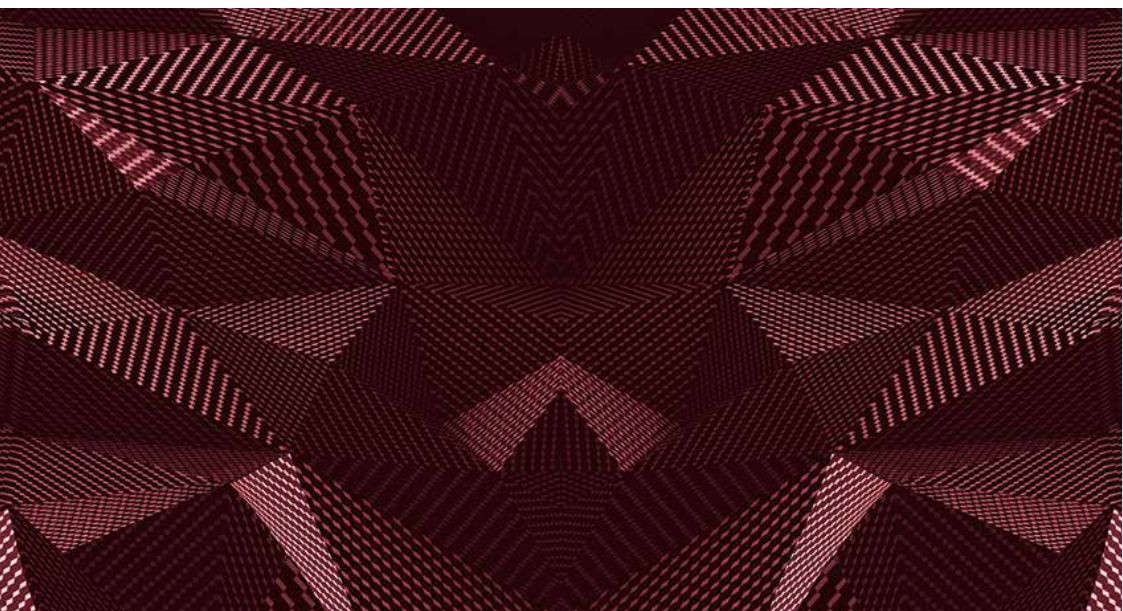
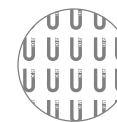
© U-EXIST





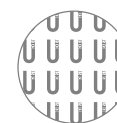
**U-3D012
CARBON
FRACTAL
GREEN**

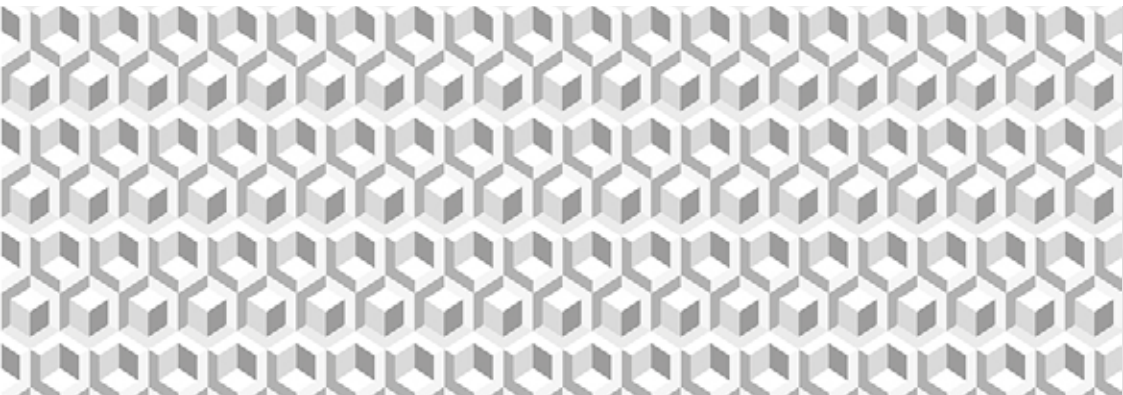
© U-EXIST



**U-3D013
CARBON
FRACTAL
PINK**

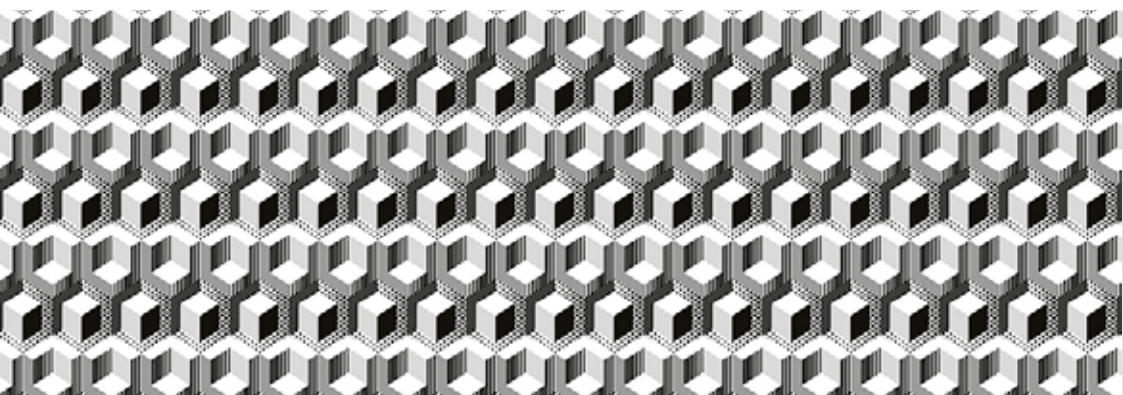
© U-EXIST





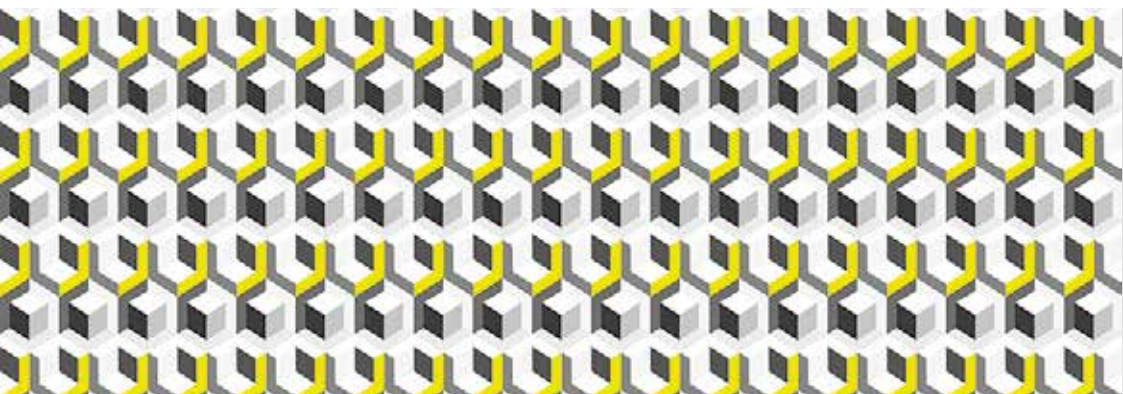
**U-3D014
THE CUBE**

© U-EXIST



**U-3D015
THE POP
CUBE**

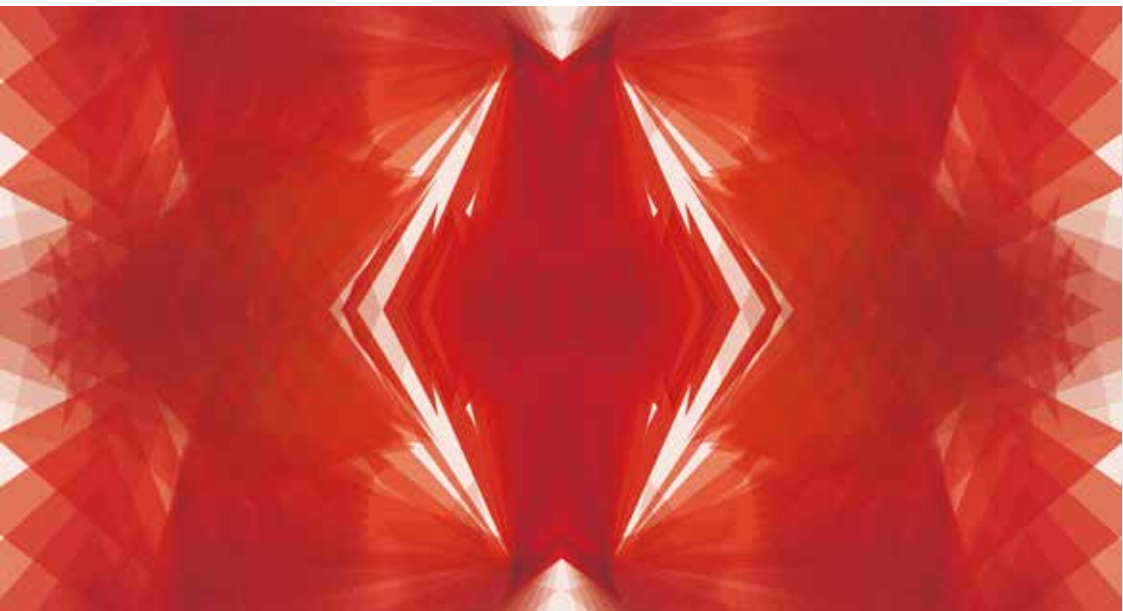
© U-EXIST



**U-3D016
THE YELLOW
CUBE**

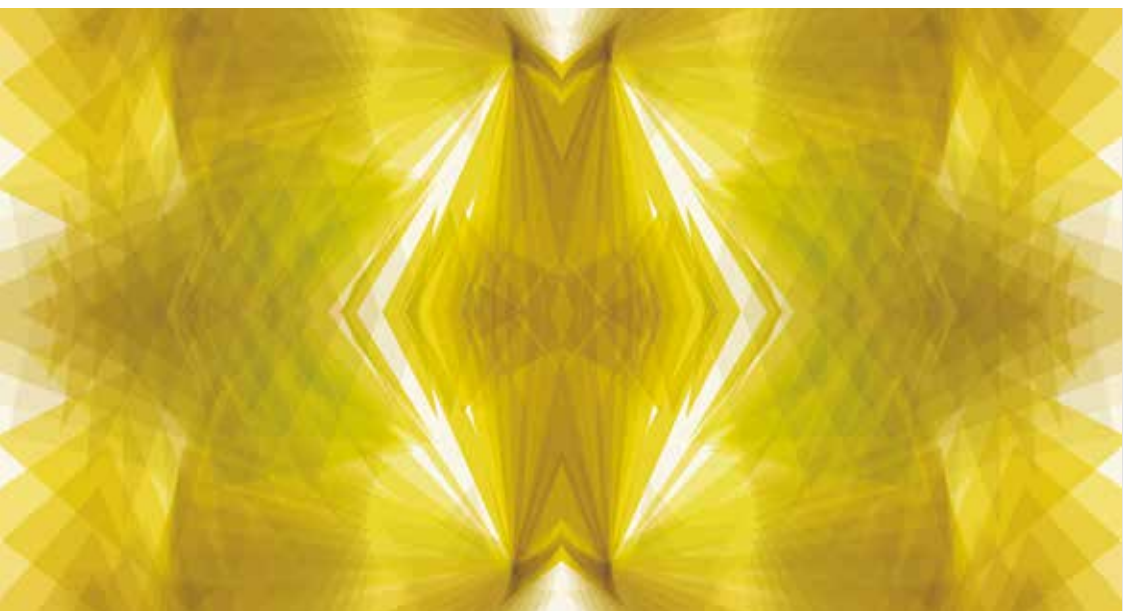
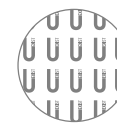
© U-EXIST





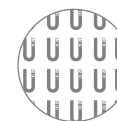
**U-3D017
RED SPECTRE**

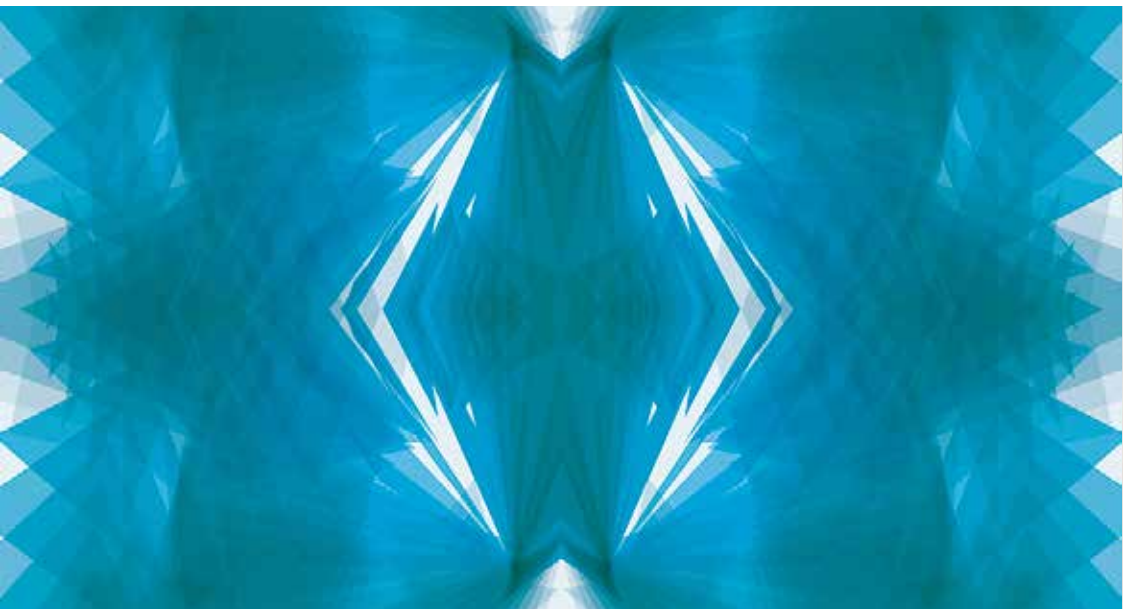
© U-EXIST



**U-3D018
GOLD
SPECTRE**

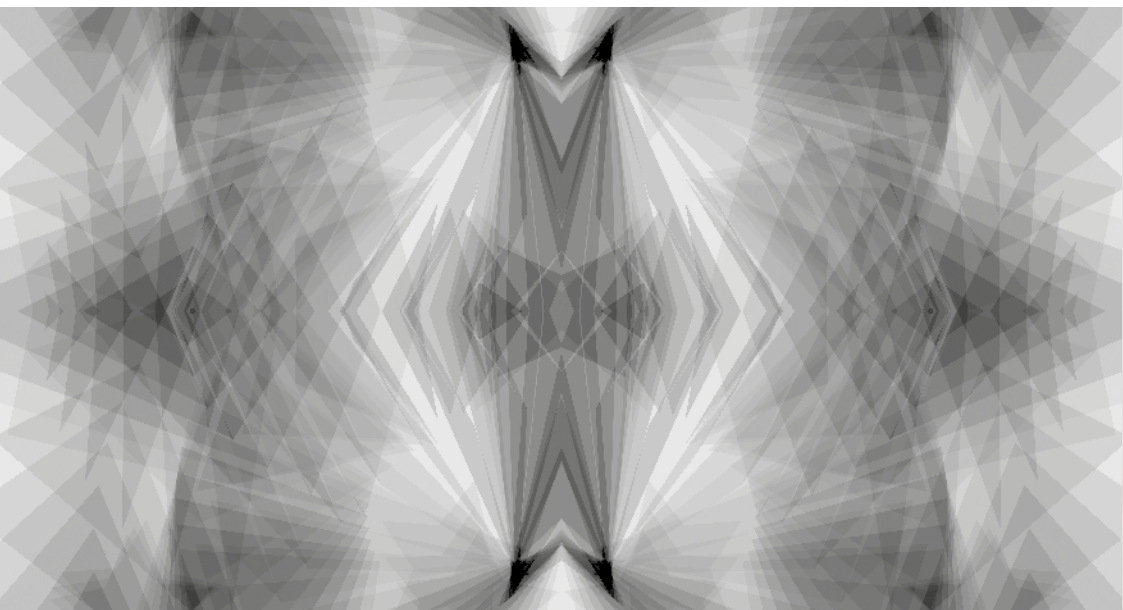
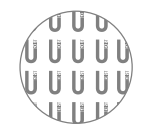
© U-EXIST





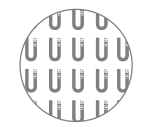
U-3D019
BLUE
SPECTRE

© U-EXIST



U-3D020
BLACK
SPECTRE

© U-EXIST





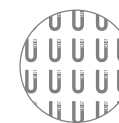
**U-FL002
SPACE MIND**

© FLESH



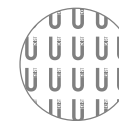
**U-FL004
SUMMER
REMEMBER**

© FLESH



**U-FL005
CALL ME
CHERRY**

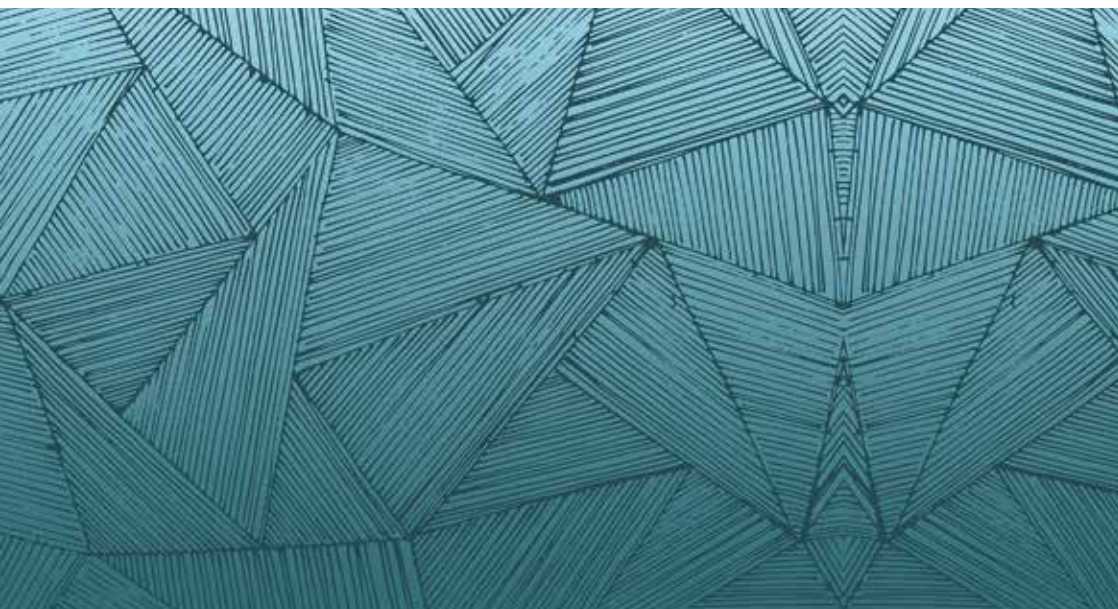
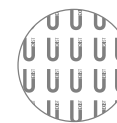
© FLESH





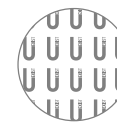
**U-FL003
SNOW HIGHT**

© FLESH



**U-UE005
TANGRAM**

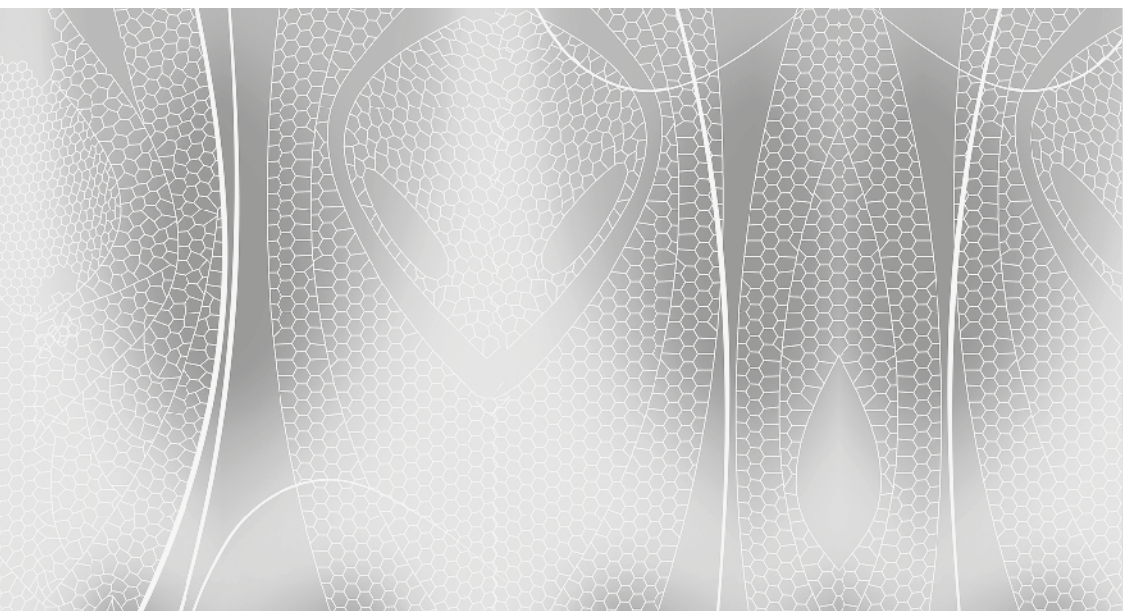
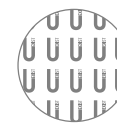
© U-EXIST





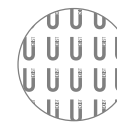
**U-UE002
LINES**

© U-EXIST



**U-UE001
LIBELLULE**

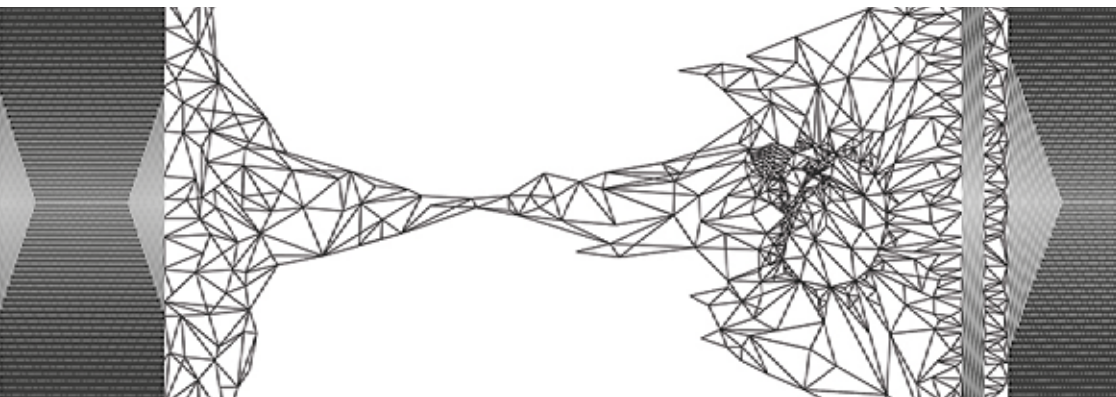
© U-EXIST





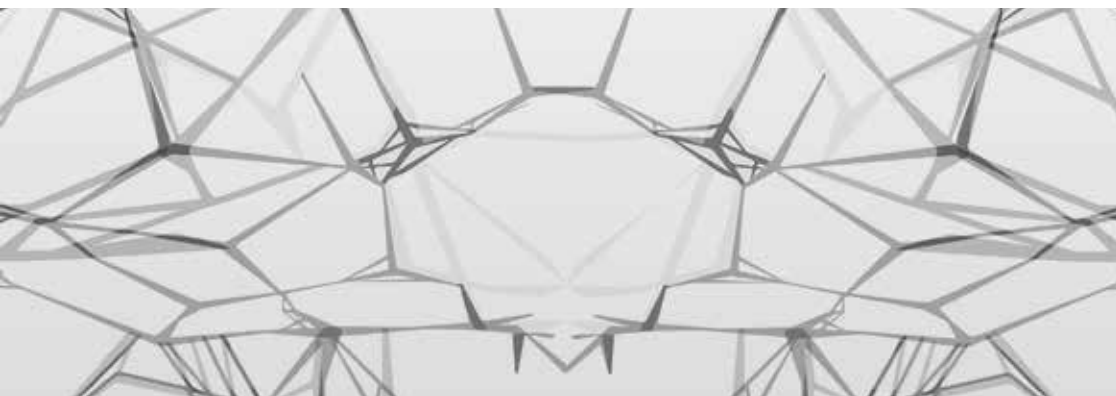
**U-NY001
MARIA**

© NUMA



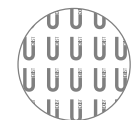
**U-UE007
VANITE**

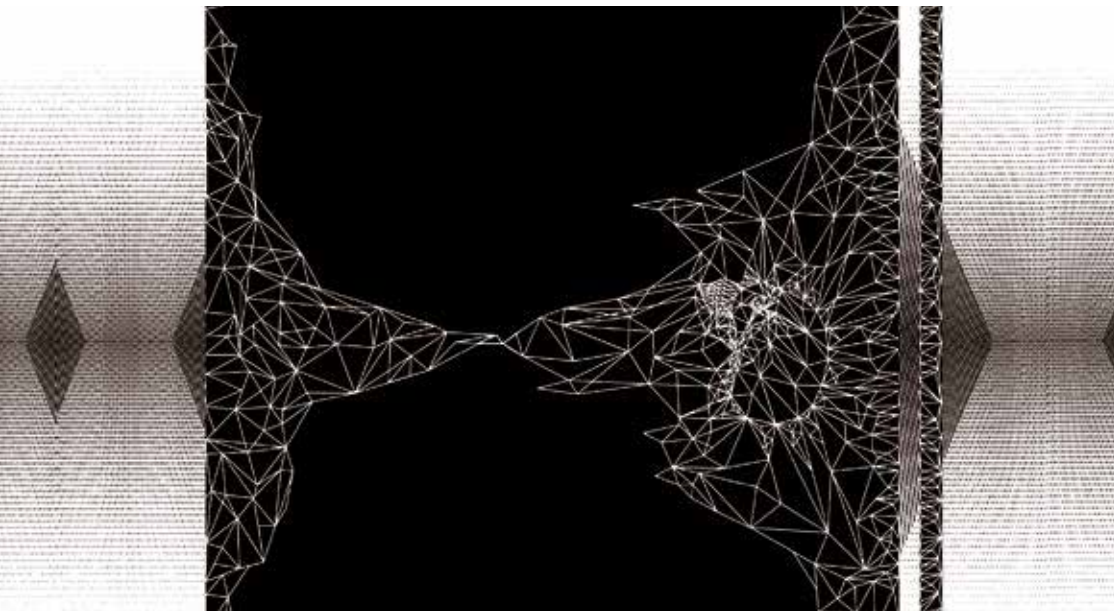
© U-EXIST



**U-UE003
SPIDER**

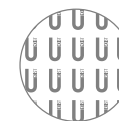
© U-EXIST





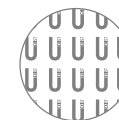
U-UE077
VANITE
NEGATIF

© U-EXIST



U-NY002
FLOWER

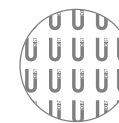
© NUMA





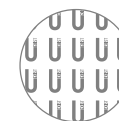
**U-UE004
VEGETA**

© U-EXIST



**U-UE006
TOTEM**

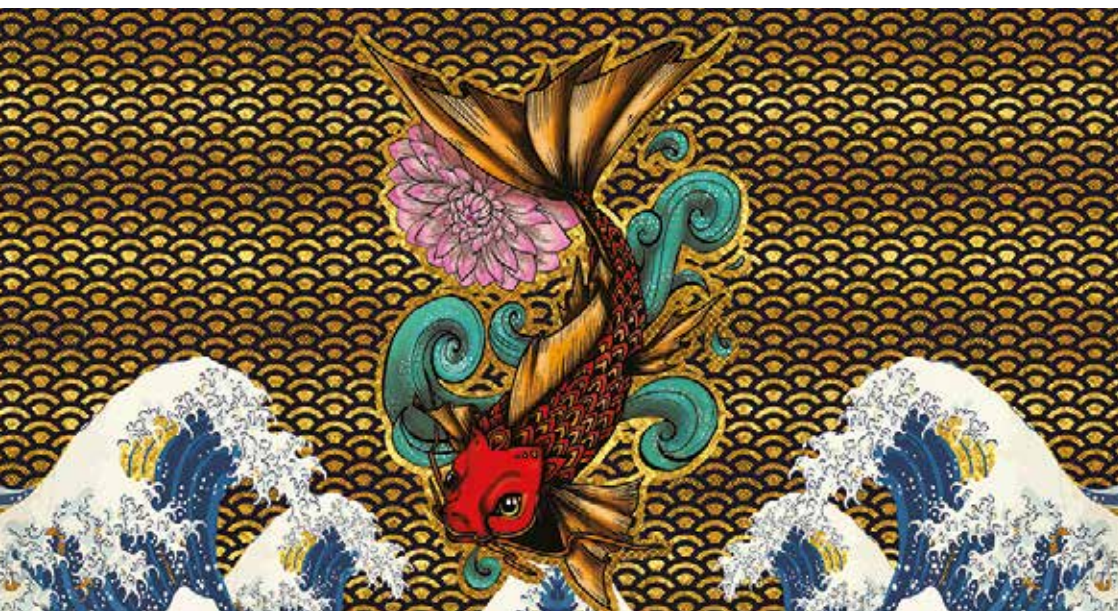
© U-EXIST





**U-JA001
GEYSHA**

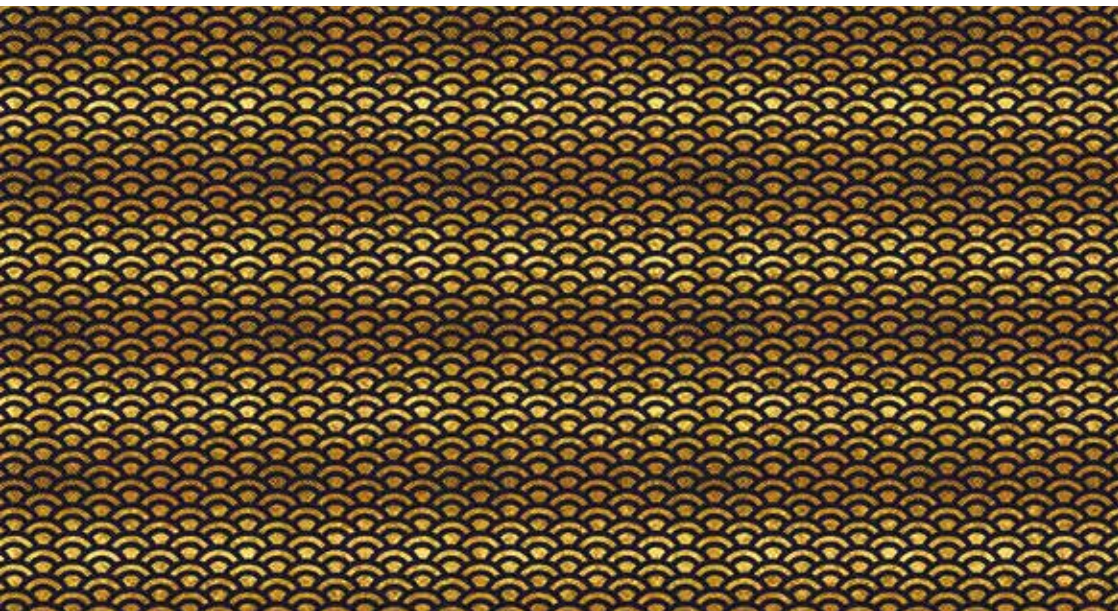
© U-EXIST



**U-JA002
CARPE KOI**

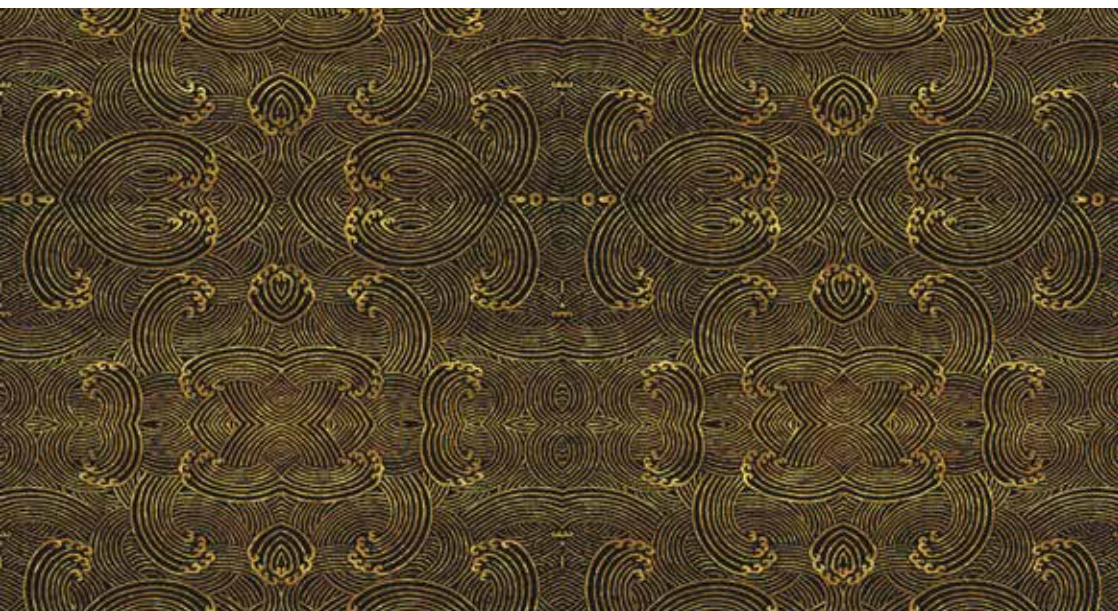
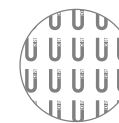
© U-EXIST





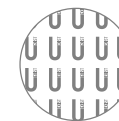
**U-JA003
GOLDEN SEA**

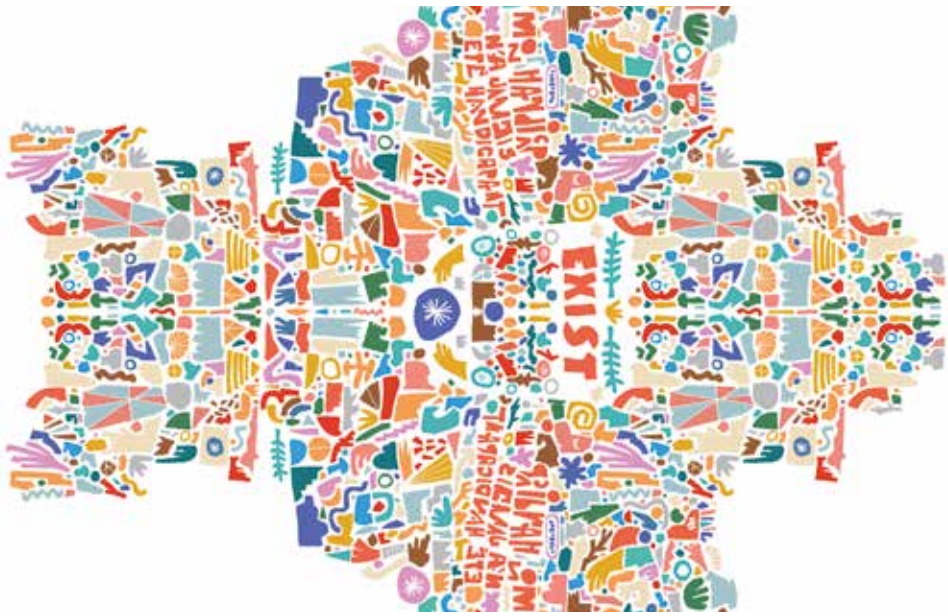
© U-EXIST



**U-JA004
GOLDEN
WAVE**

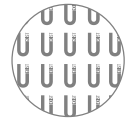
© U-EXIST





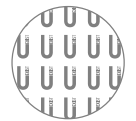
**U-KY001
MATISME**

© KYLAB



**U-KY002
BIRD**

© KYLAB





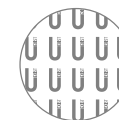
**U-FM040
SKY ANGEL**

© U-EXIST



**U-UE047
STRANGE**

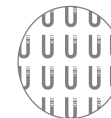
© U-EXIST





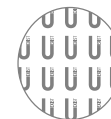
**U-SB001
BURNING
SUN**

© SARAH BUSCAIL



**U-SB002
PEACH**

© SARAH BUSCAIL



**U-SB003
PARROTS**

© SARAH BUSCAIL

