

**DOSATRON®***Because life is powered by water* ■ ■ ■ ■ ■**D14**

14 US GPM

[www.dosatronusa.com](http://www.dosatronusa.com)

## QUICK START UP

**D14 RANGE****14 US GPM**

*Congratulations on your new Dosatron.  
Please read the following important information.*

### IMPORTANT NOTES

For complete information on the features and operations,  
refer to your manual on [www.dosatronusa.com](http://www.dosatronusa.com)  
or download our DOSATRON app



Available on the  
**App Store**



ANDROID APP ON  
**Google play**



**NEED HELP ? CALL 800-523-8499**  
**[www.dosatronusa.com](http://www.dosatronusa.com)**

ET268/Waring-D14-US/11/15

### CUSTOMER SERVICE/DEPARTAMENTO CLIENTELA/ SERVICE CLIENTÈLE :

NORTH & CENTRAL AMERICA :  
DOSATRON INTERNATIONAL INC.

2090 SUNNYDALE BLVD, CLEARWATER - FL 33765 - USA  
Tel. 1-727-443-5404 / 1-800-523-8499 - Fax 1-727-447-0591  
Site web: [www.dosatronusa.com](http://www.dosatronusa.com)

### MANUFACTURED BY/FABRICADO POR/FABRIQUÉ PAR :

DOSATRON INTERNATIONAL S.A.S.

Certified GEH&S System

Rue Pascal - B.P. 6 - 33370 TRESSIES (BORDEAUX) - FRANCE

Tel. 33 (0)5 57 97 11 11

Fax. 33 (0)5 57 97 11 29 / 33 (0)5 57 97 10 85

info@dosatron.com - [www.dosatron.com](http://www.dosatron.com)



This document does not form a contractual engagement on the part of Dosatron International and is for information only. Dosatron International reserves the right to alter product specification or appearance without prior notice.

© DOSATRON INTERNATIONAL S.A.S 2009

### ⚠ CAUTION

- When connecting a DOSATRON either to the public water supply or to its own water source, you must respect the regulations in force concerning protection of the source i.e. backflow prevention, etc.
- Contact local authorities for requirements of backflow prevention.
- When installing, operating, and maintaining the DOSATRON water powered metering pump, keep safety considerations foremost. Use proper tools, protective clothings, and eye protection when working on the equipment and install the equipment with a view toward ensuring safe operation.
- Follow the instructions in the manual and take additional safety measures appropriate to the liquid being pumped and the temperature of the water that powers the DOSATRON. Be extremely careful in the presence of hazardous substances (e.g. corrosives, toxins, solvents, acids, caustic, flammables, etc.).
- Before applying any aggressive chemicals, please consult your distributor to confirm compatibility with the dosing pump.



**Hand tighten. No tools needed.**

### RECOMMENDATIONS

**DO NOT USE THIS UNIT WITHOUT A 300 MESH  
[60 MICRON] WATER FILTER\*  
OR YOUR WARRANTY WILL BE VOID.**

\*The 300 mesh [60 micron] water filter (sold separately) protects your unit from debris in the water that causes scoring to the piston and housing.

**KNOW YOUR WATER FLOW!  
GRADUALLY TURN ON THE WATER.**

**COUNT THE NUMBER OF CLICKS IN  
15 SECONDS. DO NOT EXCEED 48\* CLICKS.**

#### CLICK CHART

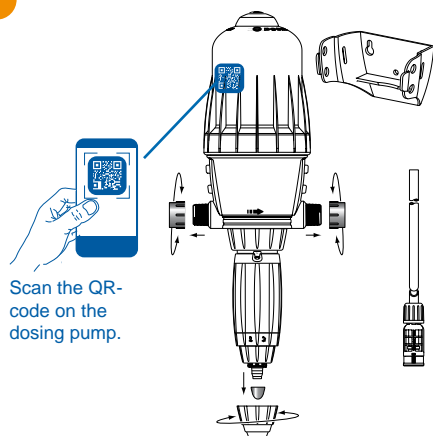
Clicks/15sec	GPM	Clicks	US GPM
2	0.6	16	4,5
4	1,2	32	9
8	2,3	48	14



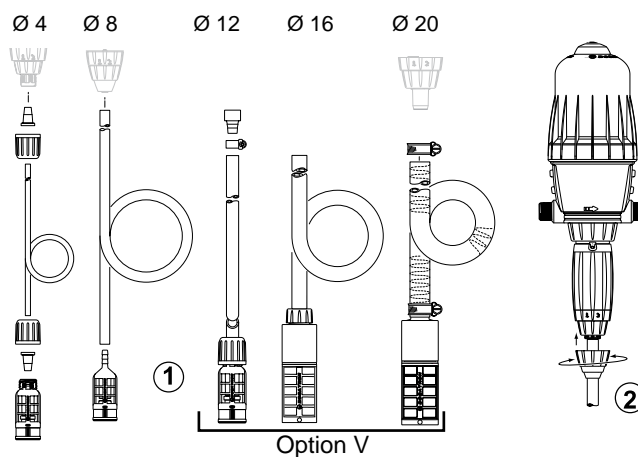
**MAXIMUM PRESSION 85 PSI\* [6 bar]**

\* 57psi [4 bar] D14MZ520

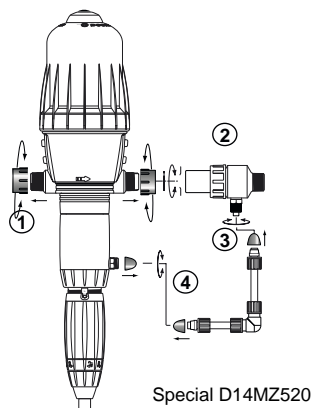
1



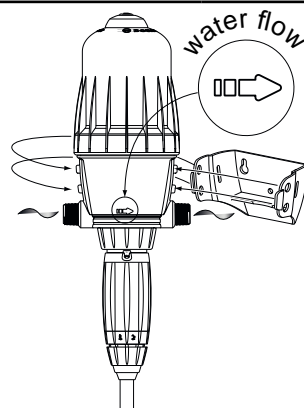
2



3



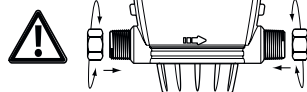
4



Maximum: 48 clicks/15 sec.\*

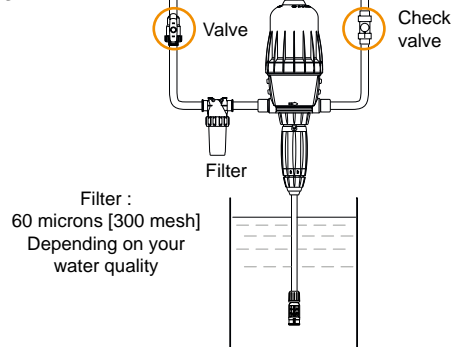
\*D14MZ520 = 30 clicks/15 sec.

5

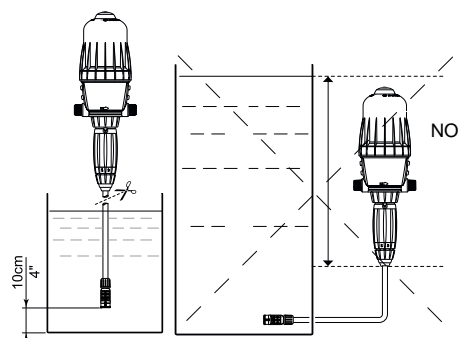


Max.Torque 20 Nm thus 2 kg (1 N.m = 0,1 DaN.m)

#### INSTALLATION HINTS

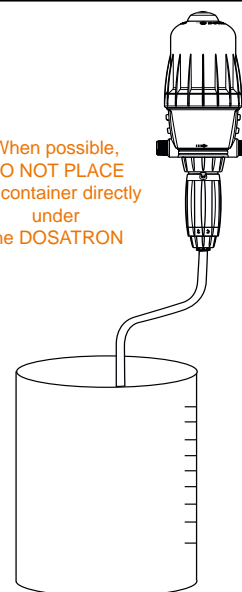


6



7

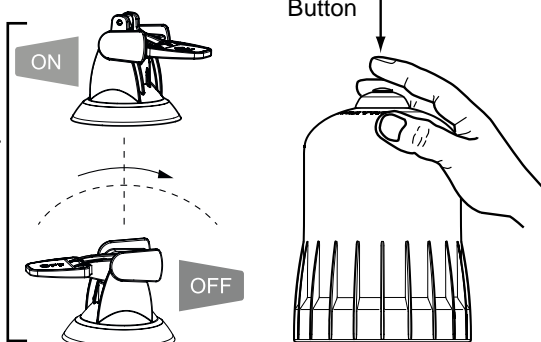
When possible,  
DO NOT PLACE  
the container directly  
under  
the DOSATRON



8

Air-Bleed  
Button

BY PASS Option



9

