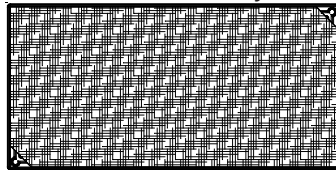




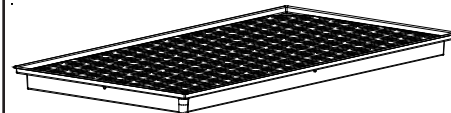
INSTRUCTIONS FOR USE WB4824

Components

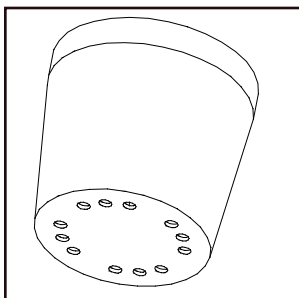
Waterbed™ Tray:



(1) 2x4' Waterbed™



NOTE: Plants must be watered before filling the waterbed.



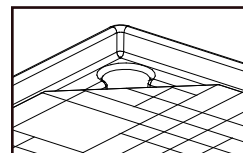
Step 1

Pot Compatibility

Pots to use with Waterbed™ System must have drain holes flush with bottom of the pot.

Soil Compatibility

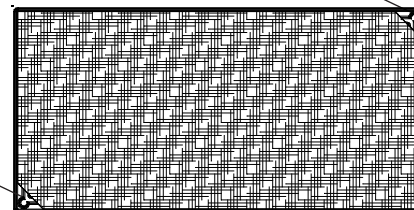
Soil should contain a minimum of 30% (ideally 50%) sphagnum peat or coconut fibers.



Fill Spout

Fill Spout

Fill Spout



Step 2

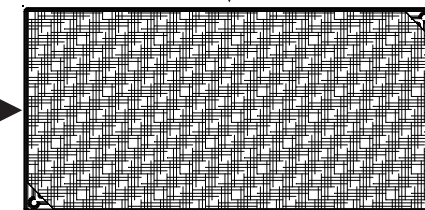
Filling Procedure

Pour water into either fill spout until water flows out of drain holes shown in step 3.

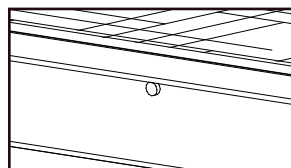
Drain Hole



Drain Hole



Drain Hole



Drain Hole

Step 3

When water begins to drain from the drain holes your Waterbed™ is full. **Refill when necessary!**

Drain Hole

NOTE: If Waterbed™ becomes completely dry, water plants before refilling Waterbed™.