

CONTENTS

	(1) 3/4" Backflow Preventer with FHT x MHT part# D45		(1) 50' of 1/2" Polyethylene Drip Tubing .600" ID x .700" OD part# B35
	(1) 3/4" FHT Preset Pressure Regulator at 25 PSI part# D46		(1) 50' of 1/4" Black Micro Tubing with .170" ID x 250" OD part# B38P
	(1) 3/4" FHT Swivel Adapter with Screen part# C34		(2) Hose End Figure "8" part# F68B
	(1) 1/4" Ball Valve part#D33A		(20) 1-GPH PC Drippers, Black, part# B221B
	(1) 1/2" Compression Coupling part# C35		(2) 2-GPH PC Drippers, Green, part# B224B
	(1) 1/2" Compression Tees part# C35		(2) 4-GPH PC Drippers, Red, part# B222B
	(1) 1/2" Compression Elbows* part# C36		(5) 1/4" Tubing Holder Stakes part# P33B
	(5) 1/4" Tees** part# H82A		(1) Hole Punch part# D44
	(5) 1/4" Barbs** part# H80A		(3) 1/2" Tubing Holder Stakes part# R60
			(2) Goof Plugs part# G79B

*newly added
**3 additional tees and barbs added

DIG CORPORATION THREE-YEAR WARRANTY

DIG CORPORATION warrants these products to be free from defects in material and workmanship for a period of three years from date of purchase. This warranty does not cover damage resulting from accident, misuse, neglect, modification, improper installation or objection to line pressure in excess of 50 lbs. per square inch. This warranty shall extend only to the original purchaser of the product for use by the purchaser. This warranty shall not cover batteries or any malfunction of the product due to battery failure. The obligation of DIG CORPORATION under this warranty is limited to repairing or replacing at its factory this product which shall be returned to the factory within three years after the original purchase and which on examination is found to contain defects in material and workmanship.

DIG CORPORATION SHALL IN NO EVENT BE LIABLE FOR ANY INCIDENTAL OR CONSEQUENTIAL DAMAGES OF ANY KIND; THE SOLE OBLIGATION OF DIG IS LIMITED TO REPAIR OR REPLACEMENT OF DEFECTIVE PRODUCTS. SOME STATES DO NOT ALLOW THE EXCLUSION OR LIMITATION OF INCIDENTAL OR CONSEQUENTIAL DAMAGES, SO THE ABOVE LIMITATION OR EXCLUSION MAY NOT APPLY TO YOU.

Unattended use for prolonged periods without inspection to verify proper operation is beyond the intended use of this product, and any damage resulting from such use shall not be the responsibility of DIG CORPORATION. There are no warranties which extend beyond the description on the face hereof. In the case of purchase of the product for use other than, for irrigation purposes, DIG CORPORATION hereby disclaims any implied warranties including any warranties of merchantability and fitness for a particular purpose. In the case of the purchase of the product for personal, family or household purposes, DIG CORPORATION disclaims any such warranties to the extent permitted by law. To the extent that any such disclaimer or implied warranties shall be ineffectual, then any implied warranties shall be limited in duration to a period of one year from the date of the original purchase for use by the purchaser. Some states do not allow limitation on how long an implied warranty lasts, so the above limitation may not apply to you. In order to obtain performance under this warranty, the unit must be returned to the factory, along with proof of purchase indicating original date of purchase, shipping prepaid, addressed as follows:

DIG CORPORATION, 1210 Activity Drive, Vista, CA 92081. Repaired or replaced units will be shipped prepaid to the name and address supplied with the unit returned under warranty. Allow four weeks for repairs and shipping time. Repair of damaged units not otherwise within warranty may be refused or done at a reasonable cost or charge at the option of DIG CORPORATION. This warranty gives you specific legal rights, and you may also have other rights which vary from state to state.

1.800.322.9146 FAX: 760.727.0282



1210 Activity Drive
Vista, CA 92081-8510

www.digcorp.com
dig@digcorp.com



Printed in the USA. We at DIG strongly believe in conservation.
Please recycle whenever possible. 083018 REV D 26-008



INSTALLATION INSTRUCTIONS

Landscape Drip Watering System

Model G77AS

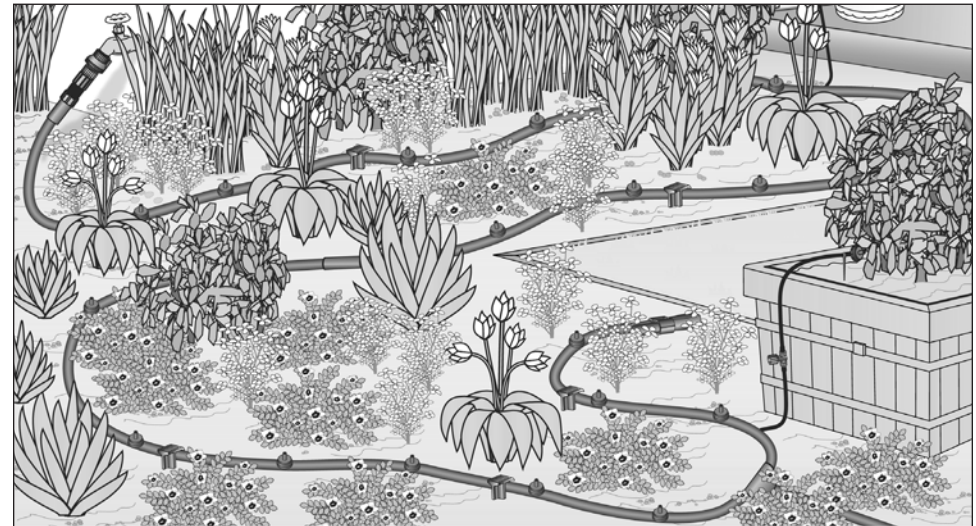
INTRODUCTION

Thank you for purchasing the DIG Model G77AS Landscape Drip Watering System. Please take the time to read through the enclosed instructions and follow them step by step. If you have any questions, please call our customer service line at 1.800.344.2281.

ABOUT YOUR G77AS KIT

Let your landscape thrive with this complete drip watering kit that connects to any outdoor faucet. The G77AS starter kit includes DIG's pressure compensating drippers and contains all the parts needed to irrigate up to 150 square feet. Use these guidelines to design and install an efficient low-volume irrigation system that conserves water and promotes a healthy environment.

INSTALLATION



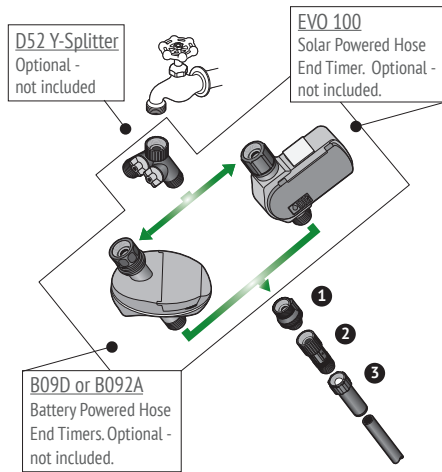
This kit can be connected into a 3/4" faucet/spigot or at the end of a garden hose. If a faucet is not adjacent to the garden or to the location of the installation, you may extend from the faucet using a garden hose or an additional length of 1/2" drip tubing (model B35 for 50' or B36 for 100').

To start the installation, the backflow device should be mounted directly to the faucet. Please make sure to add the 25-PSI pressure regulator (included) after the backflow preventer. The pressure regulator is used to lower the incoming pressure from the faucet to the recommended operating pressure of 25 PSI, which is within the range of operating pressures for drip irrigation or micro-sprinkler systems.

Faucet connection:

Begin the installation at the water source by attaching the backflow preventer to your faucet ①, and then attach the 25-PSI preset pressure regulator ② to the backflow preventer. Connect the poly tubing to the 3/4" swivel adapter ⑤ and attach it to the pressure regulator by turning "clockwise" until hand tight.

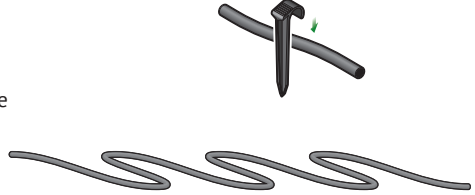
If you wish to automate the system, please select a DIG battery or solar powered timer (model B09D, B092A or EVO100), available online or in a store near you.



Drip tubing layout:

Before installing the 1/2" poly tubing, uncoil the roll and lay it out in direct sunlight (if possible) for 30 to 40 minutes. This will make it more pliable and easier to work into the compression fittings during installation.

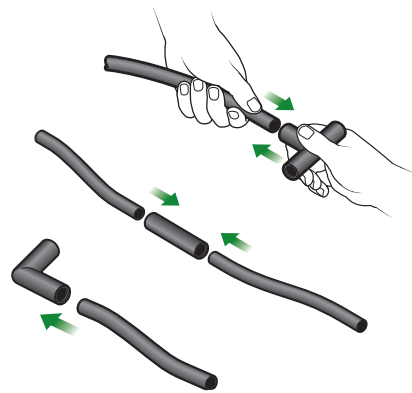
Lay out the 1/2" poly tubing and run it next to as many plants as possible. Secure the drip tubing to the soil with the 1/2" drip tubing stakes. Install the poly tubing in a gentle S curve to allow for contraction at low to high temperatures.



Connect the 1/2" drip fittings

Use 1/2" tees (part #C35) and elbows (part #C36) throughout the layout as needed. To install the 1/2" compression fittings, cut the poly tubing with a hand pruner, being careful to keep dirt from entering the line. Hold the fitting in one hand and the poly tubing in the other and force the poly tubing into the compression fitting by moving it from side to side.

Note: Open the faucet and flush out the poly drip tubing through the ends before installing the drip emitters.



Drip emitter installation:

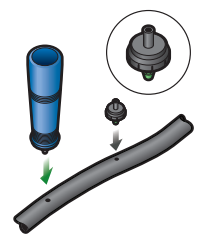
The drip emitters can be installed along the poly tubing at varying or specific spacings, depending on the layout of the plants. To ensure high uniformity, take care not to exceed the recommendations provided in the kit specifications.

To install the drip emitters, use one or both of the two options:

Option 1:

Installing the drip emitters into the 1/2" poly tubing

Insert the drip emitters directly into the 1/2" tubing: Punch a hole into the side of the poly tubing using the small punch (part #D44). Snap the barbed side of the drip emitter into the hole after the lines have been flushed.



Option 2:

Installing the drip emitters into the 1/4" micro tubing

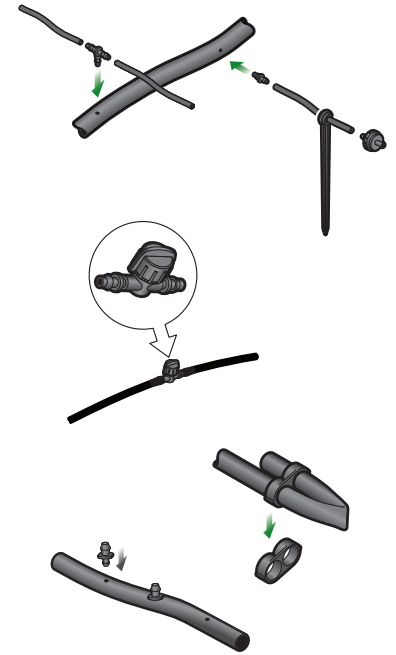
Extend the drip emitters using 1/4" micro tubing to reach plants that are not near the 1/2" poly tubing: First, run a length of micro tubing from the 1/2" poly tubing to the plant and cut it. Then, insert a 1/4" barbed connector (part #H80A) into the micro tubing. Punch a hole into the 1/2" poly tubing and insert the 1/4" barb into the poly tubing. At the other end of the micro tubing, insert the barbed side of the drip emitter after the lines have been flushed. Add a stabilizer stake and secure to the ground.

Use the 1/4" barbed valve for manual control of individual line of micro tubing.

Initial system start-up

Turn the water on again and flush the line[s]; this will flush out any dirt or debris that may be in the line[s]. Close the end of the poly tubing with the figure "8" hose end (part #F68B).

Test and inspect the system to identify if there are any leaks in the drip tubing laterals. If there are any leaks from the barbed fittings or drip emitters, remove the fittings or drip emitters and insert a goof plug to close the hole. Reinsert the barb fittings or drip emitters nearby.



WATERING SCHEDULE

Open the faucet for 45 minutes to 1 hour every 2 to 3 days, depending on your location, weather and soil type. Faster draining, lighter soils will need to be irrigated more frequently than heavy, soild soils with high clay content. After a few days, check the soil and the health of the plants, and adjust the watering schedule as needed. If you have an irrigation controller and additional time is required, adjust the irrigation controller program with a longer watering duration and/or additional start times.

SPECIFICATION

- Operating pressure: 10 to 45 PSI
- Recommended operating pressure: 25 PSI (use with model D46 25-PSI pressure regulator)
- Flow rates and color codes:
 - 1 GPH (4 L/H) color code - black
 - 2 GPH (8 L/H) color code - green
 - 4 GPH (12 L/H) color code - red
- Maximum recommended flow rate: 220 GPH (3.7 GPM)
- Poly tubing length and size: 50' x 1/2" with .600" ID x .700" OD
- Micro tubing length and size: 50' x 1/4"
- Total flow rate for this kit: 32 GPH (.53 GPM)

TYPE OF PLANTS

RECOMMENDED NUMBER OF DRIPPERS AND SPACING

Flowers	In sandy or loamy soil, place one, 1-GPH dripper every 10" to 12". In clay soil, place one, 1-GPH dripper every 16" to 20".
Vegetables	In sandy or loamy soil, place one, 1-GPH dripper every 10" to 12". In clay soil, place one, 1-GPH dripper every 16" to 20"
Small shrubs and roses (up to two feet high)	In sandy or loamy soil, place one, 2-GPH dripper per plant. In clay soil, place two, 1-GPH drippers per plant 16" to 20" apart.
Medium shrubs and trees (two to four feet high)	In sandy or loamy soil, place two, 1-GPH drippers per plant 10" to 12" apart. In clay soil, place two, 1-GPH drippers per plant 16" to 20" apart.
Large shrubs and trees (four to six feet high)	In sandy or loamy soil, place three to four, 1-GPH drippers per plant 10" to 12" apart. In clay soil, place three to four, 1-GPH drippers 16" to 20" apart.