



TRUSTED SINCE 1926
BONIDE

Neem Oil

3 garden products in one

Concentrate



Controls blackspot, powdery mildew, rust, spider mites, aphids, whiteflies & other insect pests

For use on roses, flowers, houseplants, ornamental trees and shrubs, fruits, nuts and vegetables

ACTIVE INGREDIENT:

Clarified Hydrophobic Extract of Neem Oil..... 70.00%

OTHER INGREDIENTS:..... 30.00%

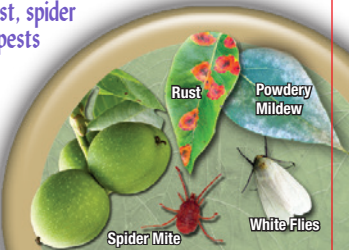
TOTAL:..... 100.00%

EPA Est No. 4-NY-1

EPA Reg. No. 70051-2-4

Keep Out Of Reach Of Children

CAUTION (See back booklet for additional
Precautionary Statements and First Aid)



**FOR ORGANIC
GARDENING**



Neem Oil Concentrate

- ✓ Stops powdery mildew in 24 hours
- ✓ For use in and around the home and home garden
- ✓ Can be used up to day of harvest
- ✓ For Organic Gardening

EPA Reg. No. 70051-2-4 EPA Est. No. 4-NY-1
©Bonide Products, LLC All Rights Reserved
Distributed by:
Bonide Products, LLC
6301 Sutliff Road
Oriskany, NY 13424

BN

DIRECTIONS FOR USE

IT IS A VIOLATION OF FEDERAL LAW TO USE THIS PRODUCT IN A MANNER INCONSISTENT WITH ITS LABELING.

GENERAL INFORMATION

- Defends your roses against insects, diseases, and mites.
- Do not add adjuvants (spreaders, stickers, extenders, etc.) to Captain Jack's™ Neem Oil Concentrate.
- Stops powdery mildew in 24 hours.
- Kills eggs, larvae and adult insects.
- Shake well before using.
- Prevents and controls black spot on roses, anthracnose, rust and powdery mildew.
- Do not apply to wilted or otherwise stressed plants, or to newly transplanted materials prior to root establishment.
- May also be used as a dormant or delayed dormant spray to control overwintering eggs of various insects on fruit and shade trees, shrubs, roses, and other ornamentals and vegetables. Spray to visibly wet or until all plant surfaces are completely wet.
- Do not apply to known sensitive plant species, such as impatiens flowers, fuchsia flowers, hibiscus flowers, some

rose flowers, ornamental olive trees, or some carnation varieties without prior testing.

- As with other oil-based products, exercise care in timing applications to early morning/late evening to minimize the potential for leaf burn.
- Use with care on plants with tender tissue. Check for leaf burn in small scale trials prior to use.
- Can be used as a leaf polish on hardy plants.

FUNGICIDE USE

For use on Fruits, Vegetables, Herbs, Spices, Roses, Houseplants, Flowers, Trees and Shrubs, Home Lawns.

Management of Turf Diseases

Captain Jack's™ Neem Oil Concentrate may be used on all turf such as Kentucky bluegrass, perennial ryegrass, turf type tall fescue, Bermudagrass, Zoysia grass, and St. Augustine grass around the home. Refer to table for detailed application rates.

Spray Target	Concentration	Spray Interval	Precautions
Snow Mold	1:100-1:500 (1.0%-0.2%)	14 days	In Fall before first snow
Dollar Spot	1:100-1:200 (1.0%-0.5%)	7-14 days	At first sign of disease
Brown Patch	1:100-1:200 (1.0%-0.5%)	7-14 days	At first sign of disease

Application Instructions

Captain Jack's™ Neem Oil Concentrate is an effective fungicide for the prevention and control of various fungal diseases including powdery mildew, black spot, downy mildew, anthracnose, rust, leaf spot, *botrytis*, needle rust, scab and flower, twig and tip blight, and *alternaria*. As a preventative, apply Captain Jack's™ Neem Oil Concentrate on a 7 to 14 day schedule until disease development is no longer present. To control disease already present, apply Captain Jack's™ Neem Oil Concentrate on a 7 day schedule until disease pressure is eliminated. Then continue spraying on a 14 day schedule to prevent the disease from reoccurring. To prevent rust leaf spot diseases, anthracnose and scab, begin applications at the first sign of spring budding. To prevent powdery mildew, apply in mid-summer or when disease is first detected. Continue applications until disease pressure no longer exists.

Mixing Instructions

Mix Captain Jack's™ Neem Oil Concentrate at the rate of 2 tablespoons (1 fluid ounce) per gallon of water. Thoroughly mix solution and spray all plant surfaces (including undersides of leaves) until completely wet. Frequently mix solution as you spray.

INSECTICIDE/MITICIDE USE

For use on Fruits, Vegetables, Herbs, Spices, Roses, Houseplants, Flowers, Trees and Shrubs.

Application Instructions

Apply Captain Jack's™ Neem Oil Concentrate at first sign of insects/mites. For control of aphids, spider mites, scale, whiteflies, beetles, leafrollers, and other insect pests. Captain Jack's™ Neem Oil Concentrate is most effective when applied every 7 to 14 days. For heavy insect populations, spray on a 7 day schedule.

Mixing Instructions

Mix Captain Jack's™ Neem Oil Concentrate at the rate of 2 - 4 tablespoons (1 - 2 fluid ounces) per gallon of water. Thoroughly mix solution and spray all plant surfaces (including underside of leaves) until completely wet. Frequently mix solution as you spray.

STORAGE AND DISPOSAL

Pesticide Storage: Keep in original container. Store away from direct sunlight, feed, or foodstuffs. Keep container tightly sealed when not in use. Keep from freezing.

Pesticide Disposal and Container Handling: *If empty* - Non-refillable container. Do not reuse or refill this container. Place in trash or offer for recycling if available. *If partly filled* - Call your local solid waste agency or 1-800-CLEANUP for disposal instructions. Never place unused product down any indoor or outdoor drain.

FIRST AID

If on skin or clothing:	Take off contaminated clothing. Rinse skin immediately with plenty of water for 15-20 minutes.
If in eyes:	Hold eye open and rinse slowly and gently with water for 15-20 minutes. Remove contact lenses, if present, after the first 5 minutes, then continue rinsing eye.
Call a poison control center or doctor for treatment advice.	

FIRST AID Cont.

Have the product container or label with you when calling a poison control center or doctor, or going for treatment.
Hotline Number: 1-800-858-7378.

PRECAUTIONARY STATEMENTS

HAZARDS TO HUMANS AND DOMESTIC ANIMALS

CAUTION: Harmful if absorbed through the skin. Causes moderate eye irritation. Avoid contact with skin, eyes or clothing. Wash thoroughly with soap and water after handling and before eating, drinking, chewing gum or using tobacco. Remove and wash contaminated clothing before reuse.

ENVIRONMENTAL HAZARDS

Do not apply directly to water. Do not contaminate water when disposing of equipment washwaters or rinsate. To protect the environment, do not allow pesticide to enter or run off into storm drains, drainage ditches, gutters or surface waters. Applying this product in calm weather when rain is not predicted for the next 24 hours will help to ensure that wind or rain does not blow or wash pesticide off treatment area. Rinsing application equipment over the treated area will help avoid run off to water bodies or drainage systems.

BEE HAZARD

This product is toxic to bees exposed to direct treatment. Do not apply this product while bees are actively visiting the treatment area.

WARRANTY

Bonide Products, LLC warrants that the material contained herein conforms to the description on the label and is reasonably fit for the purposes referred to in the directions for use. Timing and method of application, weather, watering practices, nature of soil, the insect problem, condition of the crop, incompatibility with other chemicals not specifically recommended, and other influencing factors in the use of this product are beyond the control of the seller. To the extent consistent with applicable law, Buyer assumes all risks of use, storage or handling of this material not in strict accordance with directions given herein. **NO OTHER EXPRESS OR IMPLIED WARRANTY OF THE FITNESS OR MERCHANTABILITY IS MADE.**