

# KNOCK

## CONFIGURAZIONE 1 GIRO CON 12 GRADINI



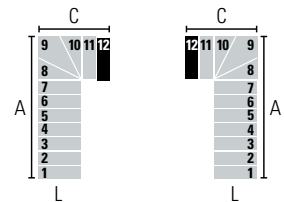
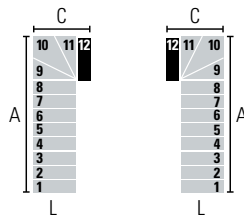
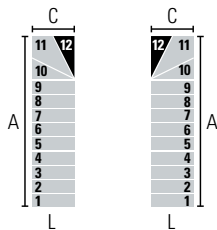
**LEGENDA:**

- Gradino di arrivo al piano superiore
- Altri gradini

Attraverso le seguenti configurazioni è possibile determinare il senso di salita, l'entrata e l'uscita della scala in base al numero di gradini.

Le misure indicano l'ingombro a terra della scala.

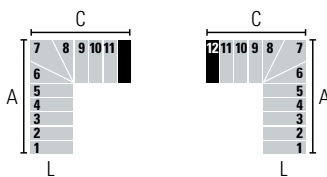
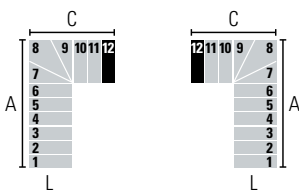
**12 GRADINI (13 ALZATE) • Altezza tra i piani: Min. 241 cm - Max. 289 cm (Max. 313 cm con accessorio "Distanziali Extra")**



L (cm)	A (cm)		C (cm)	
	Min	Max	Min	Max
65	246,5	266,5	69	-
75	256,5	276,5	79	-
85	292	309	89	-
95	301	319	99	-

L (cm)	A (cm)		C (cm)	
	Min	Max	Min	Max
65	226,5	244	90	-
75	236,5	254	100	-
85	269	284	110	-
95	278	294	120	-

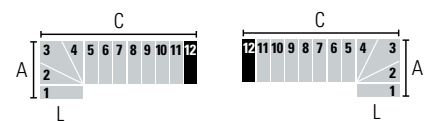
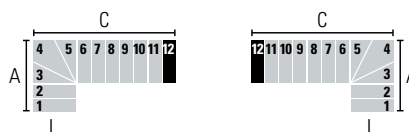
L (cm)	A (cm)		C (cm)	
	Min	Max	Min	Max
65	206,5	221,5	110	112,5
75	216,5	231,5	120	122,5
85	246	259	133	135
95	255	269	143	145



L (cm)	A (cm)		C (cm)	
	Min	Max	Min	Max
65	186,5	199	130	135
75	196,5	209	140	145
85	223	234	156	160
95	232	244	166	170

L (cm)	A (cm)		C (cm)	
	Min	Max	Min	Max
65	166,5	176,5	150	157,5
75	176,5	186,5	160	167,5
85	200	209	179	185
95	209	219	189	195

L (cm)	A (cm)		C (cm)	
	Min	Max	Min	Max
65	146,5	154	170	180
75	156,5	164	180	190
85	177	184	202	210
95	186	194	212	220



L (cm)	A (cm)		C (cm)	
	Min	Max	Min	Max
65	126,5	131,5	190	202,5
75	136,5	141,5	200	212,5
85	154	159	225	235
95	163	169	235	245

L (cm)	A (cm)		C (cm)	
	Min	Max	Min	Max
65	106,5	109	210	225
75	116,5	119	220	235
85	131	134	248	260
95	140	144	258	270

L (cm)	A (cm)		C (cm)	
	Min	Max	Min	Max
65	85,5	-	230	247,5
75	95,5	-	240	257,5
85	108	109	271	285
95	117	119	281	295



L (cm)	A (cm)		C (cm)	
	Min	-	Min	Max
65	64	-	250	270
75	74	-	260	280
85	84	-	294	310
95	94	-	304	320