

COMPOSITO

CONFIGURAZIONE 1 GIRO CON 12 GRADINI



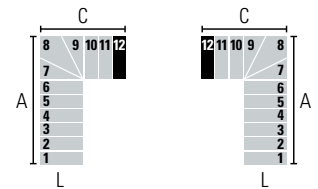
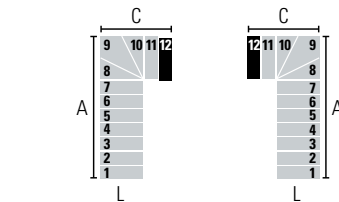
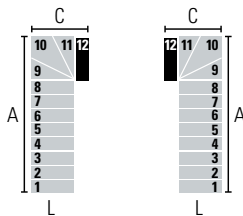
LEGENDA:

- Gradino di arrivo al piano superiore
- Altri gradini

Attraverso le seguenti configurazioni è possibile determinare il senso di salita, l'entrata e l'uscita della scala in base al numero di gradini.

Le misure indicano l'ingombro a terra della scala.

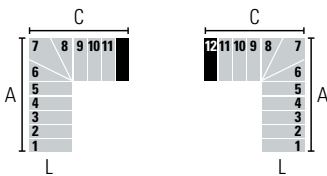
12 GRADINI (13 ALZATE) • Altezza tra i piani: Min. 228 cm - Max. 286 cm (Max. 318 cm con accessorio "Distanziali Extra")



L (cm)	A (cm)		C (cm)	
	Min	Max	Min	Max
74	262	280	99	103
84	272	290	109	113
94	282	300	119	123

L (cm)	A (cm)		C (cm)	
	Min	Max	Min	Max
74	239	255	122	128
84	249	265	132	138
94	259	275	142	148

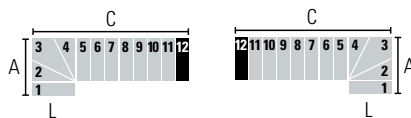
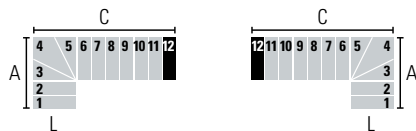
L (cm)	A (cm)		C (cm)	
	Min	Max	Min	Max
74	216	230	145	153
84	226	240	155	163
94	236	250	165	173



L (cm)	A (cm)		C (cm)	
	Min	Max	Min	Max
74	193	205	168	178
84	203	215	178	188
94	213	225	188	198

L (cm)	A (cm)		C (cm)	
	Min	Max	Min	Max
74	170	180	191	203
84	180	190	201	213
94	190	200	211	223

L (cm)	A (cm)		C (cm)	
	Min	Max	Min	Max
74	147	155	214	228
84	157	165	224	238
94	167	175	234	248



L (cm)	A (cm)		C (cm)	
	Min	Max	Min	Max
74	124	130	237	253
84	134	140	247	263
94	144	150	257	273

L (cm)	A (cm)		C (cm)	
	Min	Max	Min	Max
74	101	105	260	278
84	111	115	270	288
94	121	125	280	298