

stealthRO™₁₀₀ / stealthRO™₂₀₀

Drinking Water Upgrade Kit Instructions



*kit does not include a faucet

stealthROTM₁₀₀ / stealthROTM₂₀₀

Drinking Water Upgrade Kit Instructions

This kit allows you to add a pressurized holding tank as well as a post remineralization filter to your stealth RO100 or stealth RO200 for the purpose of drinking water. This can be connected to an above the sink faucet. This kit comes with one length of tubing, be sure to cut tubing with a sharp knife or optional tubing snips (HL#24005).

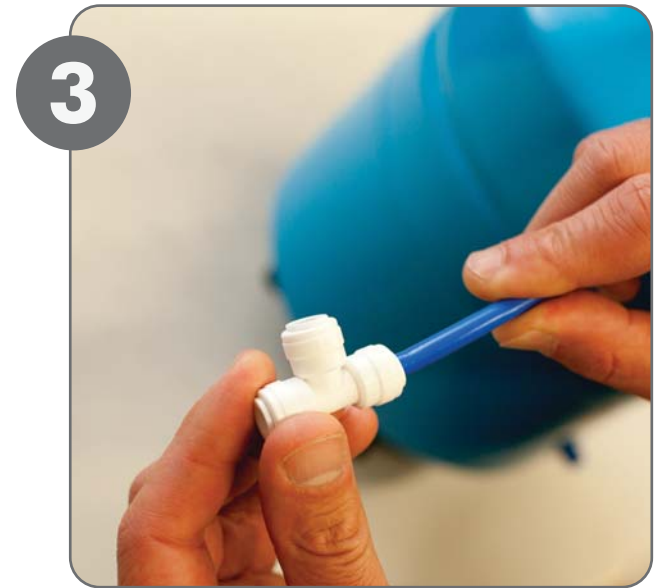
1) Screw on tank valve. The threads on take have teflon tape on them to prevent leaks.



2) Insert 1/4" blue tubing.



3) Insert 1/4" tee to opposite end of tubing.

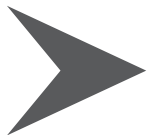


4

4) Insert tubing to 1/4" tee, then insert tubing into remineralizing post filter.



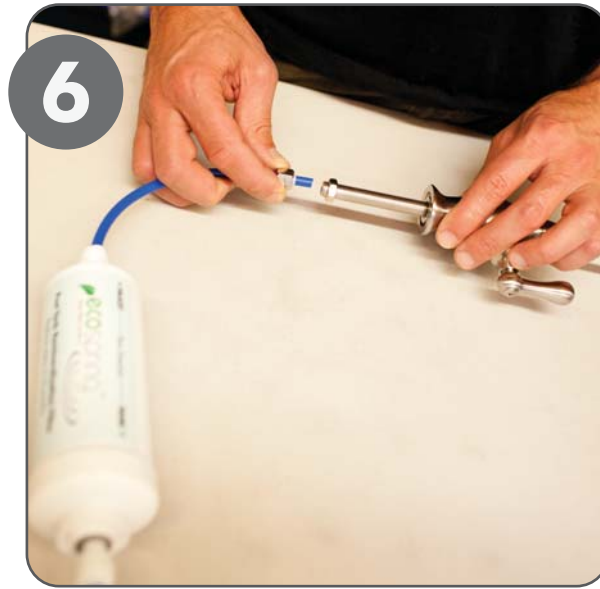
**Instructions
Continued on Back**



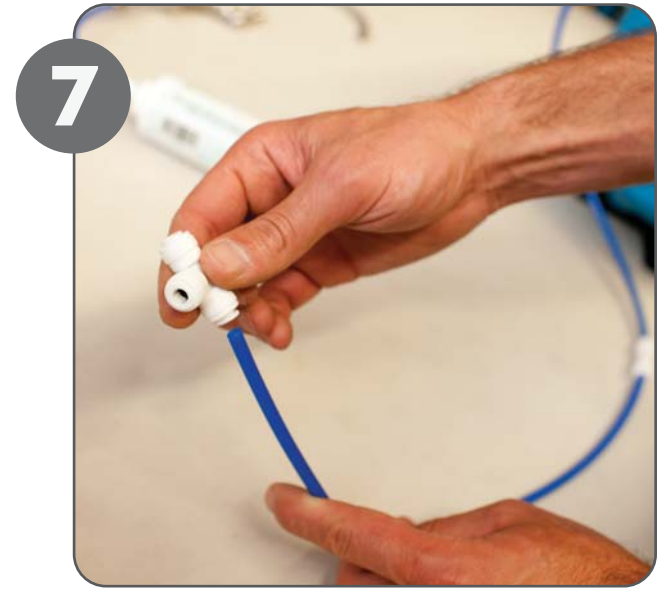
5) Insert check valve (be sure arrow points towards tank).



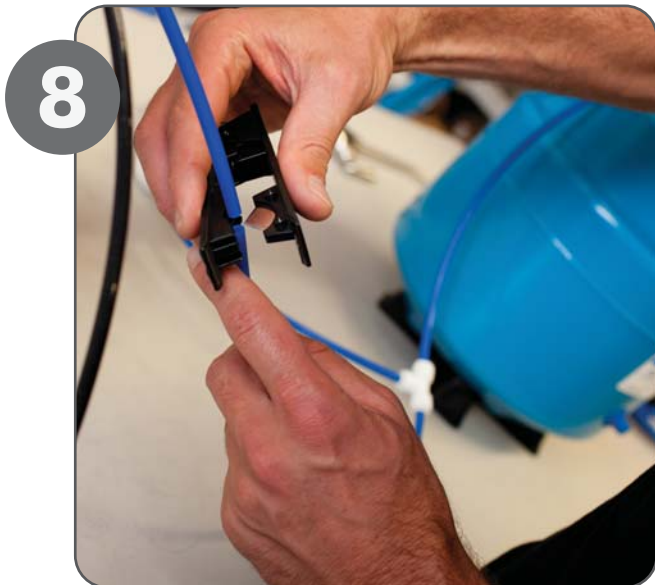
6) Attach tubing to faucet (optional).



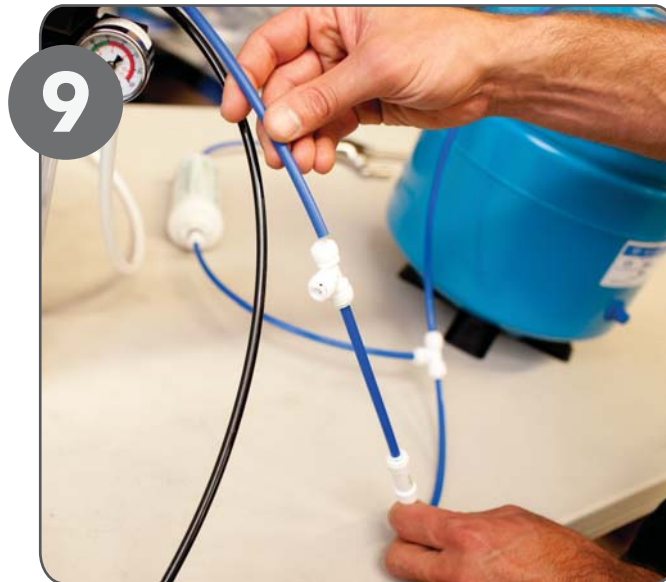
7) Attach tubing to second 1/4 inch tee for filling reservoir or storage tank (optional).



8) Cut blue 1/4 inch product water line coming from stealth (tubing snips optional)



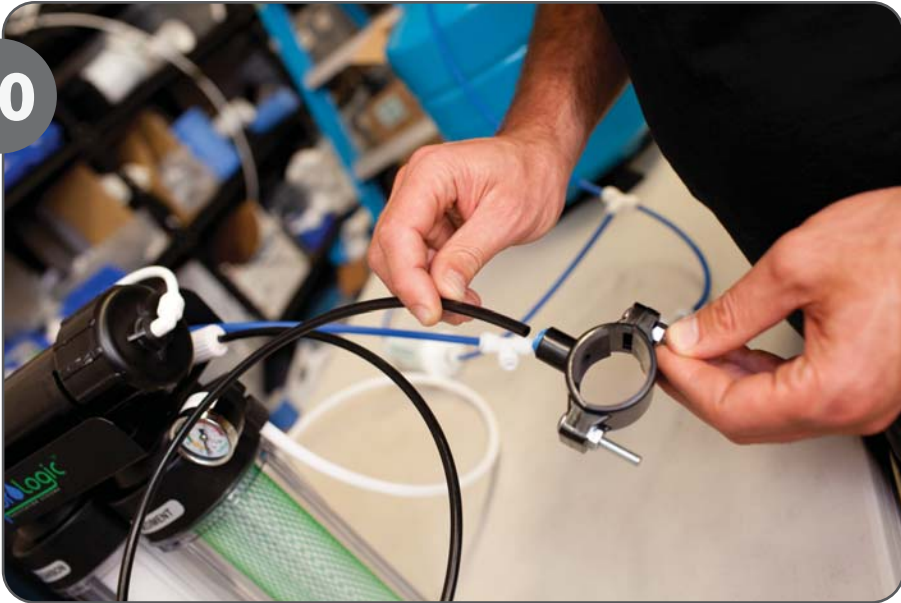
9) Insert tubing into other side of 1/4 inch tee.



**Instructions
Continued on
Next Page**

10) Insert black 1/4" drain line into drain saddle.

10



11) Drill 1/4" hole into under sink drain pipe & attach drain saddle. Be sure to fill & flush tank 2 times before drinking the product water.

11



888-426-5644

www.hydrologicsystems.com

info@hydrologicsystems.com



Useful Video Links

Basic Setup for a stealth RO Drinking Water Upgrade Kit: <http://youtu.be/LmX-4XTxODY>

