

How to use Shape S + Examples

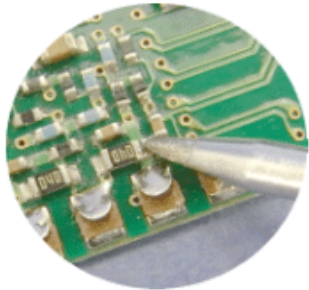


Shape S is derived from other shapes (B, C, D, I) and adapted to be suitable for narrow-pitch soldering while still maintaining the shape. Shape S has a narrower neck to avoid touching nearby components on a packed circuit board.

Other shapes suited for narrow-pitch soldering: Shape I, Shape K.

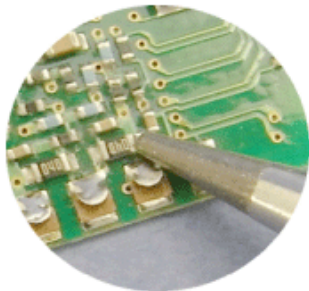
However, please note that 900M-T-S10 and 900M-T-S11 are not suitable for narrow-pitch soldering.

Micro-soldering



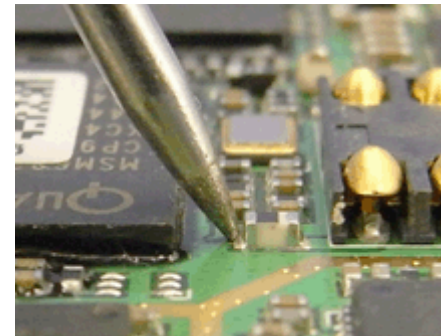
Shape SB: Tip end size R0.2

The special shape of the fine tip end makes it easy to solder a tiny chip.



Shape S: Tip end size R0.5

Soldering at Narrow Pitches



The special shape of the Shape SB fine tip end prevents it from touching nearby chips.



Shape B



Shape SB