



How to use Shape J + Examples

Shape J differs from Shape B and I by bending the tip end and is capable of soldering by applying the tip in 2 ways: face and point.

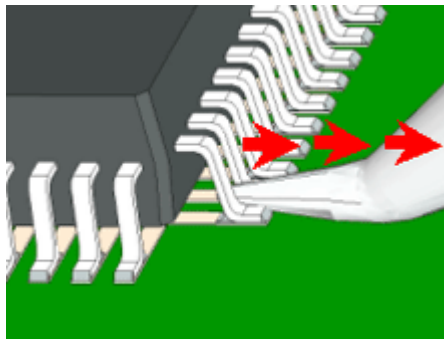
It still has a conical/rounded tip and is used for drag soldering and correction of bridging.

Other Applications:

Drag Soldering

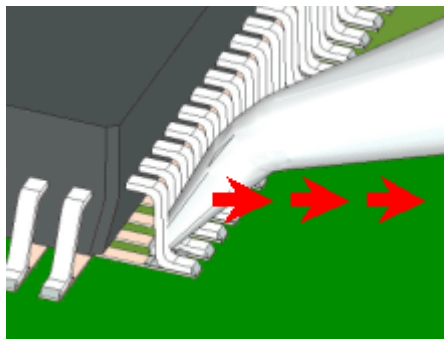
Micro-Soldering

Correcting Bridging



If bridge amount is large:

Lay the long end of the tip perpendicular or parallel on the bridge and drag the tip outwards slowly.

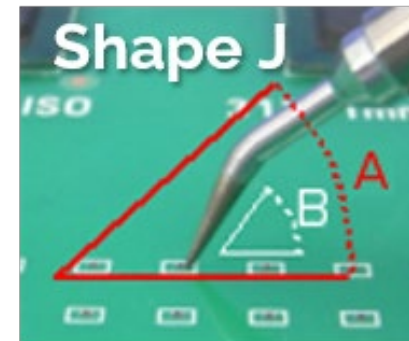


If bridge amount is small:

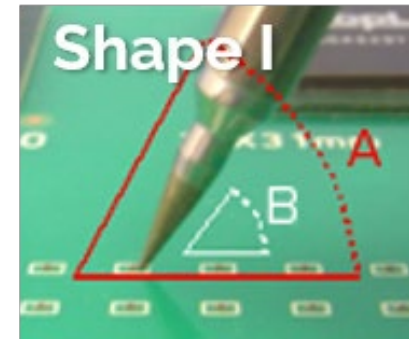
Stand the tip on the pointed end and drag the tip slowly through the solder bridge.

NOTE: Operate with a clean tip

Soldering at Narrow Pitches



The fine pointed end of shape J enables easier soldering on narrow workpieces.



In addition, the bent tip allows you to solder at the same angle as shape I (angle B) while maintaining a more natural grip angle (angle A), reducing hand fatigue.