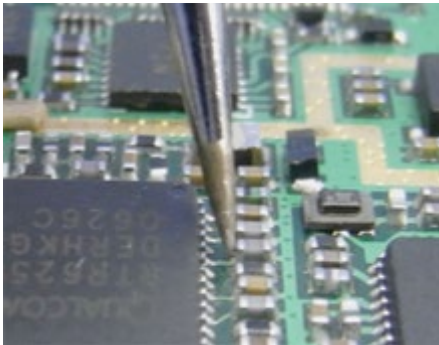


# How to use Shape I + Examples



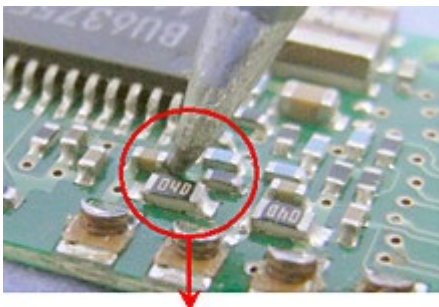
Shape I has a thin conical end and an ultrafine tip which is best suited for soldering micro components such as 0603, and for repairing narrow/high-density-mounting P.W.Bs. such as in cellular phones, etc.

However, given the narrow and pointed tip, the heat capacity of shape I is low and may result in insufficient heat being transferred to the workpiece.



## Micro-Soldering

The very fine tip end makes it easy to solder tiny chips and micro components



## Soldering at Narrow Pitches

For workpieces with narrow pitches, the Shape I is the best tip to prevent touching nearby ICs.

\*Photo shows [T12-ILS](#). Other Tip 12 Shape I includes [T12-I](#) and [T12-IL](#).

