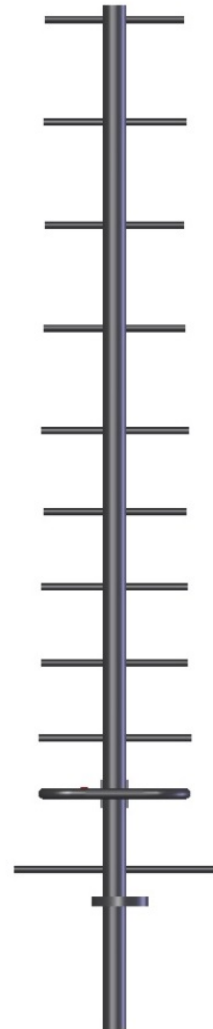


SY415-SFXSNM(ABK) Yagi directional, 12 dBd, black anodized, 902-956 MHz

- 12 dBd gain, covering the entire 902-956 MHz frequency range
- This 11-element Yagi can be used in a variety of applications
- Can be stacked for additional gain
- Black anodized

The SY415 series of Yagi antennas has been developed to meet the need for a high gain, relatively wide-band antenna in the 902-956 MHz range. Designed for superior performance and versatility, this 11-element Yagi fills a variety of application needs.



www.sinctech.com

Region	United States	Europe, Middle East and Africa	Caribbean and Latin America	Canada and rest of the world
Telephone	USA: 1 800 263 3275	International: +44 (0) 1487 84 28 19	International: +1 905 726 7676	Canada: 1 800 263 3275 International: +1 905 727 0165
E-mail	salesusa@sinctech.com	salesuk@sinctech.com	salesla@sinctech.com	salescan@sinctech.com
Product Specification Sheet EPR 015705 Customer Tech Manual 005752		SY415-SFXSNM(ABK)	Issue: 1	Dated: 14-12-16 Dated: 18-07-11
Sinclair's commitment to product leadership may result in improvement or change to this product Copyright © Sinclair Technologies				

Electrical Specifications

Frequency Range	MHz	902 to 956	
Bandwidth	MHz	54	
Connector		N-Male	
Gain (nominal)	dBd (dBi)	12 (14.1)	
Input VSWR (max)		1.5:1	
Polarization		vertical or horizontal	
Pattern		Directional	
Horizontal beamwidth (typ)	degrees	42	*1
Vertical beamwidth (typ)	degrees	37	*2
Average Power Input (max)	W	125	
Lightning protection		DC ground	
Front-to-back ratio (typ)	dB	20	*3

Mechanical Specifications

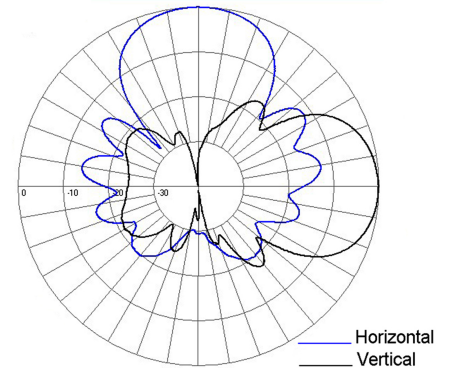
Width	in (mm)	6.4 (163)	
Length/ Height	in (mm)	37.5 (953)	
Finish		anodize (black)	
Weight	lbs (kg)	2.7 (1.23)	
Weight iced (1/2" ice)	lbs (kg)	8 (3.63)	
Mounting Hardware (Included)		Clamp115	*4
Actual shipping weight	lbs (kg)	5 (2.27)	
Shipping dimensions	in (mm)	47x6x18 (1194x152x457)	

Environmental Specifications

Temperature range	°F (°C)	-40 to +140 (-40 to +60)
Wind Loading Area (Flat Plate Equivalent)	ft² (m²)	0.2 (0.02)
Rated wind velocity (no ice)	mph (km/h)	200 (322)
Rated wind velocity (1/2" radial ice)	mph (km/h)	110 (177)
Lateral thrust (100 mph No Ice)	lbs (N)	32 (142.3)
Torsional moment (100 mph No Ice)	ft-lbs (Nm)	49 (66.2)

Notes

- *1 : values based on Vertical polarization
- *2 : values based on Vertical polarization
- *3 : For dual-polarization antenna both the total and co-polarized Front-to-back ratio are specified.
- *4 : Qty 1



Region	United States	Europe, Middle East and Africa	Caribbean and Latin America	Canada and rest of the world
Telephone	USA: 1 800 263 3275	International: +44 (0) 1487 84 28 19	International: +1 905 726 7676	Canada: 1 800 263 3275 International: +1 905 727 0165
E-mail	salesusa@sinctech.com	salesuk@sinctech.com	salesla@sinctech.com	salescan@sinctech.com