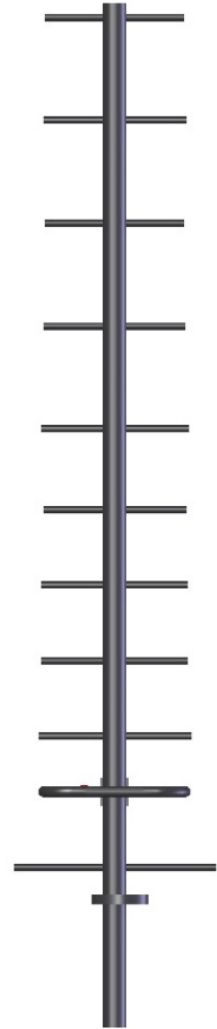


SY415-SFXSNF(ABK) Yagi directional, 12 dBd, black anodized, 902-956 MHz

- 12 dBd gain, covering the entire 902-956 MHz frequency range
- This 11-element Yagi can be used in a variety of applications
- Can be stacked for additional gain
- Black anodized

The SY415 series of Yagi antennas has been developed to meet the need for a high gain, relatively wide-band antenna in the 902-956 MHz range. Designed for superior performance and versatility, this 11-element Yagi fills a variety of application needs.



www.sinctech.com

| Region                                    | United States         | Europe, Middle East and Africa       | Caribbean and Latin America    | Canada and rest of the world                             |
|---|-----------------------|--------------------------------------|--------------------------------|--|
| <b>Telephone</b>                          | USA: 1 800 263 3275   | International: +44 (0) 1487 84 28 19 | International: +1 905 726 7676 | Canada: 1 800 263 3275<br>International: +1 905 727 0165 |
| <b>E-mail</b>                             | salesusa@sinctech.com | salesuk@sinctech.com                 | salesla@sinctech.com           | salescan@sinctech.com                                    |
| Product Specification Sheet<br>EPR 015705 |                       | SY415-SFXSNF(ABK)                    | Issue: 2                       | Dated: 14-12-16<br>Dated: 18-11-14                       |

### Electrical Specifications

|                            |           |                        |    |
|----------------------------|-----------|------------------------|----|
| Frequency Range            | MHz       | 902 to 956             |    |
| Bandwidth                  | MHz       | 54                     |    |
| Connector                  |           | N-Female               |    |
| Gain (nominal)             | dBd (dBi) | 12 (14.1)              |    |
| Input VSWR (max)           |           | 1.5:1                  |    |
| Polarization               |           | vertical or horizontal |    |
| Pattern                    |           | Directional            |    |
| Horizontal beamwidth (typ) | degrees   | 42                     | *1 |
| Vertical beamwidth (typ)   | degrees   | 37                     | *2 |
| Average Power Input (max)  | W         | 125                    |    |
| Lightning protection       |           | DC ground              |    |
| Front-to-back ratio (typ)  | dB        | 20                     | *3 |

### Mechanical Specifications

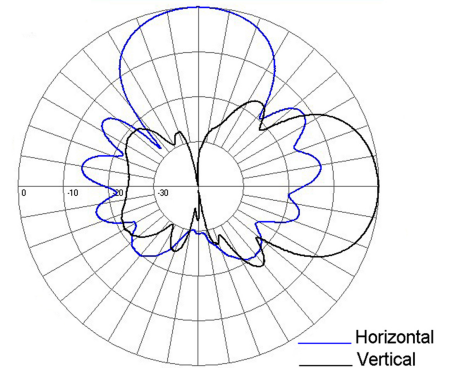
|                              |          |                        |    |
|------------------------------|----------|------------------------|----|
| Width                        | in (mm)  | 6.4 (163)              |    |
| Length/ Height               | in (mm)  | 37.5 (953)             |    |
| Finish                       |          | anodize (black)        |    |
| Weight                       | lbs (kg) | 2.7 (1.23)             |    |
| Mounting Hardware (Included) |          | Clamp115               | *4 |
| Actual shipping weight       | lbs (kg) | 5 (2.27)               |    |
| Shipping dimensions          | in (mm)  | 47x6x18 (1194x152x457) |    |

### Environmental Specifications

|   |             |                          |
|---|-------------|--------------------------|
| Temperature range                         | °F (°C)     | -40 to +140 (-40 to +60) |
| Wind Loading Area (Flat Plate Equivalent) | ft² (m²)    | 0.2 (0.02)               |
| Rated wind velocity (no ice)              | mph (km/h)  | 200 (322)                |
| Rated wind velocity (1/2" radial ice)     | mph (km/h)  | 110 (177)                |
| Lateral thrust (100 mph No Ice)           | lbs (N)     | 32 (142.3)               |
| Torsional moment (100 mph No Ice)         | ft-lbs (Nm) | 49 (66.2)                |

### Notes

- \*1 : values based on Vertical polarization
- \*2 : values based on Vertical polarization
- \*3 : For dual-polarization antenna both the total and co-polarized Front-to-back ratio are specified.
- \*4 : Qty 1



| Region           | United States          | Europe, Middle East and Africa       | Caribbean and Latin America    | Canada and rest of the world                             |
|------------------|------------------------|--------------------------------------|--------------------------------|--|
| <b>Telephone</b> | USA: 1 800 263 3275    | International: +44 (0) 1487 84 28 19 | International: +1 905 726 7676 | Canada: 1 800 263 3275<br>International: +1 905 727 0165 |
| <b>E-mail</b>    | salesusa@sinclaire.com | salesuk@sinclaire.com                | salesla@sinclaire.com          | salescan@sinclaire.com                                   |