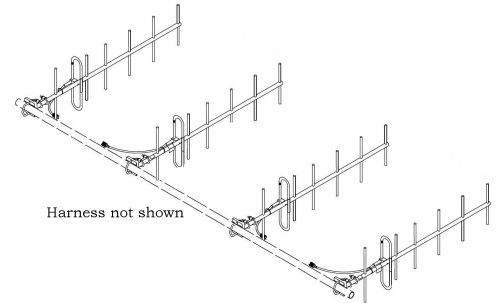


SY4064-SF4SNM(ABK) Quad yagi directional antenna, 15.5 dBd, 895-966 MHz

- Quad array: Antennas are vertically polarized and mounted horizontally in parallel as shown.
- Designed to meet Category A Classification
- 15.5 dBd gain with low VSWR
- Designed for high performance, versatility and ease of installation

The SY4064 yagi array antenna was developed to meet the need for a high gain, narrow horizontal beamwidth, broadband, top quality directional antenna in the 895-966 MHz frequency range. The SY4064 provides 15.5 dBd gain with a low VSWR.

Note: Support pipe not included with antenna.



www.sinctech.com

Region	United States	Europe, Middle East and Africa	Caribbean and Latin America	Canada and rest of the world
Telephone	USA: 1 800 263 3275	International: +44 (0) 1487 84 28 19	International: +1 905 726 7676	Canada: 1 800 263 3275 International: +1 905 727 0165
E-mail	salesusa@sinctech.com	salesuk@sinctech.com	salesla@sinctech.com	salescan@sinctech.com

Electrical Specifications

Frequency Range	MHz	895 to 966	
Connector		N-Male	
Gain (nominal)	dBd (dBi)	15.5 (17.6)	
VSWR (max)		1.5:1	
Polarization		vertical or horizontal	
Pattern		Directional	
Horizontal beamwidth (typ)	degrees	12	*1
Vertical beamwidth (typ)	degrees	41	*2
Average Power Input (max)	W	125	
Lightning protection		DC ground	
Front-to-back ratio (typ)	dB	20	

Mechanical Specifications

Width	in (mm)	4.6 (117)	
Depth	in (mm)	68.5 (1740)	
Weight	lbs (kg)	11.5 (5.22)	
Weight iced (1/2" ice)	lbs (kg)	53 (24.06)	
Mounting Hardware (Included)		#115 clamp	
Actual shipping weight	lbs (kg)	27 (12.26)	
Shipping dimensions	in (mm)	28x6x8 (711x152x203)	*3

Environmental Specifications

Temperature range	°F (°C)	-40 to +140 (-40 to +60)
Wind Loading Area (Flat Plate Equivalent)	ft² (m²)	2.11 (0.2)
Wind Loading Area (1/2" ice)	ft² (m²)	5.9 (0.55)
Rated wind velocity (no ice)	mph (km/h)	175 (282)
Rated wind velocity (1/2" radial ice)	mph (km/h)	95 (153)
Lateral thrust (100 mph No Ice)	lbs (N)	56 (249.1)
Bending moment (100 mph No Ice)	ft-lbs (Nm)	17.5 (23.6)

Notes

- *1 : Depends on configuration, consult table below for beamwidth.
- *2 : Depends on configuration, consult table below for beamwidth.
- *3 : 4 Packages

Polarization	Stacking	Horizontal	Vertical
Vertical	Vertical	46	10
Vertical	Horizontal	12	41
Horizontal	Vertical	41	12
Horizontal	Horizontal	10	46
Horizontal	2 X 2	21	23
Vertical	2 X 2	23	21

Region	United States	Europe, Middle East and Africa	Caribbean and Latin America	Canada and rest of the world
Telephone	USA: 1 800 263 3275	International: +44 (0) 1487 84 28 19	International: +1 905 726 7676	Canada: 1 800 263 3275 International: +1 905 727 0165
E-mail	salesusa@sinclaire.com	salesuk@sinclaire.com	salesla@sinclaire.com	salescan@sinclaire.com