

SY4062-SF4SNM(ABK) Yagi directional, 13 dBd, dual, 895-966 MHz

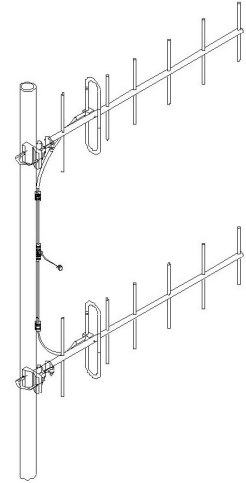
Also referred as: SRL406-2*4

- Dual array
- 10 dBd gain with low VSWR
- Designed for high performance, versatility and ease of installation

The SY4062 yagi array antenna was developed to meet the need for a high gain, broadband, top quality directional antenna in the 806-966 MHz frequency range. The SY4062 provides 13 dBd gain with a low VSWR.

Designed for high performance, versatility and ease of installation, the SY4062 will fill a wide variety of requirements.

All elements are at DC ground potential for lightning protection.



| Polarization | Stacking | H Plane | E Plane |
|--------------|------------|---------|---------|
| Vertical | Vertical | 46 | 21 |
| Vertical | Horizontal | 23 | 41 |
| Horizontal | Vertical | 41 | 23 |
| Horizontal | Horizontal | 21 | 46 |

| Region | United States | Europe, Middle East and Africa | Caribbean and Latin America | Canada and rest of the world |
|------------------|-----------------------|--------------------------------------|--------------------------------|--|
| Telephone | USA: 1 800 263 3275 | International: +44 (0) 1487 84 28 19 | International: +1 905 726 7676 | Canada: 1 800 263 3275 International: +1 905 727 0165 |
| E-mail | salesusa@sinctech.com | salesuk@sinctech.com | salesla@sinctech.com | salescan@sinctech.com |

Electrical Specifications

| | | |
|---------------------------|-----------|------------------------|
| Frequency Range | MHz | 895 to 966 |
| Bandwidth | MHz | 71 |
| Connector | | N-Male |
| Gain (nominal) | dBd (dBi) | 13 (15.1) |
| Polarization | | vertical or horizontal |
| Pattern | | Directional |
| Average Power Input (max) | W | 125 |
| Lightning protection | | DC ground |
| Front-to-back ratio (typ) | dB | 20 |

Mechanical Specifications

| | | |
|------------------------------|----------|--------------------------|
| Width | in (mm) | 24 (610) |
| Depth | in (mm) | 7.1 (180) |
| Length/ Height | in (mm) | 24 (610) |
| Radiating element material | | aluminum |
| Weight | lbs (kg) | 2.78 (1.26) |
| Weight iced (1/2" ice) | lbs (kg) | 13.1 (5.95) |
| Mounting Hardware (Included) | | Clamp115 |
| Actual shipping weight | lbs (kg) | 7 (3.18) |
| Shipping dimensions | in (mm) | 43x9x4 (1092x229x102) *1 |

Environmental Specifications

| | | |
|---|-----------------------------------|--------------------------|
| Temperature range | °F (°C) | -40 to +140 (-40 to +60) |
| Wind Loading Area (Flat Plate Equivalent) | ft ² (m ²) | 0.53 (0.05) *2 |
| Wind Loading Area (1/2" ice) | ft ² (m ²) | 1.48 (0.14) *3 |
| Rated wind velocity (no ice) | mph (km/h) | 150 (242) |
| Rated wind velocity (1/2" radial ice) | mph (km/h) | 85 (137) |
| Lateral thrust (100 mph No Ice) | lbs (N) | 13.8 (61.4) |
| Bending moment (100 mph No Ice) | ft-lbs (Nm) | 5.26 (7.1) |

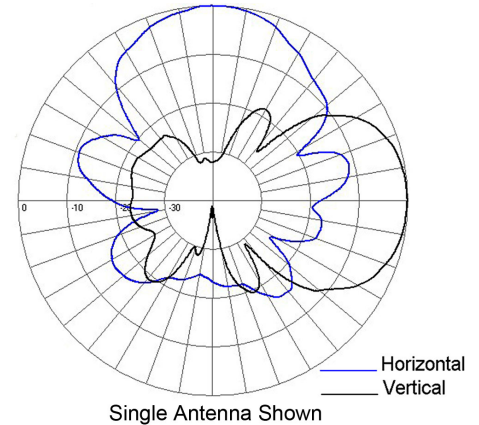
Notes

- *1 : 2 packages
- *2 : For yagi in the 895-966 MHz band
- *3 : For yagi in the 895-966 MHz band

Ordering Information

The SY4062 is available in 5 sub-bands to cover the 806-966 MHz band:

| | |
|-----------------|-----------------|
| F1- 806-870 MHz | F4- 895-966 MHz |
| F2- 824-896 MHz | F5- 876-925 MHz |
| F3- 846-913 MHz | |



| Region | United States | Europe, Middle East and Africa | Caribbean and Latin America | Canada and rest of the world |
|------------------|-----------------------|--------------------------------------|--------------------------------|--|
| Telephone | USA: 1 800 263 3275 | International: +44 (0) 1487 84 28 19 | International: +1 905 726 7676 | Canada: 1 800 263 3275 International: +1 905 727 0165 |
| E-mail | salesusa@sinctech.com | salesuk@sinctech.com | salesla@sinctech.com | salescan@sinctech.com |