

SY4062-SF1SNM(ABK) Yagi directional, 13 dBd, dual, 806-870 MHz

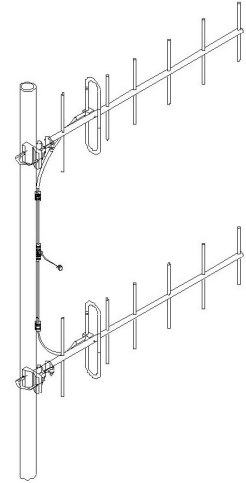
Also referred as: SRL406-2\*1

- Dual array
- 13dBd gain with low VSWR
- Designed for high performance, versatility and ease of installation

The SY4062 yagi array antenna was developed to meet the need for a high gain, broadband, top quality directional antenna in the 806-966 MHz frequency range. The SY4062 provides 13 dBd gain with a low VSWR.

Designed for high performance, versatility and ease of installation, the SY4062 will fill a wide variety of requirements.

All elements are at DC ground potential for lightning protection.



Polarization	Stacking	H Plane	E Plane
Vertical	Vertical	46	21
Vertical	Horizontal	23	41
Horizontal	Vertical	41	23
Horizontal	Horizontal	21	46

Region	United States	Europe, Middle East and Africa	Caribbean and Latin America	Canada and rest of the world
<b>Telephone</b>	USA: 1 800 263 3275	International: +44 (0) 1487 84 28 19	International: +1 905 726 7676	Canada: 1 800 263 3275 International: +1 905 727 0165
<b>E-mail</b>	salesusa@sincltech.com	salesuk@sincltech.com	salesla@sincltech.com	salescan@sincltech.com

### Electrical Specifications

Frequency Range	MHz	806 to 870
Bandwidth	MHz	64
Connector		N-Male
Gain (nominal)	dBd (dBi)	13 (15.1)
Polarization		vertical or horizontal
Pattern		Directional
Average Power Input (max)	W	125
Lightning protection		DC ground
Front-to-back ratio (typ)	dB	20

### Mechanical Specifications

Width	in (mm)	24 (610)
Depth	in (mm)	7.1 (180)
Length/ Height	in (mm)	24 (610)
Radiating element material		aluminum
Weight	lbs (kg)	2.78 (1.26)
Weight iced (1/2" ice)	lbs (kg)	13.1 (5.95)
Mounting Hardware (Included)		Clamp115
Actual shipping weight	lbs (kg)	7 (3.18)
Shipping dimensions	in (mm)	43x9x4 (1092x229x102) *1

### Environmental Specifications

Temperature range	°F (°C)	-40 to +140 (-40 to +60)
Wind Loading Area (Flat Plate Equivalent)	ft <sup>2</sup> (m <sup>2</sup> )	0.53 (0.05) *2
Wind Loading Area (1/2" ice)	ft <sup>2</sup> (m <sup>2</sup> )	1.48 (0.14) *3
Rated wind velocity (no ice)	mph (km/h)	150 (242)
Rated wind velocity (1/2" radial ice)	mph (km/h)	85 (137)
Lateral thrust (100 mph No Ice)	lbs (N)	13.8 (61.4)
Bending moment (100 mph No Ice)	ft-lbs (Nm)	5.26 (7.1)

### Notes

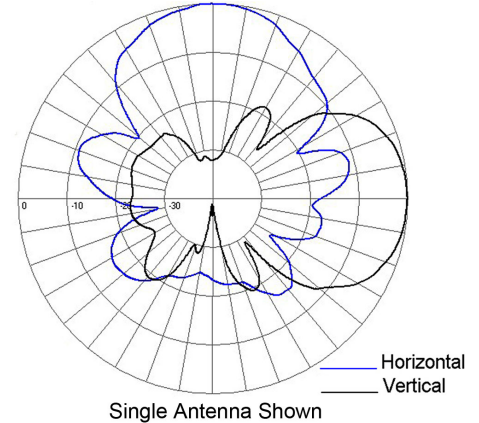
- \*1 : 2 packages
- \*2 : For yagi in the 895-966 MHz band
- \*3 : For yagi in the 895-966 MHz band

### Ordering Information

The SY4062 is available in 7 sub-bands to cover the 806-966 MHz band:

F1- 806-870 MHz	F4- 895-866 MHz	F7- 746-806 MHz
F2- 824-896 MHz	F5- 835-900 MHz	
F3- 846-913 MHz	F6- 920-985 MHz	

Note: Shipped in two boxes.



Region	United States	Europe, Middle East and Africa	Caribbean and Latin America	Canada and rest of the world
<b>Telephone</b>	USA: 1 800 263 3275	International: +44 (0) 1487 84 28 19	International: +1 905 726 7676	Canada: 1 800 263 3275 International: +1 905 727 0165
<b>E-mail</b>	salesusa@sinctech.com	salesuk@sinctech.com	salesla@sinctech.com	salescan@sinctech.com