

SY406-SF7LNF(ABK) Yagi directional, 10 dBd, black anodized, low PIM, 746-806 MHz

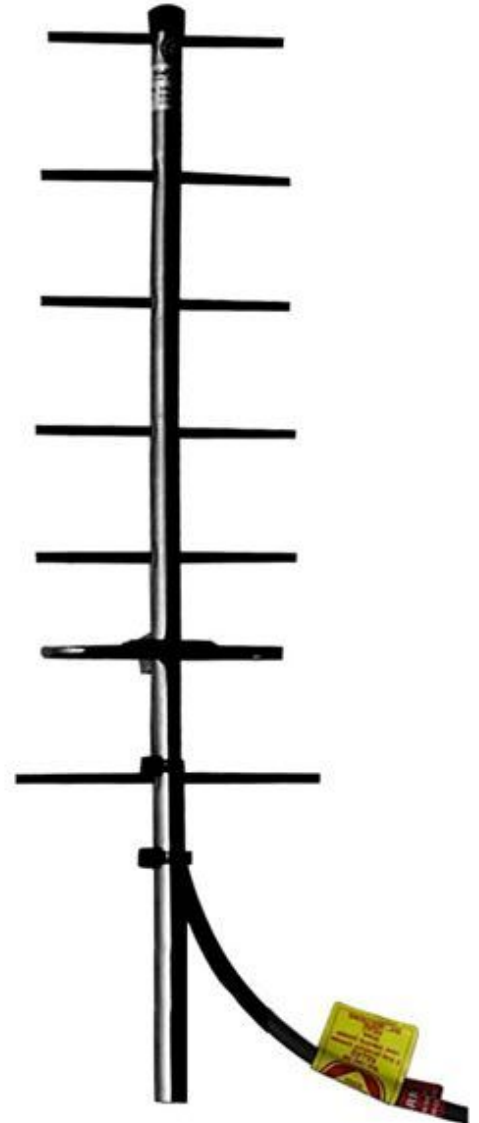
- Black anodized aluminum for long life
- 360 degree welded elements for durability and reliability
- 10 dBd gain with low VSWR
- -140 dBc low PIM design and 400 Watt power handling

The SY406 yagi antenna has been developed to meet the need for a high gain, broadband, top quality directional antenna, and it covers the 728-985 MHz frequency range in multiple band splits. The SY406 provides 10 dBd gain with a low VSWR. Designed for high performance, versatility and ease of installation, the SY406 will fill a wide variety of requirements. All elements are at DC ground potential for lightning protection.

The SY406 is available in phased arrays for additional gain.

### Application Notes

- Stacking of yagis provides increased gain. Stacking kits are available for 2 and 4 antenna configurations



www.sinctech.com

Region	United States	Europe, Middle East and Africa	Caribbean and Latin America	Canada and rest of the world
Telephone	USA: 1 800 263 3275	International: +44 (0) 1487 84 28 19	International: +1 905 726 7676	Canada: 1 800 263 3275 International: +1 905 727 0165
E-mail	salesusa@sinctech.com	salesuk@sinctech.com	salesla@sinctech.com	salescan@sinctech.com

### Electrical Specifications

Frequency Range	MHz	746 to 806
Bandwidth	MHz	60
Connector		N-Female *1
Gain (nominal)	dBd (dBi)	10 (12.1)
Input VSWR (max)		1.5:1
Polarization		vertical or horizontal
Impedance	Ω	50
Pattern		Directional
Horizontal beamwidth (typ)	degrees	52
Vertical beamwidth (typ)	degrees	45
Average Power Input (max)	W	400
Passive intermod. (2x20W, 3rd ord.)	dBc	-140
Lightning protection		DC ground
Front-to-back ratio (typ)	dB	20

### Notes

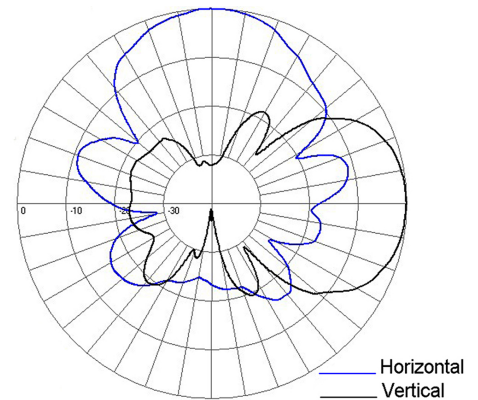
- \*1 : N-male also available
- \*2 : Qty 1

### Mechanical Specifications

Width	in (mm)	7.08 (180)
Depth	in (mm)	2.63 (67)
Length/ Height	in (mm)	24 (610)
Radiating element material		aluminum
Reflector material		aluminum
Finish		anodize black
Weight	lbs (kg)	1.06 (0.48)
Weight iced (1/2" ice)	lbs (kg)	4.7 (2.13)
Mounting Hardware (Included)		Clamp115 *2
Actual shipping weight	lbs (kg)	5 (2.27)
Shipping dimensions	in (mm)	43x8.4x3.2 (1092x213x81)

### Ordering Information

These antennas can be provided with various cable length upon request.



### Environmental Specifications

Temperature range	°F (°C)	-40 to +140 (-40 to +60)
Wind Loading Area (Flat Plate Equivalent)	ft² (m²)	0.18 (0.02)
Wind Loading Area (1/2" ice)	ft² (m²)	0.53 (0.05)
Rated wind velocity (no ice)	mph (km/h)	150 (242)
Rated wind velocity (1/2" radial ice)	mph (km/h)	85 (137)
Lateral Thrust (100 mph No Ice)	lbs (N)	7 (31.1)
Bending moment (100 mph No Ice)	ft-lbs (Nm)	5.26 (7.1)

Region	United States	Europe, Middle East and Africa	Caribbean and Latin America	Canada and rest of the world
Telephone	USA: 1 800 263 3275	International: +44 (0) 1487 84 28 19	International: +1 905 726 7676	Canada: 1 800 263 3275 International: +1 905 727 0165
E-mail	salesusa@sinctech.com	salesuk@sinctech.com	salesla@sinctech.com	salescan@sinctech.com