

SY406-SF6SNM(ABK) Yagi directional, 10 dBd, black anodized, 920-985 MHz

Also referred as: SRL406NM*6

- Anodized high-grade aluminum.
- 360 degree welded elements, completely sealed dipole for durability in harsh environments.
- 10dBd gain with low VSWR in very compact size.

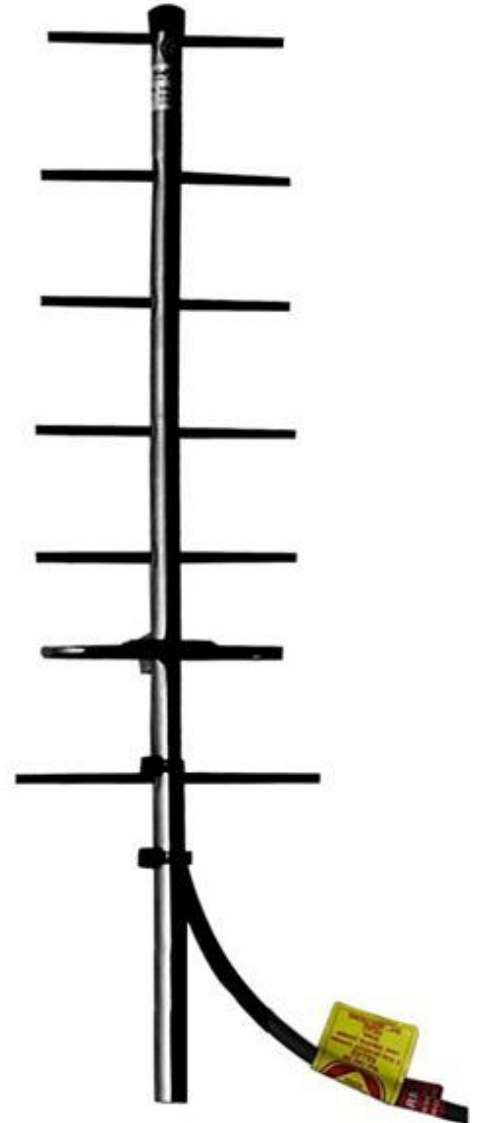
The SY406 yagi antenna has been developed to meet the need for a high gain, broadband, top quality directional antenna in the 746-985 MHz frequency range. The SY406 provides 10 dBd gain with a low VSWR.

Designed for high performance, versatility and ease of installation, the SY406 will fill a wide variety of requirements.

All elements are at DC ground potential for lightning protection.

Application Notes

- Stacking of yagis provides increased gain. Stacking kits are available for 2 and 4 antenna configurations



www.sinctech.com

Region	United States	Europe, Middle East and Africa	Caribbean and Latin America	Canada and rest of the world
Telephone	USA: 1 800 263 3275	International: +44 (0) 1487 84 28 19	International: +1 905 726 7676	Canada: 1 800 263 3275 International: +1 905 727 0165
E-mail	salesusa@sinctech.com	salesuk@sinctech.com	salesla@sinctech.com	salescan@sinctech.com
Product Specification Sheet EPR 017805 Customer Tech Manual 005391		SY406-SF6SNM(ABK)	Issue: 78	Dated: 14-12-16 Dated: 01-10-13
Sinclair's commitment to product leadership may result in improvement or change to this product Copyright © Sinclair Technologies				

Electrical Specifications

Frequency Range	MHz	920 to 985
Bandwidth	MHz	65
Connector		N-Male *1
Gain (nominal)	dBd (dBi)	10 (12.1)
Input VSWR (max)		1.5:1
Polarization		vertical or horizontal
Impedance	Ω	50
Pattern		Directional
Horizontal beamwidth (typ)	degrees	52
Vertical beamwidth (typ)	degrees	45
Average Power Input (max)	W	125
Lightning protection		DC ground
Front-to-back ratio (typ)	dB	20

Mechanical Specifications

Width	in (mm)	7.08 (180)
Depth	in (mm)	2.63 (67)
Length/ Height	in (mm)	24 (610)
Radiating element material		aluminum
Reflector material		aluminum
Finish		anodize black
Weight	lbs (kg)	1.06 (0.48)
Weight iced (1/2" ice)	lbs (kg)	4.7 (2.13)
Mounting Hardware (Included)		Clamp115 *2
Actual shipping weight	lbs (kg)	5 (2.27)
Shipping dimensions	in (mm)	43x8.4x3.2 (1092x213x81)

Environmental Specifications

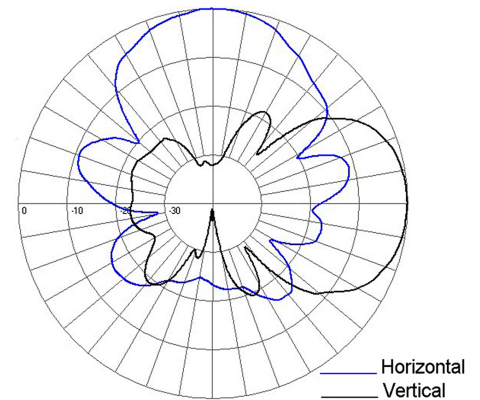
Temperature range	°F (°C)	-40 to +140 (-40 to +60)
Wind Loading Area (Flat Plate Equivalent)	ft² (m²)	0.18 (0.02)
Wind Loading Area (1/2" ice)	ft² (m²)	0.53 (0.05)
Rated wind velocity (no ice)	mph (km/h)	150 (242)
Rated wind velocity (1/2" radial ice)	mph (km/h)	85 (137)
Lateral thrust (100 mph No Ice)	lbs (N)	7 (31.1)
Bending moment (100 mph No Ice)	ft-lbs (Nm)	5.26 (7.1)

Notes

- *1 : N-Female also available.
- *2 : Qty 1

Ordering Information

N-Male connectors are standard, N-Female available as option.
These antennas can be provided with various cable lengths upon request.



Region	United States	Europe, Middle East and Africa	Caribbean and Latin America	Canada and rest of the world
Telephone	USA: 1 800 263 3275	International: +44 (0) 1487 84 28 19	International: +1 905 726 7676	Canada: 1 800 263 3275 International: +1 905 727 0165
E-mail	salesusa@sinctech.com	salesuk@sinctech.com	salesla@sinctech.com	salescan@sinctech.com