

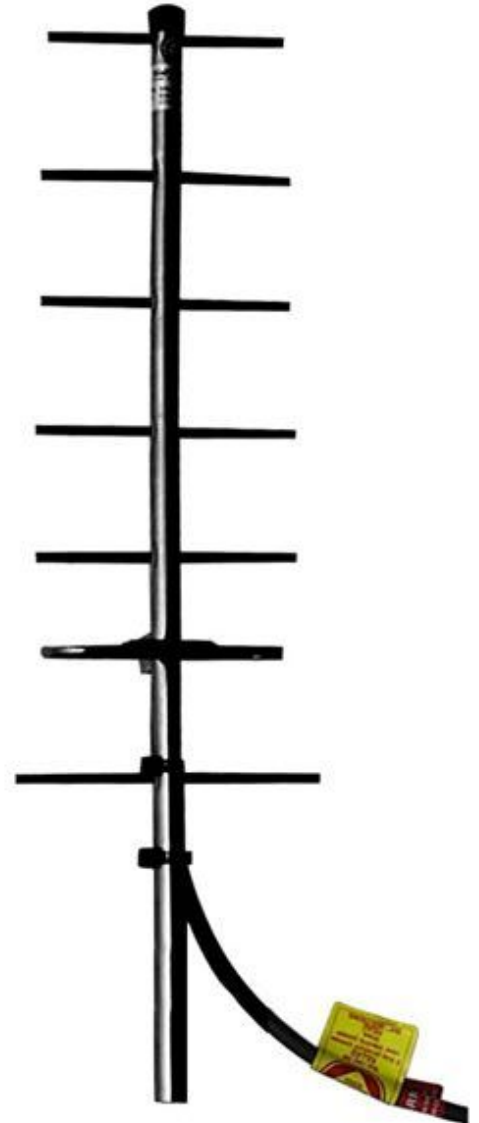
SY406-SF1SNF(ABK) Yagi directional, 10 dBd, black anodized, 806-870 MHz

- Black anodized aluminum for long life
- 360 degree welded elements for durability and reliability
- 10 dBd gain with low VSWR

The SY406 yagi antenna has been developed to meet the need for a high gain, broadband, top quality directional antenna in the 806-960 MHz frequency range. The SY406 provides 10 dBd gain with a low VSWR. Designed for high performance, versatility and ease of installation, the SY406 will fill a wide variety of requirements. All elements are at DC ground potential for lightning protection. The SY406 is available in phased arrays for additional gain.

Application Notes

- Stacking of yagis provides increased gain. Stacking kits are available for 2 and 4 antenna configurations



www.sinctech.com

| Region | United States | Europe, Middle East and Africa | Caribbean and Latin America | Canada and rest of the world |
|------------------|-----------------------|--------------------------------------|--------------------------------|--|
| Telephone | USA: 1 800 263 3275 | International: +44 (0) 1487 84 28 19 | International: +1 905 726 7676 | Canada: 1 800 263 3275 International: +1 905 727 0165 |
| E-mail | salesusa@sinctech.com | salesuk@sinctech.com | salesla@sinctech.com | salescan@sinctech.com |

Electrical Specifications

| | | |
|----------------------------|-----------|------------------------|
| Frequency Range | MHz | 806 to 870 |
| Bandwidth | MHz | 64 |
| Connector | | N-Female |
| Gain (nominal) | dBd (dBi) | 10 (12.1) |
| Input VSWR (max) | | 1.5:1 |
| Polarization | | vertical or horizontal |
| Impedance | Ω | 50 |
| Pattern | | Directional |
| Horizontal beamwidth (typ) | degrees | 52 |
| Vertical beamwidth (typ) | degrees | 45 |
| Average Power Input (max) | W | 125 |
| Lightning protection | | DC ground |
| Front-to-back ratio (typ) | dB | 20 |

Notes

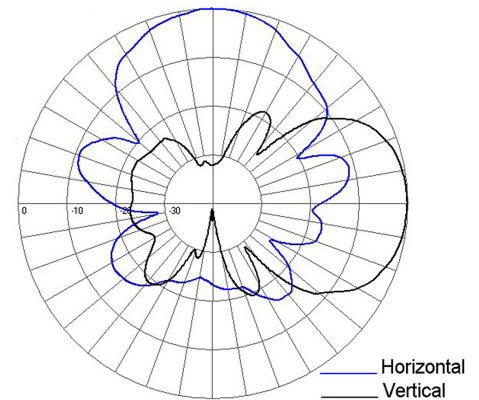
*1 : Qty 1

Mechanical Specifications

| | | |
|------------------------------|----------|--------------------------|
| Width | in (mm) | 7.08 (180) |
| Depth | in (mm) | 2.63 (67) |
| Length/ Height | in (mm) | 24 (610) |
| Radiating element material | | aluminum |
| Reflector material | | aluminum |
| Finish | | anodize black |
| Weight | lbs (kg) | 1.06 (0.48) |
| Weight iced (1/2" ice) | lbs (kg) | 4.7 (2.13) |
| Mounting Hardware (Included) | | Clamp115 |
| Actual shipping weight | lbs (kg) | 5 (2.27) |
| Shipping dimensions | in (mm) | 43x8.4x3.2 (1092x213x81) |

Ordering Information

Specify frequency of operation.



Environmental Specifications

| | | |
|---|-------------|--------------------------|
| Temperature range | °F (°C) | -40 to +140 (-40 to +60) |
| Wind Loading Area (Flat Plate Equivalent) | ft² (m²) | 0.18 (0.02) |
| Wind Loading Area (1/2" ice) | ft² (m²) | 0.53 (0.05) |
| Rated wind velocity (no ice) | mph (km/h) | 150 (242) |
| Rated wind velocity (1/2" radial ice) | mph (km/h) | 85 (137) |
| Lateral Thrust (100 mph No Ice) | lbs (N) | 7 (31.1) |
| Bending moment (100 mph No Ice) | ft-lbs (Nm) | 5.26 (7.1) |

| Region | United States | Europe, Middle East and Africa | Caribbean and Latin America | Canada and rest of the world |
|-----------|-----------------------|--------------------------------------|--------------------------------|--|
| Telephone | USA: 1 800 263 3275 | International: +44 (0) 1487 84 28 19 | International: +1 905 726 7676 | Canada: 1 800 263 3275 International: +1 905 727 0165 |
| E-mail | salesusa@sinctech.com | salesuk@sinctech.com | salesla@sinctech.com | salescan@sinctech.com |