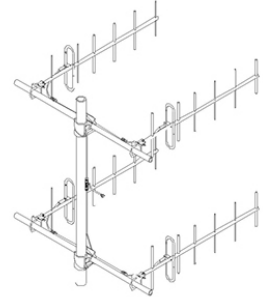


**SY3074-SF5SNM(ABK)** Yagi directional array, 15 dBd, black anodized, quad, 490-512 MHz

Also referred as: SRL307-4\*5

- Four rugged 7-element yagi antenna providing 15 dBd gain
- 3/8 inch aluminum reflector/director elements with 360 degree welds
- Anodized for extended life and superior performance in harsh environments

The SY3074 is four rugged 7-element yagi antenna optimized for 15 dBd gain. Reflector and director elements are 3/8 inch diameter aluminum rods welded with 360 degree welds to a heavy-gauge boom and anodized for extended life and low-PIM performance in heavy ice or corrosive environments.



4-Yagi			
Polarization	Stacking	Beamwidth	
		Horizontal	Vertical
Vertical	Vertical	46	10
Vertical	Horizontal	12	41
Horizontal	Vertical	41	12
Horizontal	Horizontal	10	46
Horizontal	2 X 2	21	23
Vertical	2 X 2	23	21

Region	United States	Europe, Middle East and Africa	Caribbean and Latin America	Canada and rest of the world
<b>Telephone</b>	USA: 1 800 263 3275	International: +44 (0) 1487 84 28 19	International: +1 905 726 7676	Canada: 1 800 263 3275 International: +1 905 727 0165
<b>E-mail</b>	salesusa@sinclaire.com	salesuk@sinclaire.com	salesla@sinclaire.com	salescan@sinclaire.com

### Electrical Specifications

Frequency Range	MHz	490 to 512
Bandwidth	MHz	20
Connector		N-Male
Gain (nominal)	dBd (dBi)	15 (17.1)
Input VSWR (max)		1.5:1
Polarization		vertical or horizontal
Pattern		Directional
Horizontal beamwidth (typ)	degrees	22
Vertical beamwidth (typ)	degrees	19
Average Power Input (max)	W	250
Lightning protection		DC ground
Front-to-back ratio (typ)	dB	20

### Mechanical Specifications

Width	in (mm)	38.5 (978)
Depth	in (mm)	47 (1194)
Length/ Height	in (mm)	57 (1448)
Weight	lbs (kg)	25 (11.35)
Actual shipping weight	lbs (kg)	32 (14.53)
Shipping dimensions	in (mm)	60x8x18 (1524x203x457) *1

### Environmental Specifications

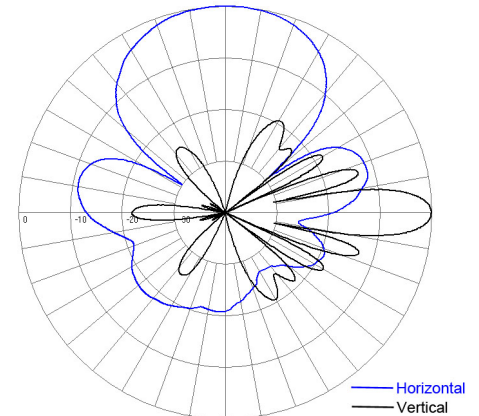
Temperature range	°F (°C)	-40 to +140 (-40 to +60)
Wind Loading Area (Flat Plate Equivalent)	ft² (m²)	2.42 (0.22)
Wind Loading Area (1/2" ice)	ft² (m²)	5.95 (0.55)
Rated wind velocity (no ice)	mph (km/h)	165 (266)
Rated wind velocity (1/2" radial ice)	mph (km/h)	92 (148)
Lateral thrust (100 mph No Ice)	lbs (N)	95 (422.6)
Torsional moment (100 mph No Ice)	ft-lbs (Nm)	141 (190.4)

### Notes

\*1 : 2 per box, 2 boxes total

### Ordering Information

Specify frequency of operation.  
#115 clamps included.



Vertically Stacked, Vertically Polarized

Region	United States	Europe, Middle East and Africa	Caribbean and Latin America	Canada and rest of the world
<b>Telephone</b>	USA: 1 800 263 3275	International: +44 (0) 1487 84 28 19	International: +1 905 726 7676	Canada: 1 800 263 3275 International: +1 905 727 0165
<b>E-mail</b>	salesusa@sinctech.com	salesuk@sinctech.com	salesla@sinctech.com	salescan@sinctech.com