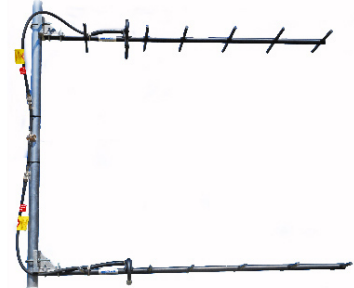


SY3072-SF9SNM(ABK) Yagi directional, dual array, 12.5 dBd, black anodized, 440-460 MHz

Also referred as: SRL307-2*9

- Two rugged 7-element design optimized for 12.5 dBd gain
- 3/8 inch aluminum reflector/director elements with 360 degree welds
- Anodized for extended life and superior performance in harsh environments

The SY3072 is two rugged 7-element yagi antenna optimized for 12.5 dBd gain. Reflector and director elements are 3/8 inch diameter aluminum rods welded with 360 degree welds to a heavy-gauge boom and anodized for extended life and low-PIM performance in heavy ice or corrosive environments.



| Polarization | Stacking | Beamwidth | |
|--------------|------------|-----------|---------|
| | | E-Plane | H-Plane |
| Vertical | Horizontal | 43 | 23 |
| Horizontal | Vertical | 43 | 23 |
| Vertical | Vertical | 19 | 50 |
| Horizontal | Horizontal | 19 | 50 |

| Region | United States | Europe, Middle East and Africa | Caribbean and Latin America | Canada and rest of the world |
|------------------|------------------------|--------------------------------------|--------------------------------|--|
| Telephone | USA: 1 800 263 3275 | International: +44 (0) 1487 84 28 19 | International: +1 905 726 7676 | Canada: 1 800 263 3275 International: +1 905 727 0165 |
| E-mail | salesusa@sincltech.com | salesuk@sincltech.com | salesla@sincltech.com | salescan@sincltech.com |

Electrical Specifications

| | | | |
|----------------------------|-----------|------------------------|----|
| Frequency Range | MHz | 440 to 460 | |
| Bandwidth | MHz | 20 | |
| Connector | | N-Male | |
| Gain (nominal) | dBd (dBi) | 12.5 (14.6) | |
| Input VSWR (max) | | 1.5:1 | |
| Polarization | | vertical or horizontal | |
| Impedance | Ω | 50 | |
| Pattern | | Directional | |
| Horizontal beamwidth (typ) | degrees | 55 | *1 |
| Vertical beamwidth (typ) | degrees | 20 | |
| Average Power Input (max) | W | 250 | |
| Lightning protection | | DC ground | |
| Front-to-back ratio (typ) | dB | 20 | |

Mechanical Specifications

| | | | |
|------------------------------|----------|------------------------|----|
| Width | in (mm) | 17.25 (438) | |
| Depth | in (mm) | 3 (76) | |
| Length/ Height | in (mm) | 46.25 (1175) | *2 |
| Radiating element material | | aluminum | |
| Reflector material | | aluminum | |
| Weight | lbs (kg) | 14 (6.36) | |
| Mounting Hardware (Included) | | Clamp115 | |
| Actual shipping weight | lbs (kg) | 16 (7.26) | |
| Shipping dimensions | in (mm) | 47x6x18 (1194x152x457) | *3 |
| Mounting configurations | | upright | |

Environmental Specifications

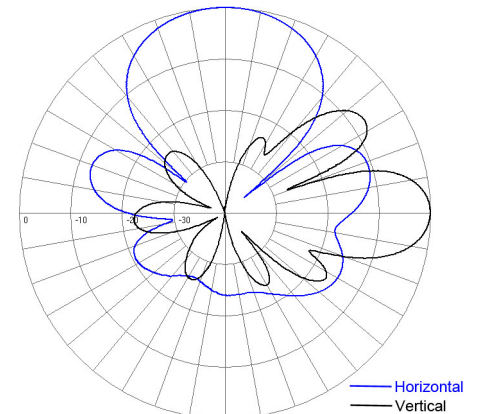
| | | |
|---|-------------|--------------------------|
| Temperature range | °F (°C) | -40 to +140 (-40 to +60) |
| Wind Loading Area (Flat Plate Equivalent) | ft² (m²) | 0.94 (0.09) |
| Wind Loading Area (1/2" ice) | ft² (m²) | 2.52 (0.23) |
| Lateral thrust (100 mph No Ice) | lbs (N) | 36.4 (161.9) |
| Bending moment (100 mph No Ice) | ft-lbs (Nm) | 28.1 (37.9) |

Notes

- *1 : For Horizontal polarized and vertically stacked yagis: Horiz BW=43 +/-3 Vert. BW=24 +/-3
- *2 : Dimensions are for single yagi only
- *3 : 2 packages

Ordering Information

Qty 2- Clamp115 clamps and one support pipe included.



Vertically Stacked, Vertically Polarized

| Region | United States | Europe, Middle East and Africa | Caribbean and Latin America | Canada and rest of the world |
|-----------|-----------------------|--------------------------------------|--------------------------------|--|
| Telephone | USA: 1 800 263 3275 | International: +44 (0) 1487 84 28 19 | International: +1 905 726 7676 | Canada: 1 800 263 3275 International: +1 905 727 0165 |
| E-mail | salesusa@sinctech.com | salesuk@sinctech.com | salesla@sinctech.com | salescan@sinctech.com |