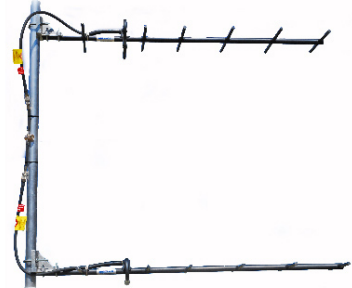


SY3072-SF6SNM(ABK) Yagi directional, dual array, 12.5 dBd, black anodized, 340-360 MHz

Also referred as: SRL307-2*6

- Two rugged 7-element design optimized for 12.5 dBd gain
- 3/8 inch aluminum reflector/director elements with 360 degree welds
- Anodized for extended life and superior performance in harsh environments

The SY3072 is two rugged 7-element yagi antenna optimized for 12.5 dBd gain. Reflector and director elements are 3/8 inch diameter aluminum rods welded with 360 degree welds to a heavy-gauge boom and anodized for extended life and low-PIM performance in heavy ice or corrosive environments.



Polarization	Stacking	Beamwidth	
		E-Plane	H-Plane
Vertical	Horizontal	43	23
Horizontal	Vertical	43	23
Vertical	Vertical	19	50
Horizontal	Horizontal	19	50

www.sinctech.com

Region	United States	Europe, Middle East and Africa	Caribbean and Latin America	Canada and rest of the world
Telephone	USA: 1 800 263 3275	International: +44 (0) 1487 84 28 19	International: +1 905 726 7676	Canada: 1 800 263 3275 International: +1 905 727 0165
E-mail	salesusa@sinctech.com	salesuk@sinctech.com	salesla@sinctech.com	salescan@sinctech.com

Electrical Specifications

Frequency Range	MHz	340 to 360	
Bandwidth	MHz	20	
Connector		N-Male	
Gain (nominal)	dBd (dBi)	12.5 (14.6)	
Input VSWR (max)		1.5:1	
Polarization		vertical or horizontal	
Impedance	Ω	50	
Pattern		Directional	
Horizontal beamwidth (typ)	degrees	55	*1
Vertical beamwidth (typ)	degrees	20	
Average Power Input (max)	W	250	
Lightning protection		DC ground	
Front-to-back ratio (typ)	dB	20	

Mechanical Specifications

Width	in (mm)	17.25 (438)	
Depth	in (mm)	3 (76)	
Length/ Height	in (mm)	46.25 (1175)	*2
Radiating element material		aluminum	
Reflector material		aluminum	
Weight	lbs (kg)	14 (6.36)	
Mounting Hardware (Included)		Clamp115	
Actual shipping weight	lbs (kg)	16 (7.26)	
Shipping dimensions	in (mm)	47x6x18 (1194x152x457)	*3
Mounting configurations		upright	

Environmental Specifications

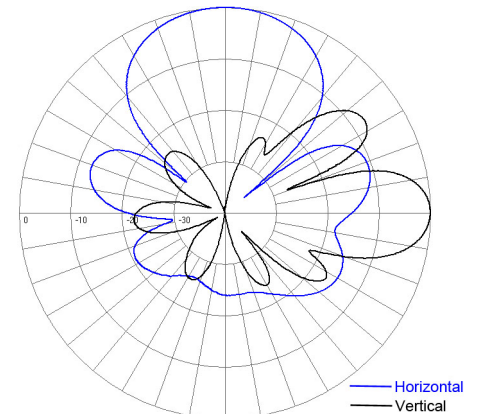
Temperature range	°F (°C)	-40 to +140 (-40 to +60)
Wind Loading Area (Flat Plate Equivalent)	ft² (m²)	0.94 (0.09)
Wind Loading Area (1/2" ice)	ft² (m²)	2.52 (0.23)
Rated wind velocity (no ice)	mph (km/h)	140 (225)
Lateral thrust (100 mph No Ice)	lbs (N)	36.4 (161.9)
Bending moment (100 mph No Ice)	ft-lbs (Nm)	28.1 (37.9)

Notes

- *1 : For Horizontal polarized and vertically stacked yagis: Horiz BW=43 +/-3/Vert. BW=24 +/-3
- *2 : Dimensions are for single yagi only
- *3 : 2 packages

Ordering Information

Qty 2- Clamp115 clamps and one support pipe included.



Vertically Stacked, Vertically Polarized

Region	United States	Europe, Middle East and Africa	Caribbean and Latin America	Canada and rest of the world
Telephone	USA: 1 800 263 3275	International: +44 (0) 1487 84 28 19	International: +1 905 726 7676	Canada: 1 800 263 3275 International: +1 905 727 0165
E-mail	salesusa@sinctech.com	salesuk@sinctech.com	salesla@sinctech.com	salescan@sinctech.com