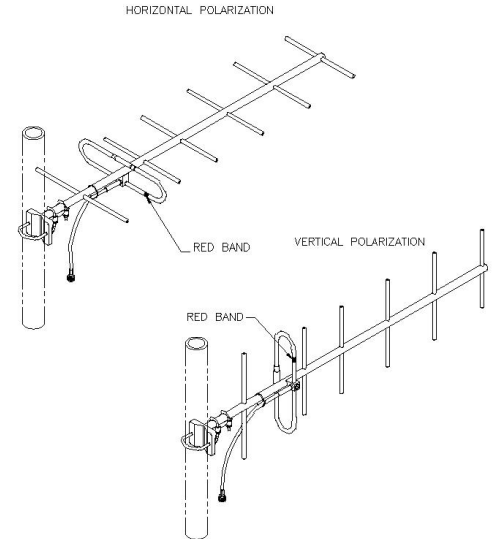


SY307-SF12SNM(ABK) Yagi directional, 10 dBd, black anodized, 500-520 MHz

- Rugged 7-element 10 dBd gain yagi antenna.
- Reflector and director elements are 3/8 inch diameter aluminum rods.
- 360 degree welds to the boom and anodized for increased durability and extended life.

The SY307 is a rugged 7-element 10 dBd gain yagi antenna. Reflector and director elements are 3/8 inch diameter aluminum rods welded with 360 degree welds to the boom and anodized for increased durability and extended life.



Region	United States	Europe, Middle East and Africa	Caribbean and Latin America	Canada and rest of the world
Telephone	USA: 1 800 263 3275	International: +44 (0) 1487 84 28 19	International: +1 905 726 7676	Canada: 1 800 263 3275 International: +1 905 727 0165
E-mail	salesusa@sincltech.com	salesuk@sincltech.com	salesla@sincltech.com	salescan@sincltech.com

Electrical Specifications

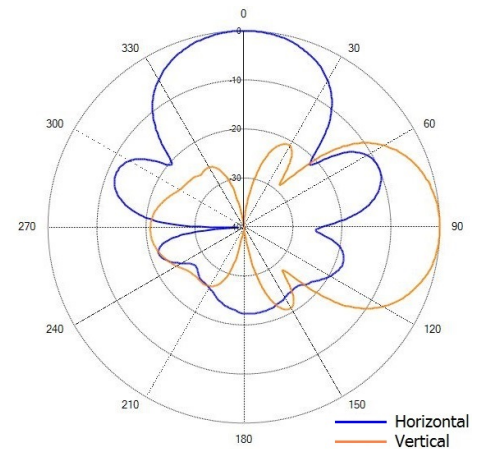
Frequency Range	MHz	500 to 520
Bandwidth	MHz	20
Connector		N-Male
Gain (nominal)	dBd (dBi)	10 (12.1)
Input VSWR (max)		1.5:1
Polarization		vertical or horizontal
Impedance	Ω	50
Pattern		Directional
Horizontal beamwidth (typ)	degrees	55
Vertical beamwidth (typ)	degrees	41
Average Power Input (max)	W	250
Lightning protection		DC ground
Front-to-back ratio (typ)	dB	20

Mechanical Specifications

Width	in (mm)	11.8 (300)
Depth	in (mm)	3 (76)
Length/ Height	in (mm)	34.7 (881)
Radiating element material		aluminum
Reflector material		aluminum
Finish		anodize black
Weight	lbs (kg)	2.6 (1.18)
Mounting Hardware (Included)		Clamp115
Actual shipping weight	lbs (kg)	7.4 (3.36)
Shipping dimensions	in (mm)	36x6x13 (914x152x330)

Environmental Specifications

Temperature range	°F (°C)	-40 to +140 (-40 to +60)
Wind Loading Area (Flat Plate Equivalent)	ft² (m²)	0.34 (0.03)
Wind Loading Area (1/2" ice)	ft² (m²)	0.92 (0.09)
Rated wind velocity (no ice)	mph (km/h)	190 (306)
Rated wind velocity (1/2" radial ice)	mph (km/h)	135 (217)
Lateral thrust (100 mph No Ice)	lbs (N)	13.6 (60.5)
Bending moment (100 mph No Ice)	ft-lbs (Nm)	16.4 (22.1)



Region	United States	Europe, Middle East and Africa	Caribbean and Latin America	Canada and rest of the world
Telephone	USA: 1 800 263 3275	International: +44 (0) 1487 84 28 19	International: +1 905 726 7676	Canada: 1 800 263 3275 International: +1 905 727 0165
E-mail	salesusa@sinctech.com	salesuk@sinctech.com	salesla@sinctech.com	salescan@sinctech.com