

SY2066-HF9SNM(E-HT-ABK) 6 Yagi array, 15.5 dBd, heated elements, E.B., 130-136 MHz

- Six yagi array with heated elements and boom
- Outstanding durability and performance
- DC ground potential for lightning protection

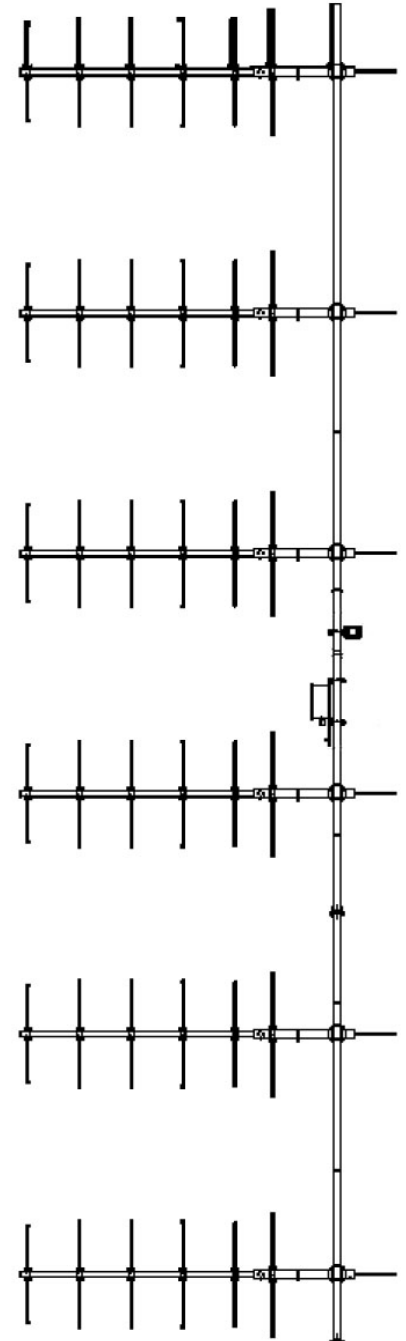
Sinclair's new line of heated yagis utilizes an innovative design to provide maximum performance and reliability under the toughest weather conditions. A special heating mechanism is applied in the design, together with the black anodized surface to help minimize icing during the harsh winter. The heating element automatically adjusts the power it draws depending on the temperature for both energy saving and the best de-icing effect. The same heating mechanism can be applied to all of our SY206 antennas, covering a wider range of frequencies, and construction types (such as standard and heavy duty models).

The SY2066 antenna consists of a 6- six element yagis of outstanding durability and performance. All elements including the folded dipole are maintained at DC Ground potential for lightning protection. All elements on this antenna are attached to the boom with solid cast aluminum clamps. This highly versatile antenna is supplied as a standard mount yagi, or, as an end-boom mounted unit.

All antennas and the TT AC Box are to be UL approved to standards SPE-1000 and CSA C 22.2 No.72.

Application Notes

- Patterns shown are for a single SY206-HF9SNM.



www.sinctech.com

Region	United States	Europe, Middle East and Africa	Caribbean and Latin America	Canada and rest of the world
Telephone	USA: 1 800 263 3275	International: +44 (0) 1487 84 28 19	International: +1 905 726 7676	Canada: 1 800 263 3275 International: +1 905 727 0165
E-mail	salesusa@sinctech.com	salesuk@sinctech.com	salesla@sinctech.com	salescan@sinctech.com

Electrical Specifications

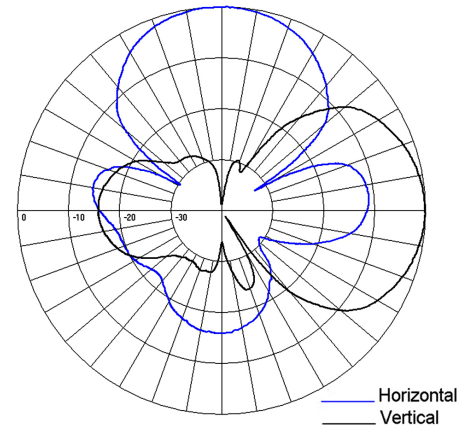
Frequency Range	MHz	130 to 136
Bandwidth	MHz	6
Connector		Cable mounted N-male
Gain (nominal)	dBd (dBi)	15.5 (17.6)
Input VSWR (max)		1.5:1
Polarization		vertical or horizontal *1
Impedance	Ω	50
Pattern		Directional
Horizontal beamwidth (typ)	degrees	56
Vertical beamwidth (typ)	degrees	8.5
Horizontal beamwidth (Vert. Pol.)	degrees	60
Vertical beamwidth (Vert. Pol.)	degrees	47
Average Power Input (max)	W	200
Lightning protection		DC ground in harness
Front-to-back ratio (typ)	dB	17

Notes

- *1 : 6:1
- *2 : per package of six.
- *3 : Heating system works down to -15 degrees C.

Mechanical Specifications

Width	in (mm)	467 (11862)
Depth	in (mm)	5.75 (146)
Length/ Height	in (mm)	126.56 (3215)
Base pipe diameter	in (mm)	2.88 (73)
Radiating element material		aluminum
Reflector material		aluminum
Weight	lbs (kg)	171 (77.63)
Weight iced (1/2" ice)	lbs (kg)	414 (187.96)
Mounting Hardware (Included)		Clamp064
Mounting hardware		Doughnut clamp
Actual shipping weight	lbs (kg)	264 (119.86)
Shipping dimensions	in (mm)	132x48x6 (3353x1219x152) *2



Environmental Specifications

Temperature range	°F (°C)	-40 to +140 (-40 to +60) *3
Wind Loading Area (Flat Plate Equivalent)	ft² (m²)	15.66 (1.45)
Wind Loading Area (1/2" ice)	ft² (m²)	27.9 (2.59)
Rated wind velocity (no ice)	mph (km/h)	185 (298)
Rated wind velocity (1/2" radial ice)	mph (km/h)	150 (242)
Lateral Thrust (100 mph No Ice)	lbs (N)	558 (2482)
Bending moment (100 mph No Ice)	ft-lbs (Nm)	2352 (3175.2)

Region	United States	Europe, Middle East and Africa	Caribbean and Latin America	Canada and rest of the world
Telephone	USA: 1 800 263 3275	International: +44 (0) 1487 84 28 19	International: +1 905 726 7676	Canada: 1 800 263 3275 International: +1 905 727 0165
E-mail	salesusa@sinctech.com	salesuk@sinctech.com	salesla@sinctech.com	salescan@sinctech.com