

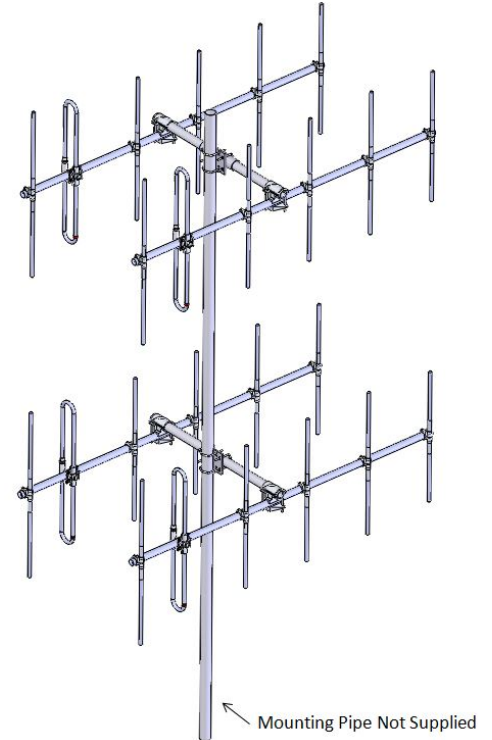
SY2064-SF3SNM(C) Yagi, directional antenna, 14.5 dBd gain, Quad Array, Center Mount, 157-164 MHz

- Six element yagi in a quad array
- Outstanding durability and performance
- DC ground potential for lightning protection

The SY206 antenna consists of a six-element yagi of outstanding durability and performance. All elements including the folded dipole are maintained at DC Ground potential for lightning protection. All elements on this antenna are attached to the boom with solid cast aluminum clamps. This highly versatile antenna is supplied as a standard mount yagi, or, as an end-boom mounted unit. The SY2064 is an array that has been designed to produce additional gain. In the above case, the array is center mounted.

Application Notes

- Specifications based on a vertically polarized 2x2 array.



www.sinclaire.com

Region	United States	Europe, Middle East and Africa	Caribbean and Latin America	Canada and rest of the world
Telephone	USA: 1 800 263 3275	International: +44 (0) 1487 84 28 19	International: +1 905 726 7676	Canada: 1 800 263 3275 International: +1 905 727 0165
E-mail	salesusa@sinclaire.com	salesuk@sinclaire.com	salesla@sinclaire.com	salescan@sinclaire.com

Electrical Specifications

Frequency Range	MHz	157 to 164	
Bandwidth	MHz	7	
Connector		N-Male	
Gain (nominal)	dBd (dBi)	14.5 (16.6)	
Input VSWR (max)		1.5:1	
Polarization		vertical or horizontal	
Pattern		Directional	
Horizontal beamwidth (typ)	degrees	28	*1
Vertical beamwidth (typ)	degrees	23	*2
Average Power Input (max)	W	350	
Lightning protection		DC ground	
Front-to-back ratio (typ)	dB	17	

Mechanical Specifications

Width	in (mm)	109.4 (2779)
Depth	in (mm)	49.75 (1264)
Length/ Height	in (mm)	73.4 (1864)
Base pipe diameter	in (mm)	1.5 (38)
Radiating element material		aluminum
Weight	lbs (kg)	43 (19.52)
Weight iced (1/2" ice)	lbs (kg)	115 (52.21)
Actual shipping weight	lbs (kg)	60 (27.24)
Shipping dimensions	in (mm)	85x14x7 (2159x356x178)

Environmental Specifications

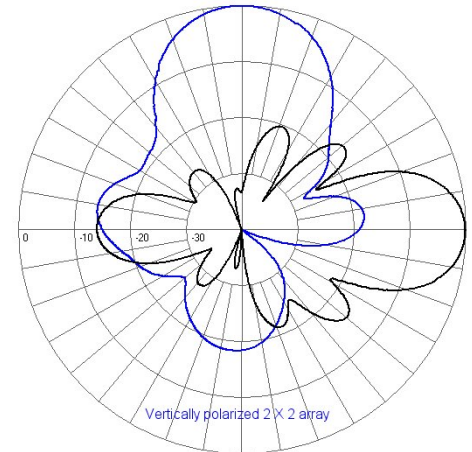
Temperature range	°F (°C)	-40 to +140 (-40 to +60)
Wind Loading Area (Flat Plate Equivalent)	ft ² (m ²)	5.2 (0.48)
Wind Loading Area (1/2" ice)	ft ² (m ²)	10.5 (0.98)
Rated wind velocity (no ice)	mph (km/h)	165 (266)
Rated wind velocity (1/2" radial ice)	mph (km/h)	105 (169)
Lateral thrust (100 mph No Ice)	lbs (N)	112 (498.2)

Notes

- *1 : Based on a vertically polarized 2x2 array. Check table below for other configurations.
 *2 : Based on a vertically polarized 2x2 array. Check table below for other configurations.

Ordering Information

Clamps must be purchased separately.



Polarization	Stacking	BEAMWIDTHS	
		Horizontal	Vertical
Horizontal	2 X 2	23	28
Vertical	2 X 2	28	23

Region	United States	Europe, Middle East and Africa	Caribbean and Latin America	Canada and rest of the world
Telephone	USA: 1 800 263 3275	International: +44 (0) 1487 84 28 19	International: +1 905 726 7676	Canada: 1 800 263 3275 International: +1 905 727 0165
E-mail	salesusa@sinctech.com	salesuk@sinctech.com	salesla@sinctech.com	salescan@sinctech.com