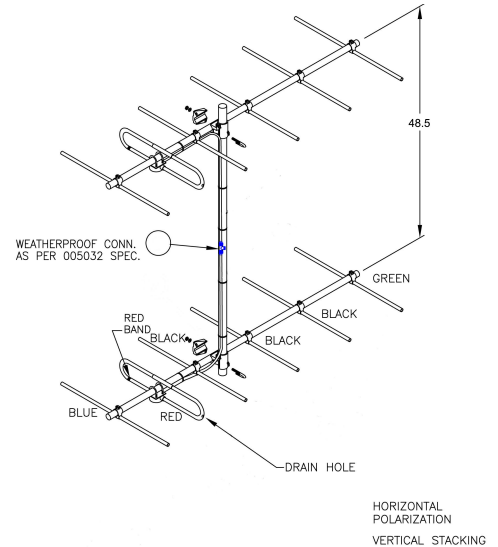


**SY2062-SF5SNM(C)** Yagi directional, dual array, center mount, 12 dBd, 167-174 MHz

- Dual stacked six element Yagi for higher gain
- Does not include mounting pipe
- DC grounded for lightning protection
- Can be arranged horizontally or vertically stacked and horizontally or vertically polarized

The SY206 series of antennas consists of a six-element Yagi of outstanding durability and performance. All elements including the folded dipole are maintained at DC Ground potential for lightning protection. All elements on this antenna are attached to the boom with solid cast aluminum clamps. This highly versatile antenna is supplied as a center mount Yagi. As with other Yagi's, this VHF antenna is available in multiple-unit arrays for added gain. Horizontally or vertically parallel kits of 'H' frames can readily be supplied to mount two or four Yagi's with a common feed.



Region	United States	Europe, Middle East and Africa	Caribbean and Latin America	Canada and rest of the world
<b>Telephone</b>	USA: 1 800 263 3275	International: +44 (0) 1487 84 28 19	International: +1 905 726 7676	Canada: 1 800 263 3275 International: +1 905 727 0165
<b>E-mail</b>	salesusa@sinctech.com	salesuk@sinctech.com	salesla@sinctech.com	salescan@sinctech.com

#### Electrical Specifications

Frequency Range	MHz	167 to 174
Connector		N-Male
Gain (nominal)	dBd (dBi)	12 (14.1)
VSWR (max)		1.5:1
Polarization		vertical or horizontal
Pattern		Directional
Average Power Input (max)	W	300
Lightning protection		DC ground
Front-to-back ratio (typ)	dB	17

#### Mechanical Specifications

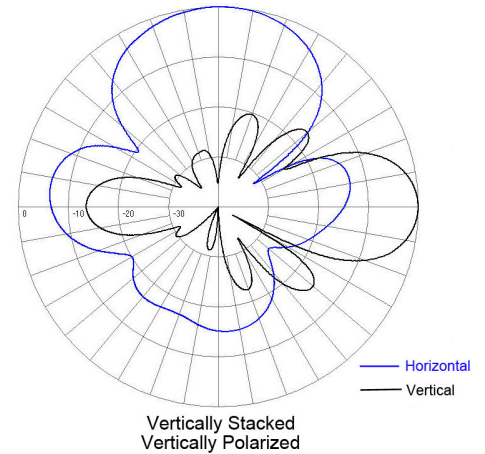
Width	in (mm)	5.5 (140)	
Length/ Height	in (mm)	71 (1803)	
Base pipe diameter	in (mm)	1.5 (38)	
Radiating element material		aluminum	
Reflector material		aluminum	
Weight	lbs (kg)	21.5 (9.76)	
Weight iced (1/2" ice)	lbs (kg)	59 (26.79)	
Mounting Hardware (Included)		Clamp001	*1
Actual shipping weight	lbs (kg)	29 (13.17)	
Shipping dimensions	in (mm)	127x7x8 (3226x178x203)	*2

#### Environmental Specifications

Temperature range	°F (°C)	-40 to +140 (-40 to +60)
Wind Loading Area (Flat Plate Equivalent)	ft <sup>2</sup> (m <sup>2</sup> )	2.51 (0.23)
Wind Loading Area (1/2" ice)	ft <sup>2</sup> (m <sup>2</sup> )	5.1 (0.47)
Rated wind velocity (no ice)	mph (km/h)	165 (266)
Rated wind velocity (1/2" radial ice)	mph (km/h)	105 (169)
Lateral thrust (100 mph No Ice)	lbs (N)	61 (271.3)

#### Notes

- \*1 : Qty 2 included
- \*2 : 2 antennas per box.



Polarization	Stacking	E-Plane	H-Plane
Vertical	Vertical	23	56
Vertical	Horizontal	46	28
Horizontal	Vertical	46	28
Horizontal	Horizontal	23	56

Region	United States	Europe, Middle East and Africa	Caribbean and Latin America	Canada and rest of the world
<b>Telephone</b>	USA: 1 800 263 3275	International: +44 (0) 1487 84 28 19	International: +1 905 726 7676	Canada: 1 800 263 3275 International: +1 905 727 0165
<b>E-mail</b>	salesusa@sinctech.com	salesuk@sinctech.com	salesla@sinctech.com	salescan@sinctech.com