

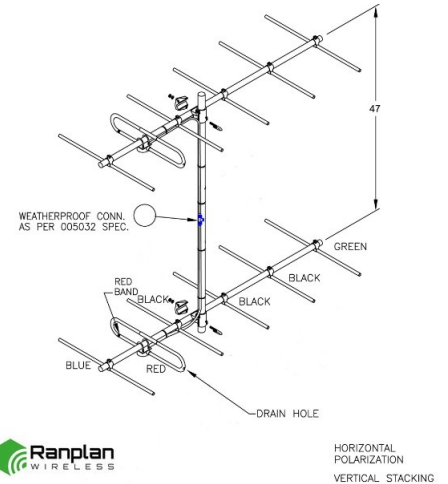
**SY2062-SF3SNM(C)** Yagi directional, dual array, center mount, 12 dBd, 157-164 MHz

- Dual stacked six element Yagi for higher gain
- Does not include mounting pipe
- DC grounded for lightning protection
- Can be arranged horizontally or vertically stacked and horizontally or vertically polarized

The SY206 series of antennas consists of a six-element Yagi of outstanding durability and performance. All elements including the folded dipole are maintained at DC Ground potential for lightning protection. All elements on this antenna are attached to the boom with solid cast aluminum clamps.

This highly versatile antenna is supplied as a standard mount Yagi, or, as an end-boom mounted unit.

As with other Yagi's, this VHF antenna is available in multiple-unit arrays for added gain. Horizontally or vertically parallel kits of 'H' frames can readily be supplied to mount two or four Yagi's with a common feed.



HORIZONTAL POLARIZATION  
VERTICAL STACKING

Region	United States	Europe, Middle East, and Africa	Canada, Caribbean, and Latin America	Asia-Pacific
<b>Telephone</b>	1 800 263 3275	+44 (0) 1487 84 28 19	Canada: 1 800 263 3275 International: +1 905 726 7676	+1 905 727 0165
<b>E-mail</b>	salesusa@sinctech.com	salesuk@sinctech.com	salescan@sinctech.com	salesasia@sinctech.com

### Electrical Specifications

Frequency Range	MHz	157 to 164
Connector		N-Male
Gain (nominal)	dBd (dBi)	12 (14.1)
VSWR (max)		1.5:1
Polarization		vertical or horizontal
Pattern		Directional
Average Input Power (max)	W	300
Front-to-back ratio (Typ)	dB	17
Lightning protection		DC ground

### Notes

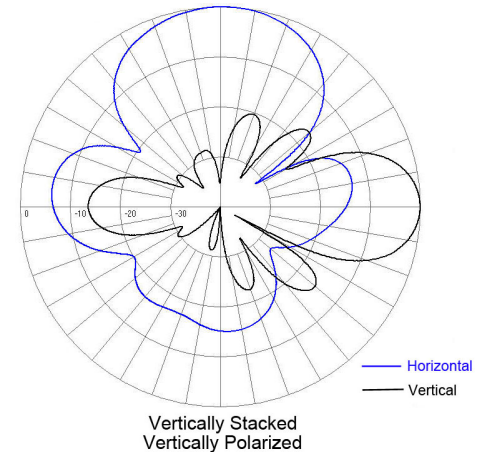
- \*1 : Qty 2 included
- \*2 : 2 antennas per box.

### Mechanical Specifications

Width	in (mm)	5.5 (140)
Length/ Height	in (mm)	76 (1930)
Base pipe diameter	in (mm)	1.5 (38)
Radiating element material		aluminum
Weight	lbs (kg)	22.3 (10.12)
Weight iced (1/2" ice)	lbs (kg)	62.4 (28.33)
Mounting Hardware (Included)		Clamp001 *1
Actual shipping weight	lbs (kg)	34 (15.44)
Shipping dimensions	in (mm)	127x8x7 (3226x203x178) *2

### Environmental Specifications

Temperature range	°F (°C)	-40 to +140 (-40 to +60)
Wind Loading Area (Flat Plate Equivalent)	ft² (m²)	2.71 (0.25)
Wind Loading Area (1/2" ice)	ft² (m²)	5.52 (0.51)
Rated wind velocity (no ice)	mph (km/h)	155 (250)
Rated wind velocity (1/2" radial ice)	mph (km/h)	95 (153)
Lateral Thrust (100 mph No Ice)	lbs (N)	66 (293.6)



Region	United States	Europe, Middle East, and Africa	Canada, Caribbean, and Latin America	Asia-Pacific
Telephone	1 800 263 3275	+44 (0) 1487 84 28 19	Canada: 1 800 263 3275 International: +1 905 726 7676	+1 905 727 0165
E-mail	salesusa@sinctech.com	salesuk@sinctech.com	salescan@sinctech.com	salesasia@sinctech.com