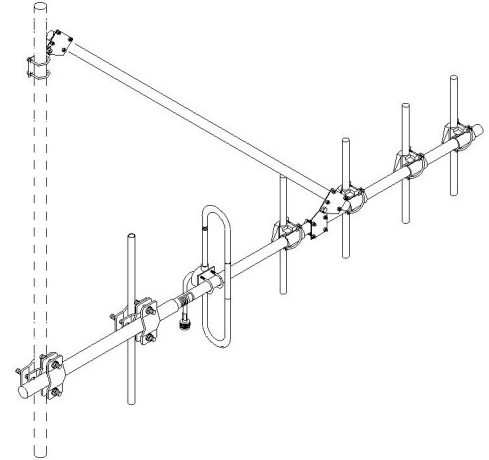


**SY206-HF2SNM(E-MABK)** Yagi directional, 9.5 dBd, extended boom, HD, MABK, 152-159 MHz

- Six element Yagi with extended boom for end mount
- Heavy duty construction for harsh environment
- DC ground potential for lightning protection
- MIL-A-8625F, Type III, Class 2 black anodizing

The SY206(E)-H series of antennas consists of a six-element yagi of outstanding durability and performance. All elements including the folded dipole are maintained at DC Ground potential for lightning protection. All elements on this antenna are attached to the boom with solid cast aluminum clamps.

This highly versatile antenna is supplied with an extended boom for end mounting the antenna.



Mounting pole not supplied

www.sinctech.com

Region	United States	Europe, Middle East and Africa	Caribbean and Latin America	Canada and rest of the world
<b>Telephone</b>	USA: 1 800 263 3275	International: +44 (0) 1487 84 28 19	International: +1 905 726 7676	Canada: 1 800 263 3275 International: +1 905 727 0165
<b>E-mail</b>	salesusa@sinctech.com	salesuk@sinctech.com	salesla@sinctech.com	salescan@sinctech.com

#### Electrical Specifications

Frequency Range	MHz	152 to 159
Bandwidth	MHz	7
Connector		N-Male
Gain (nominal)	dBd (dBi)	9.5 (11.6)
Input VSWR (max)		1.5:1
Polarization		vertical or horizontal
Pattern		Directional
Horizontal beamwidth (Vert. Pol.)	degrees	60
Vertical beamwidth (Vert. Pol.)	degrees	47
Average Power Input (max)	W	250
Lightning protection		DC ground
Front-to-back ratio (typ)	dB	17

#### Notes

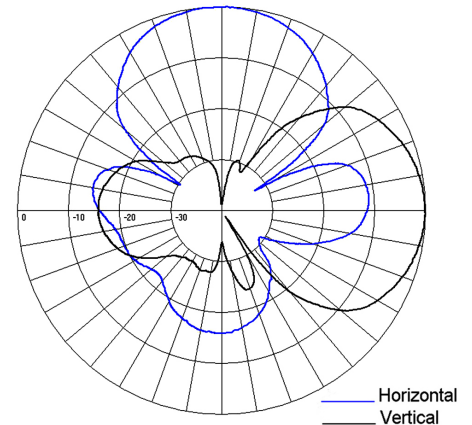
\*1 : Clamp017 Qty. 1, Clamp064 Qty. 2

#### Mechanical Specifications

Width	in (mm)	39.4 (1001)
Length/ Height	in (mm)	106 (2692)
Radiating element material		aluminum
Reflector material		aluminum
Finish		MIL-A-8625F Type III Class 2, black anodizing
Weight	lbs (kg)	18.4 (8.35)
Weight iced (1/2" ice)	lbs (kg)	51.9 (23.56)
Mounting Hardware (Included)		Clamp017 and Clamp064 *1

#### Environmental Specifications

Temperature range	°F (°C)	-40 to +140 (-40 to +60)
Wind Loading Area (Flat Plate Equivalent)	ft <sup>2</sup> (m <sup>2</sup> )	2.2 (0.2)
Wind Loading Area (1/2" ice)	ft <sup>2</sup> (m <sup>2</sup> )	3.9 (0.36)
Rated wind velocity (no ice)	mph (km/h)	140 (225)
Rated wind velocity (1/2" radial ice)	mph (km/h)	100 (161)
Lateral thrust (100 mph No Ice)	lbs (N)	83 (369.2)
Bending moment (100 mph No Ice)	ft-lbs (Nm)	441 (595.4)



Region	United States	Europe, Middle East and Africa	Caribbean and Latin America	Canada and rest of the world
<b>Telephone</b>	USA: 1 800 263 3275	International: +44 (0) 1487 84 28 19	International: +1 905 726 7676	Canada: 1 800 263 3275 International: +1 905 727 0165
<b>E-mail</b>	salesusa@sinctech.com	salesuk@sinctech.com	salesla@sinctech.com	salescan@sinctech.com