

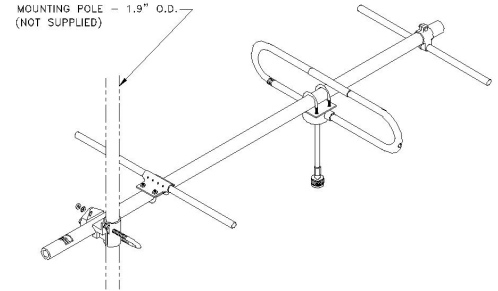
SY203-SF2SNM(E) Yagi directional, 5.5 dBi, extended boom for end mount, 143-149 MHz

- Rugged 3 element yagi, 5.5 dBi gain
- Designed for medium gain applications
- Extended boom for end mounting

The SY203-E series of antennas consist of a 3-element yagi of outstanding durability and performance. All elements including the folded dipole are maintained at DC Ground potential for lightning protection. All elements on this antenna are attached to the boom with solid cast aluminum clamps.

This highly versatile antenna is supplied as an end mount yagi, or the SY203 series can be ordered as a center mount.

As with other yagis, this VHF antenna is available in multiple-unit arrays for added gain.



www.sinclaire.com

Region	United States	Europe, Middle East, and Africa	Canada, Caribbean, and Latin America	Asia-Pacific
Telephone	1 800 263 3275	+44 (0) 1487 84 28 19	Canada: 1 800 263 3275 International: +1 905 726 7676	+1 905 727 0165
E-mail	salesusa@sinclaire.com	salesuk@sinclaire.com	salescan@sinclaire.com	salesasia@sinclaire.com

Electrical Specifications

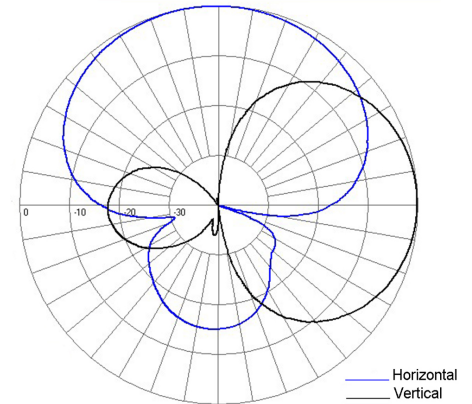
Frequency Range	MHz	143 to 149
Bandwidth	MHz	6
Connector		N-Male
Gain (nominal)	dBd (dBi)	5.5 (7.6)
Input VSWR (max)		1.5:1
Polarization		vertical or horizontal
Impedance	Ω	50
Pattern		Directional
Horizontal beamwidth (typ)	degrees	87
Vertical beamwidth (typ)	degrees	61
Average Input Power (max)	W	200
Front-to-back Ratio	dB	12 to 17
Lightning protection		DC ground

Mechanical Specifications

Width	in (mm)	42 (1067)
Depth	in (mm)	6.5 (165)
Length/ Height	in (mm)	75.3 (1913)
Boom Diameter	in (mm)	1.5 (38)
Weight	lbs (kg)	5.5 (2.5)
Mounting Hardware (Included)		Clamp001
Actual shipping weight	lbs (kg)	10 (4.54)
Shipping dimensions	in (mm)	85x60x6 (2159x1524x152)

Environmental Specifications

Temperature range	°F (°C)	-40 to +140 (-40 to +60)
Wind Loading Area (Flat Plate Equivalent)	ft ² (m ²)	1.05 (0.1)
Wind Loading Area (1/2" ice)	ft ² (m ²)	2.1 (0.2)
Rated wind velocity (no ice)	mph (km/h)	135 (217)
Rated wind velocity (1/2" radial ice)	mph (km/h)	90 (145)
Lateral Thrust (100 mph No Ice)	lbs (N)	38.7 (172.1)
Bending moment (100 mph No Ice)	ft-lbs (Nm)	126 (170.1)



Region	United States	Europe, Middle East, and Africa	Canada, Caribbean, and Latin America	Asia-Pacific
Telephone	1 800 263 3275	+44 (0) 1487 84 28 19	Canada: 1 800 263 3275 International: +1 905 726 7676	+1 905 727 0165
E-mail	salesusa@sinctech.com	salesuk@sinctech.com	salescan@sinctech.com	salesasia@sinctech.com