

SV360-SF1SNM Parabolic reflector directive, 15 dBd, 406-420 MHz

Also referred as: SRL360-1

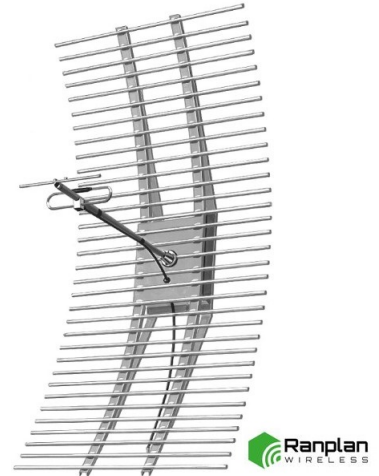
- Highly directive parabolic reflector with welded aluminum rods
- Covers 406-420 MHz frequency range
- Rugged construction
- Suitable for horizontal or vertical polarization

Sinclair's SV360 series of parabolic reflector antennas cover the 335-470 MHz frequency range in 7 different sub-bands with a nominal gain of 15 dBd across the designed bandwidth.

These antennas have a good front-to-back ratio. They are great for point-to-point applications.

Performance is constant throughout the band.

- Each antenna has a rugged design to withstand harsh environmental conditions
- It is a highly directive parabolic antenna consisting of a back-firing dipole reflector assembly for increased gain and directivity
- The mounting hardware supplied will allow for either vertical or horizontal polarization
- DC ground for lightning protection



www.sinctech.com

Region	United States	Europe, Middle East, and Africa	Canada, Caribbean, and Latin America	Asia-Pacific
Telephone	1 800 263 3275	+44 (0) 1487 84 28 19	Canada: 1 800 263 3275 International: +1 905 726 7676	+1 905 727 0165
E-mail	salesusa@sinctech.com	salesuk@sinctech.com	salescan@sinctech.com	salesasia@sinctech.com

Product Specification Sheet
EPR 018354
Customer Tech Manual 006048

SV360-SF1SNM

Issue: 3

Dated: 25-03-21
Dated: 01-10-13

Electrical Specifications

Frequency Range	MHz	406 to 420
Bandwidth	MHz	14
Connector		N-Male
Gain (nominal)	dBd (dBi)	15 (17.1)
Input VSWR (max)		1.5:1
Polarization		vertical or horizontal
Impedance	Ω	50
Pattern		Directional
Horizontal beamwidth (typ)	degrees	32
Vertical beamwidth (typ)	degrees	18
Average Input Power (max)	W	250
Front-to-back ratio (Typ)	dB	25
Lightning protection		DC ground

Mechanical Specifications

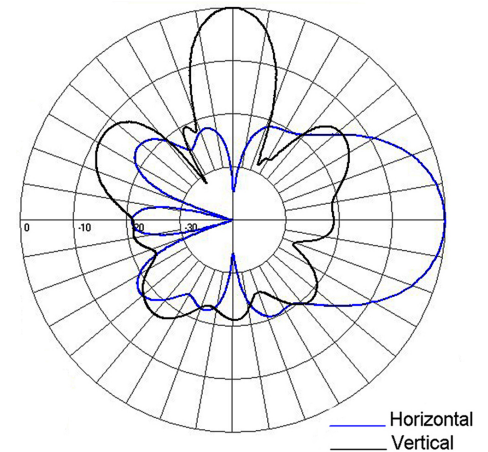
Width	in (mm)	88 (2235)
Depth	in (mm)	25 (635)
Length/ Height	in (mm)	45.8 (1163)
Radiating element material		aluminum
Weight	lbs (kg)	33 (14.98)
Mounting Hardware (Included)		Clamp004
Actual shipping weight	lbs (kg)	43 (19.52)
Shipping dimensions	in (mm)	47x9x43 (1194x229x1092)

Environmental Specifications

Temperature range	°F (°C)	-40 to +140 (-40 to +60)
Rated wind velocity (no ice)	mph (km/h)	100 (161)
Rated wind velocity (1/2" radial ice)	mph (km/h)	85 (137)
Lateral Thrust (100 mph No Ice)	lbs (N)	422 (1877.1) *1

Notes

*1 : Worst case rated wind and ice



Region	United States	Europe, Middle East, and Africa	Canada, Caribbean, and Latin America	Asia-Pacific
Telephone	1 800 263 3275	+44 (0) 1487 84 28 19	Canada: 1 800 263 3275 International: +1 905 726 7676	+1 905 727 0165
E-mail	salesusa@sinctech.com	salesuk@sinctech.com	salescan@sinctech.com	salesasia@sinctech.com