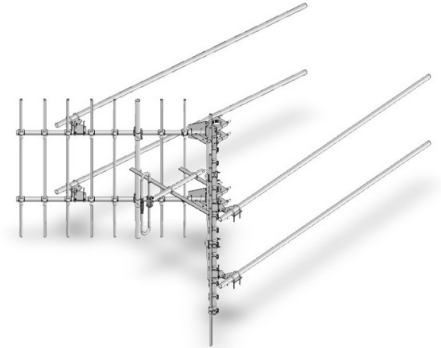


SV228-SF3SNM Corner reflector directive, 10 dBd, 190-225 MHz

- Similar to the SV227 but with larger reflector for higher gain
- Covers entire 190-225 MHz with 1.5:1 VSWR
- 250 Watts power handling
- Standard connector is N-male, N-female also available

The SV228 combines the features of the SV227 with a larger reflector for higher gain (10 dBd) which may be needed in certain system applications. The F3 sub-band covers the entire 190-225 MHz band with 1.5:1 VSWR.

Also available with a N-female connector as SV228-SF3SNF.



www.sincltech.com

Region	United States	Europe, Middle East, and Africa	Canada, Caribbean, and Latin America	Asia-Pacific
Telephone	1 800 263 3275	+44 (0) 1487 84 28 19	Canada: 1 800 263 3275 International: +1 905 726 7676	+1 905 727 0165
E-mail	salesusa@sincltech.com	salesuk@sincltech.com	salescan@sincltech.com	salesasia@sincltech.com

Product Specification Sheet
EPR 018515
Customer Tech Manual 006154

SV228-SF3SNM

Issue: 2

Dated: 25-03-21
Dated: 29-05-17

Electrical Specifications

Frequency Range	MHz	190 to 225	
Connector		N-Male	*1
Gain (nominal)	dBd (dBi)	10 (12.1)	
Input VSWR (max)		1.5:1	
Polarization		vertical or horizontal	
Pattern		Directional	
Horizontal beamwidth (typ)	degrees	50	
Vertical beamwidth (typ)	degrees	66	
Average Input Power (max)	W	250	
Front-to-back ratio (Typ)	dB	30	
Lightning protection		DC ground	

Notes

- *1 : N-female also available
- *2 : Qty 2 per bay

Mechanical Specifications

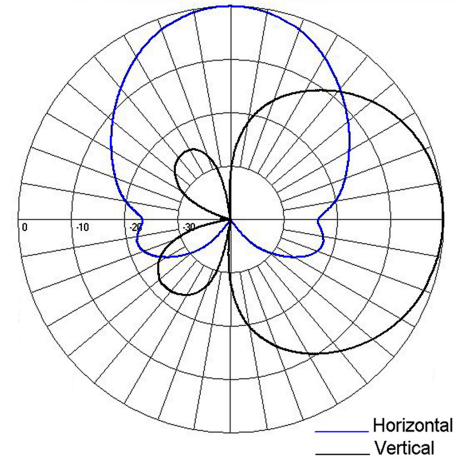
Width	in (mm)	86.44 (2196)	
Depth	in (mm)	43.2 (1097)	
Length/ Height	in (mm)	55.87 (1419)	
Radiating element material		aluminum	
Weight	lbs (kg)	46 (20.88)	
Weight iced (1/2" ice)	lbs (kg)	195 (88.53)	
Mounting Hardware (Included)		Clamp004	*2
Shipping dimensions	in (mm)	108x6x24 (2743x152x610)	

Ordering Information

Heavy duty versions available

Environmental Specifications

Temperature range	°F (°C)	-40 to +140 (-40 to +60)
Wind Loading Area (Flat Plate Equivalent)	ft² (m²)	7.48 (0.69)
Wind Loading Area (1/2" ice)	ft² (m²)	14.99 (1.39)
Rated wind velocity (no ice)	mph (km/h)	155 (250)
Rated wind velocity (1/2" radial ice)	mph (km/h)	125 (201)
Lateral Thrust (100 mph No Ice)	lbs (N)	245 (1089.8)



Region	United States	Europe, Middle East, and Africa	Canada, Caribbean, and Latin America	Asia-Pacific
Telephone	1 800 263 3275	+44 (0) 1487 84 28 19	Canada: 1 800 263 3275 International: +1 905 726 7676	+1 905 727 0165
E-mail	salesusa@sinctech.com	salesuk@sinctech.com	salescan@sinctech.com	salesasia@sinctech.com