

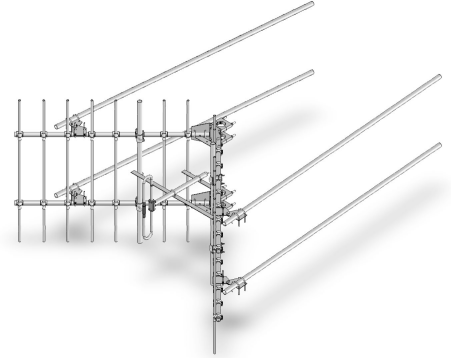
SV228-SF2SNM Corner reflector directive, 10 dBd, 148-174 MHz

Also referred as: SRL228*2

- Similar to the SV227- but with larger reflector for higher gain
- Dual and quad stacked arrays available for gains of 12.5 dBd and 15 dBd respectively
- Higher power and/or heavy-duty models available

The SV228 combines the features of the SV227 with a larger reflector for higher gain which may be needed in certain system applications. Dual and quad stacked arrays are available for gains of 12.5 dBd and 15 dBd respectively. Higher power and/or heavy-duty models are available.

Available with N-female connector as SV228-SF2SNF.



Region	United States	Europe, Middle East and Africa	Caribbean and Latin America	Canada and rest of the world
Telephone	USA: 1 800 263 3275	International: +44 (0) 1487 84 28 19	International: +1 905 726 7676	Canada: 1 800 263 3275 International: +1 905 727 0165
E-mail	salesusa@sinctech.com	salesuk@sinctech.com	salesla@sinctech.com	salescan@sinctech.com

Electrical Specifications

Frequency Range	MHz	148 to 174	
Bandwidth	MHz	26	
Connector		N-Male	*1
Gain (nominal)	dBd (dBi)	10 (12.1)	
Input VSWR (max)		1.5:1	
Polarization		vertical or horizontal	
Pattern		Directional	
Horizontal beamwidth (typ)	degrees	50	
Vertical beamwidth (typ)	degrees	66	
Average Power Input (max)	W	250	
Lightning protection		DC ground	
Front-to-back ratio (typ)	dB	30	

Notes

- *1 : N-female available.
- *2 : Qty 2 per bay

Mechanical Specifications

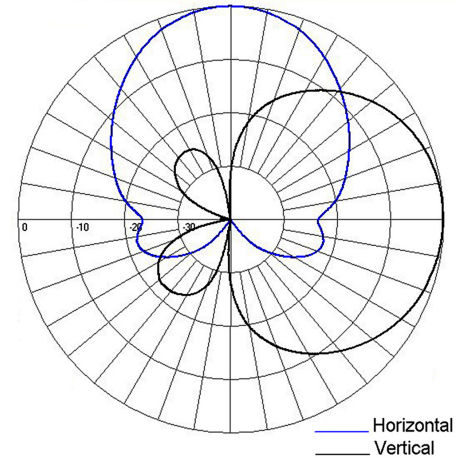
Width	in (mm)	117 (2972)	
Depth	in (mm)	57 (1448)	
Length/ Height	in (mm)	72 (1829)	
Weight	lbs (kg)	84 (38.14)	
Weight iced (1/2" ice)	lbs (kg)	290 (131.66)	
Mounting Hardware (Included)		Clamp004	*2
Actual shipping weight	lbs (kg)	145 (65.83)	
Shipping dimensions	in (mm)	120x6x15 (3048x152x381)	

Environmental Specifications

Temperature range	°F (°C)	-40 to +140 (-40 to +60)
Wind Loading Area (Flat Plate Equivalent)	ft² (m²)	12.1 (1.12)
Wind Loading Area (1/2" ice)	ft² (m²)	22.8 (2.12)
Rated wind velocity (no ice)	mph (km/h)	100 (161)
Rated wind velocity (1/2" radial ice)	mph (km/h)	85 (137)
Lateral Thrust (100 mph No Ice)	lbs (N)	479 (2130.6)

Ordering Information

Heavy duty versions available



Region	United States	Europe, Middle East and Africa	Caribbean and Latin America	Canada and rest of the world
Telephone	USA: 1 800 263 3275	International: +44 (0) 1487 84 28 19	International: +1 905 726 7676	Canada: 1 800 263 3275 International: +1 905 727 0165
E-mail	salesusa@sinctech.com	salesuk@sinctech.com	salesla@sinctech.com	salescan@sinctech.com