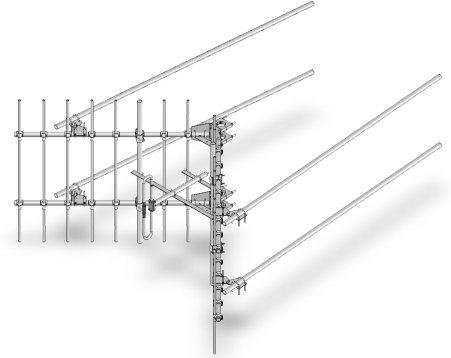


**SV228-SF1SNM** Corner reflector directive, 10 dBd, 130-150 MHz

Also referred as: SRL228\*1

- Similar to the SV227 but with larger reflector for higher gain
- Dual and quad stacked arrays available for gains of 12.5 dBd and 15 dBd respectively
- Higher power and/or heavy-duty models available

The SV228 combines the features of the SV227 with a larger reflector for higher gain which may be needed in certain system applications. Dual and quad stacked arrays are available for gains of 12.5 dBd and 15 dBd respectively. Higher power and/or heavy-duty models are available.



www.sinctech.com

Region	United States	Europe, Middle East and Africa	Caribbean and Latin America	Canada and rest of the world
<b>Telephone</b>	USA: 1 800 263 3275	International: +44 (0) 1487 84 28 19	International: +1 905 726 7676	Canada: 1 800 263 3275 International: +1 905 727 0165
<b>E-mail</b>	salesusa@sinctech.com	salesuk@sinctech.com	salesla@sinctech.com	salescan@sinctech.com

#### Electrical Specifications

Frequency Range	MHz	130 to 150
Connector		N-Male
Gain (nominal)	dBd (dBi)	10 (12.1)
Input VSWR (max)		1.5:1
Polarization		vertical or horizontal
Pattern		Directional
Horizontal beamwidth (typ)	degrees	50
Vertical beamwidth (typ)	degrees	66
Average Power Input (max)	W	250
Lightning protection		DC ground
Front-to-back ratio (typ)	dB	30

#### Notes

\*1 : Qty 2 per bay

#### Mechanical Specifications

Width	in (mm)	136 (3454)
Depth	in (mm)	66 (1676)
Length/ Height	in (mm)	85 (2159)
Weight	lbs (kg)	103 (46.76)
Weight iced (1/2" ice)	lbs (kg)	330.3 (149.96)
Mounting Hardware (Included)		Clamp004 *1
Actual shipping weight	lbs (kg)	166 (75.36)
Shipping dimensions	in (mm)	120x6x15 (3048x152x381)

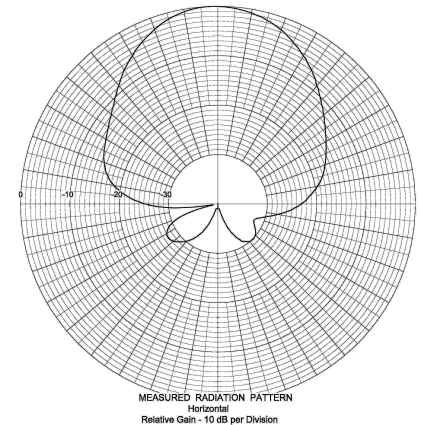
#### Ordering Information

Heavy duty versions available

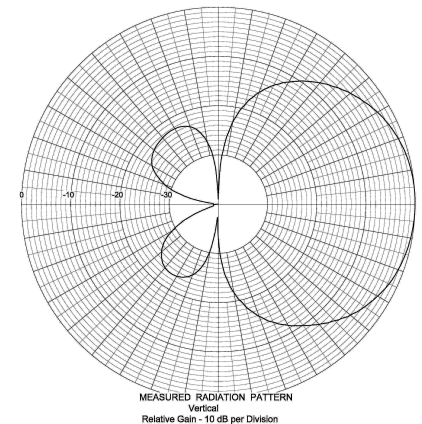
#### Environmental Specifications

Temperature range	°F (°C)	-40 to +140 (-40 to +60)
Wind Loading Area (Flat Plate Equivalent)	ft² (m²)	12.66 (1.18)
Wind Loading Area (1/2" ice)	ft² (m²)	23.5 (2.18)
Rated wind velocity (no ice)	mph (km/h)	135 (217)
Rated wind velocity (1/2" radial ice)	mph (km/h)	100 (161)
Lateral thrust (100 mph No Ice)	lbs (N)	490 (2179.5)

#### SINCLAIR TECHNOLOGIES



#### SINCLAIR TECHNOLOGIES



Region	United States	Europe, Middle East and Africa	Caribbean and Latin America	Canada and rest of the world
Telephone	USA: 1 800 263 3275	International: +44 (0) 1487 84 28 19	International: +1 905 726 7676	Canada: 1 800 263 3275 International: +1 905 727 0165
E-mail	salesusa@sinctech.com	salesuk@sinctech.com	salesla@sinctech.com	salescan@sinctech.com