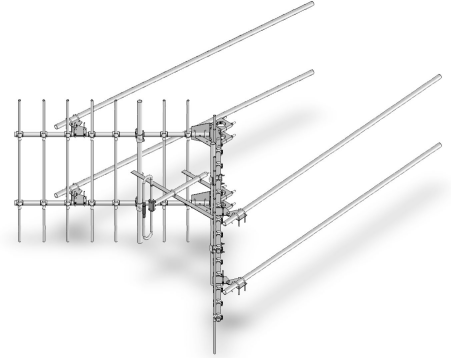


**SV228-HF2SNM** Corner reflector directive, 10 dBd, 148-174 MHz

- Also referred as: SRL228\*2
- Similar to the SV227- but with larger reflector for higher gain
  - Dual and quad stacked arrays available for gains of 12.5 dBd and 15 dBd respectively

The SV228 combines the features of the SV227 with a larger reflector for higher gain which may be needed in certain system applications. Dual and quad stacked arrays are available for gains of 12.5 dBd and 15 dBd respectively. Higher power and/or heavy-duty models are available.



www.sinctech.com

| Region           | United States         | Europe, Middle East and Africa       | Caribbean and Latin America    | Canada and rest of the world                             |
|------------------|-----------------------|--------------------------------------|--------------------------------|--|
| <b>Telephone</b> | USA: 1 800 263 3275   | International: +44 (0) 1487 84 28 19 | International: +1 905 726 7676 | Canada: 1 800 263 3275<br>International: +1 905 727 0165 |
| <b>E-mail</b>    | salesusa@sinctech.com | salesuk@sinctech.com                 | salesla@sinctech.com           | salescan@sinctech.com                                    |

### Electrical Specifications

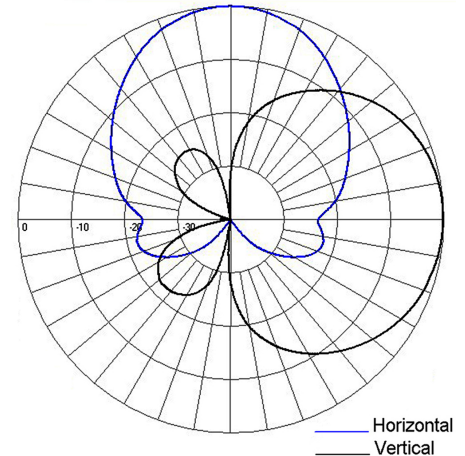
|                            |           |                        |
|----------------------------|-----------|------------------------|
| Frequency Range            | MHz       | 148 to 174             |
| Connector                  |           | N-Male                 |
| Gain (nominal)             | dBd (dBi) | 10 (12.1)              |
| Input VSWR (max)           |           | 1.5:1                  |
| Polarization               |           | vertical or horizontal |
| Impedance                  | Ω         | 50                     |
| Pattern                    |           | Directional            |
| Horizontal beamwidth (typ) | degrees   | 50                     |
| Vertical beamwidth (typ)   | degrees   | 66                     |
| Average Power Input (max)  | W         | 250                    |
| Lightning protection       |           | DC ground              |
| Front-to-back ratio (typ)  | dB        | 30                     |

### Mechanical Specifications

|                              |          |                        |
|------------------------------|----------|------------------------|
| Width                        | in (mm)  | 116 (2946)             |
| Depth                        | in (mm)  | 62 (1575)              |
| Length/ Height               | in (mm)  | 72 (1829)              |
| Radiating element material   |          | aluminum               |
| Weight                       | lbs (kg) | 93 (42.22)             |
| Weight iced (1/2" ice)       | lbs (kg) | 294 (133.48)           |
| Mounting Hardware (Included) |          | Clamp004               |
| Shipping dimensions          | in (mm)  | 96x6x24 (2438x152x610) |
| Mounting hardware            |          | #4 clamp               |

### Environmental Specifications

|   |                                   |                          |
|---|-----------------------------------|--------------------------|
| Temperature range                         | °F (°C)                           | -40 to +140 (-40 to +60) |
| Wind Loading Area (Flat Plate Equivalent) | ft <sup>2</sup> (m <sup>2</sup> ) | 10.37 (0.96)             |
| Wind Loading Area (1/2" ice)              | ft <sup>2</sup> (m <sup>2</sup> ) | 18.98 (1.76)             |
| Rated wind velocity (no ice)              | mph (km/h)                        | 195 (314)                |
| Rated wind velocity (1/2" radial ice)     | mph (km/h)                        | 155 (250)                |
| Lateral thrust (100 mph No Ice)           | lbs (N)                           | 403 (1792.5)             |



| Region           | United States         | Europe, Middle East and Africa       | Caribbean and Latin America    | Canada and rest of the world                             |
|------------------|-----------------------|--------------------------------------|--------------------------------|--|
| <b>Telephone</b> | USA: 1 800 263 3275   | International: +44 (0) 1487 84 28 19 | International: +1 905 726 7676 | Canada: 1 800 263 3275<br>International: +1 905 727 0165 |
| <b>E-mail</b>    | salesusa@sinctech.com | salesuk@sinctech.com                 | salesla@sinctech.com           | salescan@sinctech.com                                    |